

**Cheshire East
Health and Wellbeing Board
Pharmaceutical Needs Assessment
2015**

Contents

1.0	Purpose of the Pharmaceutical Needs Assessment	3
2.0	Structure of the Cheshire East Pharmaceutical Needs Assessment	3
3.0	Pharmaceutical Lists and Market Entry	4
4.0	Essential Small Pharmacies	5
5.0	Ownership of Community Pharmacies	5
6.0	Definition of Pharmaceutical Services	5
7.0	Essential Services	7
8.0	Advanced Services	8
9.0	Services Commissioned by Cheshire East Council	11
10.0	Services Commissioned by South Cheshire CCG and Eastern Cheshire CCG	13
11.0	Services Commissioned by Cheshire, Warrington and Wirral Area Team	14
12.0	Dispensing Appliance Contractors	15
13.0	Distance Selling Pharmacies	15
14.0	Dispensing Doctors	15
15.0	Community Pharmacy Provision in Cheshire East	16
16.0	Community Pharmacy Opening Hours	20
17.0	Prescription Items and Prescription Costs	23
18.0	Community Pharmacy Access	24
19.0	Prescription Collection and Delivery Services	25
20.0	Factors Affecting Prescribing	26
21.0	Population Structure and Growth	26
22.0	Ethnicity and Other Protected Characteristics	29
23.0	Deprivation	31
24.0	Premature Mortality	33
25.0	Chronic Disease	33
26.0	The Top 20 Drugs used in Cheshire East, by Number of Items and Cost	34
27.0	The Cheshire East Health and Wellbeing Strategy	36
28.0	The Six Statements required by Legislation	37
28.1	Pharmaceutical Services provided in the area of the HWB	
28.2	Pharmaceutical Services that need to be provided to meet need	
28.3	Pharmaceutical Services that have secured improvements or better access	
28.4	Pharmaceutical Services that are not provided but would, if they were provided, secure improvements or better access to services	
28.5	NHS Services to which the HWB has had regard in its assessment	
28.6	An explanation of how the Assessment has been carried out	
29.0	A map identifying Premises at which Pharmaceutical Services are provided	42

Appendices **43**

- Seven LAP “profiles”, each containing a map identifying the locations of community pharmacies, the names and addresses of all community pharmacies and their opening hours, a summary of the services that they provide, and the responses obtained for that LAP area from the Public Survey
- Glossary of Terms and Phrases defined in regulation 2 of the 2013 Regulations

1.0 Purpose of the Pharmaceutical Needs Assessment

1.1 Under the Health Act 2009, NHS Primary Care Trusts (PCTs) prepared Pharmaceutical Needs Assessments (PNAs) and used these as the basis for determining market entry to NHS pharmaceutical provision. The Health and Social Care Act 2012 established Health and Wellbeing Boards (HWBs) and transferred the responsibility to develop and update PNAs from PCTs to HWBs. The responsibility for using PNAs as the basis for determining market entry to a pharmaceutical list transferred from PCTs to NHS England from 1 April 2013.

1.2 The NHS (Pharmaceutical Services and Local Pharmaceutical Services) Regulations 2013 came into force on 1 April 2013. These require HWBs to produce their first assessment of needs for pharmaceutical services in their area by 1 April 2015 and to publish a revised assessment within three years of publication of their first assessment (or as soon as is reasonably practical after identifying significant changes to the availability of pharmaceutical services).

1.3 The statutory requirements for PNAs are set out in Regulations 3 to 9 and Schedule 1 of the NHS (Pharmaceutical Services and Local Pharmaceutical Services) Regulations 2013. This Pharmaceutical Needs Assessment is written in accordance with these Regulations. The PNA also takes account of the Joint Strategic Needs Assessment (JSNA).

1.4 The PNA is of particular importance to NHS England who, since 1 April 2013, has been identified in the Health and Social Care Act 2012 as responsible for maintaining pharmaceutical lists. The PNA is a key document in making decisions with regard to applications made under the NHS (Pharmaceutical Services and Local Pharmaceutical Services) Regulations 2013. Under the revised market entry arrangements, routine applications are assessed against the PNA.

1.5 In addition to being used as a basis for determining market entry, PNAs are intended to be used to inform commissioning decisions by NHS England, by Local Authorities (public health services from community pharmacies), and by Clinical Commissioning Groups.

1.6 The PNA was consulted upon for 60 days between 19th November 2014 and 19th January 2015 with those as specified in the Regulations. A total of 8 completed responses were received and have been incorporated into this final version.

2.0 Structure of the Cheshire East Pharmaceutical Needs Assessment

2.1 This Pharmaceutical Needs Assessment for Cheshire East contains 27 introductory sections. These are followed by the six statements required by the legislation, and a map identifying the premises at which pharmaceutical services are provided in the area of the HWB. The appendices contain:

- seven LAP “profiles”, each containing a map identifying the locations of community pharmacies, names and addresses of all community pharmacies and their opening hours, a summary of the services that they provide, and responses from the Public Survey
- a glossary of terms and phrases defined in regulation 2 of the 2013 Regulations

3.0 Pharmaceutical Lists and Market Entry

3.1 The following individuals may apply to be included in a pharmaceutical list:

- community pharmacy contractors, who are healthcare professionals who practice in pharmacy, the field of health sciences focusing on safe and effective medicines use
- appliance contractors, who supply appliances on prescription such as incontinence and stoma aids, trusses, surgical stockings and dressings. They cannot supply medicines. However, community pharmacists and dispensing doctors can also supply appliances
- dispensing doctors, who are medical practitioners authorised to provide drugs and appliances in designated rural areas known as “controlled localities” to those patients who have difficulty accessing a community pharmacy service

3.2 Under the NHS (Pharmaceutical Services) Regulations 2005 and up to the 1st September 2012, four categories of pharmacy applications were exempted from the “control of entry” test. Existing pharmacies that opened under the 2005 exemption categories will still be expected to meet the conditions of the category under which the application was granted, and this will be monitored by NHS England. These categories were:

- pharmacies based in approved retail areas (large retail shopping areas of 15,000 square metres or more leasehold gross floor space away from town centres). There is one of these pharmacies in Cheshire East – in the Handforth Dean shopping centre
- pharmacies that intend to open for at least 100 hours per week. There are eleven of these pharmacies in Cheshire East – three in Congleton, three in Crewe, three in Macclesfield, one in Knutsford, and one in Nantwich
- consortia establishing new one stop primary centres. There are none of these pharmacies in Cheshire East
- wholly mail order or internet-based (distance-selling) pharmacy services. There are three of these pharmacies in Cheshire East

3.3 If a person wants to provide NHS pharmaceutical services, they must apply to be included on the pharmaceutical list by proving they are able to meet a pharmaceutical need as set out in the PNA. Under the NHS (Pharmaceutical Services) Regulations 2012, control of entry is determined by a market entry test, with the only exemption being for distance selling (wholly mail order or internet-based) pharmacy services. This is known as the NHS “market entry” system. Under the market entry test, NHS England assesses an application that offers to:

- meet an identified current or future need or needs
- meet identified current or future improvements or better access to pharmaceutical services
- provide unforeseen benefits. These are applications that offer to meet a need that is not identified in a PNA but which NHS England is satisfied would lead to significant benefits to people living in the area

3.4 The market entry test applies equally to urban and rural areas. However, where NHS England has determined that an area is “controlled” (generally rural in character); doctors as well as pharmacy contractors can dispense NHS medicines under very specific circumstances.

General Practitioners (GPs) may dispense NHS prescriptions only with NHS England approval and only to their own patients who live in such controlled localities and who live more than 1.6 km (as the crow flies) from a pharmacy. This is to ensure that patients in rural areas who might have difficulty reaching their nearest pharmacy can access the medicines they need.

3.5 Generally, when a pharmacy application is granted in a controlled area, any GPs within 1.6 km of the pharmacy have to cease dispensing. The exception to this is where the patient population is under 2,750 ("reserved location"). Where this is approved, both dispensing by doctors and pharmaceutical contractor services can be provided.

3.6 One of the objectives of the current regulatory framework is to improve access by patients to community pharmacies and to ensure access in deprived areas.

4.0 Essential Small Pharmacies

4.1 One of the community pharmacies in Cheshire East is in the Essential Small Pharmacies Local Pharmaceutical Services (ESPLPS) scheme. Essential Small Pharmacies are contracted under the Local Pharmaceutical Services (LPS) provisions. The Pharmaceutical Services Negotiating Committee (PNSC) and the Department of Health agreed as part of the contract negotiations in 2004-05 that LPS contracting would be used to provide support to existing Essential Small Pharmaceutical Services (ESPS) pharmacies. The Essential Small Pharmacies were all transferred to an Essential Small Pharmacy contract from October 2006. Originally scheduled to end in 2011, PNSC secured two extensions to the scheme, and the contracts have now been amended to end in March 2015.

5.0 Ownership of Community Pharmacies

5.1 Under the Medicines Act 1968, a registered pharmacist must be in charge of each community pharmacy. Community pharmacies can be owned by a pharmacist sole trader, a limited liability partnership (where all partners are pharmacists) or bodies corporate (where a superintendent pharmacist must be appointed). These are collectively known as pharmacy contractors. Conventionally, pharmacy contractors who own six or more pharmacies are known as "multiple contractors" (also known as pharmacy chains), and those who own fewer than six pharmacies are known as "independents".

5.2 A patient survey undertaken by the Department of Health in 2007 indicated that the public value a variety of types of pharmacy. In 2012/13, 23% of pharmacies in Central and Eastern Cheshire PCT were classified as independent and 77% were owned by multiple contractors (England 38.6% and 61.4%). In 2012/13, Somerset PCT recorded the highest figure for multiple contractors at 88.2 per cent and Islington PCT the lowest at 17.8 per cent.

6.0 Definition of Pharmaceutical Services

6.1 The NHS Act 2006 sets out the definition for pharmaceutical services. Pharmaceutical services are generally provided by virtue of Part 7 of the Act. Under section 126(1) – (3), NHS England is required to secure, on the basis of Regulations made by the Secretary of State, the provision of services to people in their area of medicines and listed appliances and "such other

services as may be prescribed" (section 126(3)(e)). Prescribed services must be set out in Regulations. Therefore, these prescribed services, and the dispensing services referred to in section 126(3)(a) to (d), constitute the core "essential" NHS pharmaceutical services. Section 127 also provides for "additional pharmaceutical services" to be set out in Directions to NHS England. Directed services include advanced and enhanced services for pharmacy contractors and advanced services for dispensing appliance contractors.

6.2 The Community Pharmacy Contractual Framework was introduced in 2005. Under the framework, there are three types of service which can be provided by community pharmacy and/or appliance contractors. Pharmaceutical services in relation to PNAs therefore include:

- "essential services" which every community pharmacy providing NHS pharmaceutical services must provide. These are the dispensing of medicines, promotion of healthy lifestyles, and support for self-care including appropriate signposting
- "advanced services" currently comprise four services. The first to be introduced was Medicines Use Reviews which community pharmacies can provide if they are providing all the essential services and have suitable training and accredited premises. In April 2010 a further two advanced services were introduced for both community pharmacy and appliance contractors. These are Appliance Use Reviews and Stoma Customisation Service. In October 2011 the fourth advanced service was introduced for community pharmacies, the New Medicines Service
- locally commissioned services (previously known as "enhanced services") that are commissioned by NHS England. The Cheshire, Warrington and Wirral Area Team of NHS England commissioned a seasonal flu vaccination service from community pharmacies during the 2014/15 flu season. (See also paragraph 11.1)

6.3 Prior to April 2013, each PCT was authorised to arrange for the provision of specific pharmaceutical services to persons within or outside its area with pharmacists included on its pharmaceutical list or on the list of a neighbouring PCT. In 2012-13 there were twenty specified services nationally although only six were commissioned by Central and Eastern Cheshire PCT. The table shows the proportion of community pharmacies providing these services in 2012-13.

	England	North West	CECPCT
Stop Smoking	20.2%	51.2%	47.5%
Supervised Administration	18.8%	46.5%	67.3%
Minor Ailment Service	12.1%	52.5%	100%
Patient Group Direction	11.7%	42.0%	100%
Medication Review	9.2%	20.8%	93.1%
Needle and Syringe Exchange	7.4%	19.9%	24.8%

6.4 From April 2013, pharmaceutical services **do not include** any services commissioned from pharmaceutical contractors by Local Authorities and Clinical Commissioning Groups.

7.0 Essential Services

7.1 Dispensing Medicines or Appliances. Pharmacies are required to maintain a record of all medicines dispensed, and also to keep records of any interventions made which they judge to be significant. Whilst the terms of service requires a pharmacist to dispense any (non-blacklisted) medicine 'with reasonable promptness', for appliances the obligation to dispense arises only if the pharmacist supplies such products 'in the normal course of his business'. The Electronic Prescription Service (EPS) is also being implemented as part of the dispensing service. Prescription-linked interventions can be identified during the dispensing process. Pharmacists could identify patients with specified health needs which should be addressed. The health needs that the HWB wish to be targeted could be agreed with the Cheshire, Warrington and Wirral Area Team of NHS England and the Local Pharmaceutical Committee (LPC).

7.2 Repeat Dispensing. Pharmacies will dispense repeat prescriptions and store the documentation if required by the patient. They will ensure that each repeat supply is required and seek to ascertain that there is no reason why the patient should be referred back to their General Practitioner (GP). This service is aimed at patients with long term conditions who have a stable medication routine and hence may have less opportunity to discuss any health issues with their GP or nurse. Pharmacists are required to check if a patient is using their medication. This gives them an opportunity to identify if a patient is not using their medication as intended and hence may not be getting the desired health outcomes for which they were prescribed.

7.3 Disposal of Unwanted Medicines. Pharmacies are obliged to accept back unwanted medicines from patients. The pharmacy will, if required by NHS England or the waste contractor, sort them into solids (including ampoules and vials), liquids and aerosols, and the Cheshire, Warrington and Wirral Area Team will make arrangements for a waste contractor to collect the medicines from pharmacies at regular intervals. Additional segregation is also required under the Hazardous Waste Regulations. Pharmacy staff have the opportunity to identify patients who have not taken the medicines they were prescribed. This can initiate a discussion and problems such as side effects or dosage regimes can be addressed to help improve the patients' health outcomes. A significant amount of wasted NHS resource is attributed to medications being used incorrectly or not at all.

7.4 Public Health Campaigns and Promotion of Healthy Lifestyles. Each year pharmacies are required to participate in up to six public health campaigns at the request of the Cheshire, Warrington and Wirral Area Team. A number of these campaigns will be agreed nationally and a number will be local campaigns across the geography of Cheshire, Warrington and Wirral and agreed by Directors of Public Health. These campaigns involve the display and distribution of leaflets provided by NHS England. In addition, pharmacies are required to promote healthy lifestyles and undertake prescription-linked interventions on major areas of public health concern, such as encouraging smoking cessation.

7.5 Signposting. The Cheshire, Warrington and Wirral Area Team will provide pharmacies with lists of sources of care and support in the area. Pharmacies will be expected to help people who ask for assistance by directing them to the most appropriate source of help.

7.6 Support for Self Care. Pharmacies will help to manage minor ailments and common conditions, by the provision of advice and where appropriate, the sale of medicines, including dealing with referrals from NHS Direct/NHS 111. Records will be kept where the pharmacist considers it relevant to the care of the patient.

7.7 Clinical Governance. The clinical governance requirements of the community pharmacy contractual framework cover a range of quality related issues.

8.0 Advanced Services

8.1 Medicines Use Review and Prescription Intervention Service (MUR)

8.1.1 The Medicines Use Review and Prescription Intervention Service is an advanced service provided under the community pharmacy contractual framework. MURs can only be provided by pharmacies. The service includes MURs undertaken periodically or when there is a need to make an adherence-focused intervention due to a problem that is identified while providing the dispensing service (a prescription intervention MUR). The purpose of the MUR service is to improve patient knowledge, adherence and use of their medicines by:

- establishing the patients actual use, understanding and experience of taking medicines
- identifying, discussing and resolving poor or ineffective use of medicines
- identifying side effects and drug interactions that may affect adherence
- improving the clinical and cost effectiveness of prescribed medicines and reducing medicine wastage

8.1.2 The following four national target groups for MURs are:

- patients taking the following high risk medicines: non-steroidal anti-inflammatory drugs, anticoagulants including low molecular weight heparin, antiplatelets and diuretics
- patients recently discharged from hospital who had changes made to their medicines while they were in hospital. Ideally patients discharged from hospital will receive an MUR within four weeks of discharge but in certain circumstances the MUR can take place within eight weeks of discharge
- patients with respiratory disease taking the following medicines for asthma or COPD: adrenoreceptor agonists, antimuscarinic bronchodilators, theophylline, compound bronchodilator preparations, corticosteroids, cromoglycate and related therapy, leukotriene receptor antagonists and phosphodiesterase type-4 inhibitors
- patients at risk of, or diagnosed with, cardiovascular disease and regularly being prescribed at least four medicines for any of the following conditions: coronary artery disease, diabetes, atrial fibrillation, peripheral artery disease, chronic kidney disease, hypertension, thyroid disease, heart failure, stroke/transient ischaemic attack, lipid disease

8.1.3 The service is nationally available to a national service specification, but is established locally between the Cheshire, Warrington and Wirral Area Team of NHS England and community pharmacies. A fee per MUR is payable to all pharmacy contractors that choose to provide the services and meet the requirements for this service. The maximum any contractor can be paid

for under the advanced service is 400 MURs a year and at least 70% of all MURs undertaken by each pharmacy in each year should be on patients within the national target groups.

8.1.4 In 2012-13, a total of 19,957 MURs were carried out in Cheshire East, representing an average of 273 in each community pharmacy providing the service compared to an average of 246 in the North West and 267 in England.

8.2 Appliance Use Review (AUR)

8.2.1 Appliance Use Review (AUR) is the second advanced service and was introduced into the NHS community pharmacy contract on 1 April 2010. This service can be provided by either community pharmacy or appliance contractors and can be carried out by a pharmacist or a specialist nurse either at the contractor's premises or at the patient's home.

8.2.2 The service has a national service specification, but was established locally between Primary Care Trusts and their pharmacy contractors. A fee is payable to all community pharmacy and appliance contractors for each AUR they have carried out. There is a different fee depending on whether the AUR was carried out in the patient's home or on the contractor's premises. The maximum number of AURs for which a contractor is eligible to be paid for under this service is not more 1/35th of the aggregate number of specified appliances dispensed by the contractor during the financial year.

8.2.3 AURs should improve the patient's knowledge and use of any specified appliance by:

- establishing the way the patient uses the appliance and the patient's experience of such use
- identifying, discussing and assisting in the resolution of poor or ineffective use of the appliance by the patient
- advising the patient on the safe and appropriate storage of the appliance
- advising the patient on the safe and proper disposal of the appliances that are used or unwanted

8.2.4 Only one community pharmacy in Cheshire East provides this service. In 2012-13 a total of 13 AURs were carried out, representing an average of 13 in each community pharmacy providing the service compared to an average of 115 in the North West and 197 in England. During 2013-14 no activity was recorded. The number of Cheshire East patients who access the service in other areas is not known.

8.3 Stoma Appliance Customisation (SAC)

8.3.1 Stoma Appliance Customisation (SAC) is the third advanced service in the NHS community pharmacy contract and was also introduced on 1 April 2010. The service involves the customisation of a quantity of more than one stoma appliance, based on the patient's measurements or a template. The aim of the service is to ensure proper use and comfortable fitting of the stoma appliance and to improve the duration of usage, thereby reducing waste. This service can be provided by either pharmacy or appliance contractors.

8.3.2 In 2012/13 a total of 14 (17.7%) contractors provided a SAC service in Cheshire East compared to an average of 17.1% of contractors in the North West and 15.2% in England. Across the council a total of 185 SACs were carried out, an average of 13 SACs per contractor compared to an average of 497 in the North West and 635 in England. Although there is cross-boundary activity, the number of Cheshire East patients accessing this service in other areas is unknown.

8.4 New Medicines Service (NMS)

8.4.1 The New Medicines Service (NMS) is the latest advanced service to be introduced in the NHS community pharmacy contract and was introduced on 1 October 2011. This service can be provided by pharmacies only. The NMS was originally implemented as a time-limited service but is now an ongoing service within the Community Pharmacy Contract.

8.4.2 The New Medicines Service aims to:

- help patients and carers manage newly prescribed medicines for a long-term condition (LTC) and make shared decisions about their LTC
- recognise the important and expanding role of pharmacists in optimising the use of medicines
- increase patient adherence to treatment and consequently reduce medicines wastage and contribute to the NHS Quality, Innovation, Productivity and Prevention agenda
- supplement and reinforce information provided by the GP and practice staff to help patients make informed choices about their care
- promote multidisciplinary working with the patient's GP practice
- link the use of newly-prescribed medicines to lifestyle changes or other non-drug interventions to promote well-being and promote health in people with LTCs
- promote and support self-management of LTCs, and increase access to advice to improve medicines adherence and knowledge of potential side effects
- support integration with LTC services from other healthcare providers and provide appropriate signposting and referral to these services
- improve pharmacovigilance, and
- through increased adherence to treatment, reduce medicines-related hospital admissions and improve quality of life for patients

8.4.3 In 2012-13, the New Medicines Service was provided by 64 (81%) of the community pharmacies in Cheshire East. A total of 3,968 NMSs were carried out, representing an average of 62 in each community pharmacy providing the service compared to an average of 63 in the North West and 68 in England.

8.4.4 The NMS is focused on the following patient groups and conditions. For each, a list of medicines has been agreed. If a patient is newly prescribed one of these medicines for these conditions, they will be eligible to receive the service:

- asthma and chronic obstructive pulmonary disease
- type 2 diabetes
- antiplatelet/anticoagulant therapy (mainly but not exclusively used for atrial fibrillation)
- hypertension

CHESHIRE EAST PHARMACEUTICAL NEEDS ASSESSMENT 2015

8.4.5 It is estimated that in Cheshire East each year:

- 1,446 patients will be diagnosed with asthma or chronic obstructive pulmonary disease
- 870 patients will be diagnosed with type 2 diabetes
- 720 patients will be diagnosed with atrial fibrillation
- 2,588 patients will develop hypertension although most will not be diagnosed

8.4.6 There is no routine information available about the use of NMSs for each condition, so it is not currently possible to estimate the proportion of new patients in Cheshire East who receive this service. However, the current overall volume of service is likely to be sufficient to meet need, providing the use of this service is appropriately targeted.

9.0 Services Commissioned by Cheshire East Council

9.1 Under the Health and Social Care Act 2012 the responsibility for commissioning certain services now sits with public health in Local Authorities. In Cheshire East these services are supervised consumption and needle exchange (through a sub-commissioning arrangement), stop smoking and emergency hormonal contraception. Except for stop smoking (which has increased), the proportion of pharmacies that provide these services has not changed significantly since the transfer of commissioning responsibility.

9.2 The table illustrates the number and proportion of community pharmacies that provide these services, by Local Area Partnership and by CCG area. There is a consistent level of service provision across both CCG areas, and all four services are available in every LAP area.

Area	Community Pharmacies	Supervised Consumption	Needle Exchange	Stop Smoking	Emergency Hormonal Contraception (EHC)
Congleton LAP	22	16	6	13	17
Crewe LAP	16	13	3	13	14
Knutsford LAP	6	3	1	1	3
Macclesfield LAP	13	10	7	11	12
Nantwich LAP	7	3	1	2	6
Poynton LAP	4	3	3	2	1
Wilmslow LAP	11	6	3	3	6
NHS Eastern Cheshire CCG	47	32 (68%)	17 (36%)	23 (49%)	34 (72%)
NHS South Cheshire CCG	32	22 (69%)	7 (22%)	22 (69%)	25 (78%)
Cheshire East	79	54 (68%)	24 (30%)	45 (57%)	59 (75%)

Source: Pharmacies who have returned contracts for the above services as at 7th October 2014

9.3 **Supervised Consumption.** This service provides supervised consumption of prescribed opiate maintenance treatment (Methadone or Buprenorphine) at the point of dispensing in the pharmacy, ensuring that the dose has been consumed by the patient. Clients are also given support and advice, including referral to primary care or specialist centres where appropriate.

9.4 Pharmacy Based Needle Exchange. This service aims to assist clients to remain healthy until they are ready to cease injecting and achieve a drug-free life with appropriate support. The service also aims to reduce the rate of blood-borne infections and drug related deaths among service users by:

- reducing the amount of sharing and other high risk injecting behaviours
- providing sterile injecting equipment and other support
- promoting safer injecting practices
- providing and reinforcing harm reduction messages including safe sex advice and advice on overdose preventions (e.g. risks of poly-drug use and alcohol use)
- improving the health of local communities by preventing the spread of blood borne infection and ensuring the safe disposal of used injecting equipment

9.5 In total, 56 pharmacies provide supervised consumption and/or needle exchange services to drug users, 34 pharmacies providing one of these services and 22 providing both services. The Nantwich LAP has the lowest proportion of pharmacies providing drug services, although three pharmacies do provide supervised consumption. There is a good provision of pharmacy-based drug services across the Cheshire East area, and the number of pharmacies providing these services will serve the numbers and rates of drug clients in each LAP area.

Community Pharmacies providing services to drug clients, and number and rate of drug clients in December 2013						
	Community pharmacies	Supervised consumption	Needle exchange	% providing drug services	Drug clients at 31/12/2013	Rate per 10,000 pop
Congleton LAP	22	16	6	73%	176	19.1
Crewe LAP	16	13	3	81%	195	22.7
Knutsford LAP	6	3	1	50%	31	12.3
Macclesfield LAP	13	10	7	77%	237	34.1
Nantwich LAP	7	3	1	43%	37	10.2
Poynton LAP	4	3	3	75%	7	3.1
Wilmslow LAP	11	6	3	55%	59	15.3
Cheshire East	79	54 (68%)	24 (30%)	56 (71%)	741	21.1
Drug clients in active treatment known to the National Drug Treatment Monitoring System (excludes 41 clients with no LAP code)						

9.6 Stop Smoking. This service improves access to stop smoking services by establishing a one to one stop smoking service in community pharmacies, with Nicotine Replacement Therapy (NRT) dispensing and stop smoking consultation. The service aims to improve the health of the local population by supporting as many quitters as possible to the four week quit target, especially through the targeting of smokers living in deprived areas.

9.7 Emergency Hormonal Contraception. This service involves the supply of Levonorgestrel or Ulipristal Acetate emergency hormonal contraception when appropriate to clients in line with the requirements of the Patient Group Direction (PGD). Under 16s must be competent to consent to the treatment. The service constitutes a particularly important component of the total contraceptive and sexual health service provision and is essential in order to support the service already provided by other Contraception and Sexual Health (CaSH) clinics. The service also helps to support the reduction of teenage pregnancy.

9.8 If a pharmacist has religious objections they do not need to provide the service but should signpost a patient to another pharmacy or family planning clinic.

CHESHIRE EAST PHARMACEUTICAL NEEDS ASSESSMENT 2015

9.9 Emergency hormonal contraception is available from 75% of community pharmacies in Cheshire East, although this proportion is lower in the Poynton, Knutsford and Wilmslow LAPs. The lowest level of provision is in the Poynton LAP, where only one of the four pharmacies provides this service. Although women in the Poynton LAP have the lowest rate of use of emergency hormonal contraception (18 courses per 1,000 women aged 15-44 in 2013/14), the fact that they are obtaining this medicine from their general practice in 63% of cases indicates that access to emergency hormonal contraception needs to be improved in this LAP area.

Community Pharmacies supplying EHC, number of EHC courses supplied in 2013/14, and % supplied by pharmacies							
	Community pharmacies	Supplying EHC	% supplying EHC		Courses of EHC 2013/14	Rate per 1,000 women	% from pharmacies
Congleton LAP	22	17	77%		902	44	82%
Crewe LAP	16	14	88%		1402	68	94%
Knutsford LAP	6	3	50%		138	31	75%
Macclesfield LAP	13	12	92%		757	48	91%
Nantwich LAP	7	6	86%		427	66	88%
Poynton LAP	4	1	25%		73	18	37%
Wilmslow LAP	11	6	55%		303	32	65%
Cheshire East	79	59	75%		4002	49	86%
This table only includes EHC prescribed by GPs or supplied by community pharmacies under a public health contract							
Courses of EHC supplied by community contraception services or by services outside Cheshire East are not included							

9.10 **Potential Services Commissioned by Local Authorities.** Within the Community Pharmacy Survey, pharmacies were asked about additional services they would consider providing. A total of 63 (86.3%) pharmacies out of the 73 who responded would be willing to provide alcohol screening services, 65 (89%) would be interested in providing Chlamydia testing and 67 (91.8%) would be interested in delivering NHS Health Checks.

However, a private consultation room/area is considered essential for patients attending these services and access to a toilet may be relevant for some of them.

10.0 Services Commissioned by South Cheshire CCG and Eastern Cheshire CCG

10.1 **Think Pharmacy Urgent Palliative Care Medicines Service.** This service is commissioned from 27 pharmacies (18 in NHS Eastern Cheshire CCG and 9 in NHS South Cheshire CCG) to ensure that residents in Cheshire East have access to a defined list of medicines that should be provided to patients nearing the end of their life. Each pharmacy providing the service receives a retainer payment to hold the palliative care formulary list of medicines in stock in anticipation of receiving prescriptions to dispense at short notice. The medicines can then be provided to the patient to have at their home so that they can be administered if needed for palliative care. Not all of the medicines may be needed by each patient, but all are prescribed to ensure that they are available if the need arises. The urgent palliative care medicines service is currently available from 10 out of the 11 pharmacies that provide services for 100 hours per week.

10.2 **Think Pharmacy Minor Ailments Service.** The Think Pharmacy Minor Ailments Service aims to support patients to recover quickly and successfully from episodes of ill health that are suitable for management in a community pharmacy setting. The service is currently provided by 73 (92%) community pharmacies in Cheshire East (41 in NHS Eastern Cheshire CCG and 32 in NHS South Cheshire CCG) The service aims to divert patients with specified minor ailments from

general practice and urgent care settings into community pharmacies, where the patient can be seen and treated in a single episode of care.

- people can visit any pharmacy without an appointment for advice and treatment
- the consultation will always be confidential with a qualified pharmacist in a private room
- consultations are free, regardless of whether the pharmacist provides any treatment
- prescriptions are free for those groups who are eligible for free prescriptions, otherwise the medicine will cost no more than the prescription charge

10.3 The minor ailments service has recently been extended to cover a wider range of conditions. These conditions are acne, athlete's foot, conjunctivitis, constipation, cystitis, diarrhoea, gout, hay fever, head lice, indigestion/dyspepsia, impetigo, migraine, oral thrush in infants, piles, rashes (mild dermatitis/eczema), scabies, threadworm and vaginal thrush. The intention is that all pharmacies (except internet pharmacies and those without appropriate consulting rooms) will provide the minor ailments service.

10.4 In the public survey, 226 (31%) of respondents said that they had already used the minor ailments service and there was very little variation (29% to 31%) between the most and least deprived areas. A further 271 (37%) of respondents said that they might use the minor ailments in the future. The key finding in relation to deprivation was that 16% of people living in the most deprived areas were not aware of the minor ailments service, compared to 5% of people living in all other areas. Although the numbers on which these statistics are based are small, this may indicate a need to promote this service in the most deprived 20% of areas in Cheshire East.

10.5 **Think Pharmacy Emergency Supply Service.** NHS Eastern Cheshire CCG and NHS South Cheshire CCG have commissioned an emergency supply service from community pharmacists to support the systems resilience work over the winter period in 2014-15. This service uses the provisions within the Medicines Regulations for pharmacists to make an emergency supply of medicines previously prescribed by a prescriber, but funds the supply as an NHS service. It is expected that this will free up appointments in urgent care and out of hours providers to deal with urgent issues that require a medical assessment. Furthermore, the Think Pharmacy Emergency Supply Service is intended to reduce ongoing need for emergency supplies by signposting patients to services that can support them to order their repeat medicines routinely, such as repeat dispensing and collection and delivery services.

10.6 **Neighbourhood Integrated Medicines Optimisation Service.** NHS Eastern Cheshire CCG has recently commissioned this service from East Cheshire NHS Trust which involves clinical pharmacists providing pharmaceutical services such as medication use reviews, inhaler technique assessments to patients deemed as being "high risk", increasing access for patients to specialist advice and attempting to reduce the need for patients to access urgent care services.

11.0 Services Commissioned by Cheshire, Warrington and Wirral Area Team

11.1 During the 2014/15 flu season the Cheshire, Warrington and Wirral Area Team commissioned a seasonal flu vaccination service for at-risk patients aged from 18 years up to and including 64 years, including pregnant women. 40 (51%) of the 79 community pharmacies in Cheshire East provided this service. This is the first season that this has been in place.

12.0 Dispensing Appliance Contractors

12.1 Dispensing Appliance Contractors (DAC) are unable to supply medicines. Most specialise in dispensing stoma appliances, such as colostomy, urostomy and ileostomy bags and associated products, providing a specialist service to a niche market. DACs cover a wider geographical area than a community pharmacy, often spanning more than one health locality or providing services nationwide. Every DAC has to provide mandatory essential services relating to these products and can choose to provide two advanced services: Appliance Use Reviews (AURs) and Stoma Appliance Customisation (SAC).

12.2 Cheshire East has no DACs within its boundaries. Cheshire East patients requiring appliances may be served by appliance contractors from other areas of the country that operate on a national basis within a network of local distribution centres. There have been no reported issues from patients or prescribers to indicate that patients in Cheshire East have difficulty in obtaining the products that they require.

12.3 Pharmacy contractors can choose to accept prescriptions for appliances and dispense them under their pharmaceutical contract to obtain the service from a DAC or wholesaler located at a national distribution site. It is often a joint decision between the specialist from secondary care and the patient as to where the prescription for an appliance is sent and thus how the dispensing appliance service is provided.

13.0 Distance Selling Pharmacies

13.1 In Cheshire East, there are currently three distance selling/ internet pharmacies, all located within Congleton Local Area Partnership (LAP). In 2013, the two distance selling pharmacies that then existed were responsible for dispensing 0.2% of prescriptions issued to patients in Cheshire East. The third distance selling pharmacy came into existence in September 2014. Use of distance selling/ internet pharmacies will continue to be monitored in line with national policy decisions.

14.0 Dispensing Doctors

14.1 Pharmacies may not always be viable in more rural areas. That is where the services of dispensing doctors can play an important role in ensuring that patients receive their medicines promptly, efficiently, conveniently and to high standards. Certain conditions have to be met to determine whether or not a patient is eligible to receive NHS dispensing services from a general practitioner. They need to live in a designated controlled locality (which is an area that has been determined by NHS England or a predecessor organisation to be 'rural in character') and also live more than 1.6km (as the crow flies) from a pharmacy. Patients who live within 1.6km of a pharmacy cannot be dispensed to, unless they live in a reserved location that was defined in connection with a pharmacy, or the pharmacy is a distance selling pharmacy.

14.2 In the Cheshire East Health and Wellbeing Board area there are currently eight practice premises at which dispensing doctor services are available to eligible patients. These are:

CHESHIRE EAST PHARMACEUTICAL NEEDS ASSESSMENT 2015

- Annandale Medical Centre, Knutsford
- Mobberley Surgery, Mobberley (a branch surgery of Annandale MC)
- Bunbury Medical Practice, Bunbury (a practice in NHS West Cheshire CCG)
- Chelford Surgery, Chelford
- Greenmoss Medical Centre, Scholar Green
- Rode Heath Surgery, Rode Heath (a branch surgery of Greenmoss MC)
- Holmes Chapel Health Centre, Holmes Chapel
- Wrenbury Medical Practice, Wrenbury

15.0 Community Pharmacy Provision in Cheshire East

15.1 At the end of September 2014 there were 79 community pharmacies, 3 distance selling pharmacies and 8 dispensing general practices on the pharmaceutical list in Cheshire East. There were no dispensing appliance contractors.

Community Dispensing in Cheshire East, September 2014					
	Community Pharmacies	Distance Selling Pharmacies	Dispensing Appliance Contractors	GP Practices	Of which, Dispensing GP Practices
Congleton LAP	22	3	0	10	3
Crewe LAP	16	0	0	7	0
Knutsford LAP	6	0	0	3	2
Macclesfield LAP	13	0	0	8	0
Nantwich LAP	7	0	0	6	2
Poynton LAP	4	0	0	3	0
Wilmslow LAP	11	0	0	5	1
NHS Eastern Cheshire CCG area	47	1	0	23	3
NHS South Cheshire CCG area	32	2	0	19	4
Cheshire East	79	3	0	42	8
GP Practices allocated to Localities according to their physical position					
GP Practices include Bunbury Medical Practice and Hulme Hall Medical Group as they lie within Cheshire East					

15.2 The Central and Eastern Cheshire PCT Pharmaceutical Needs Assessment published in February 2011 identified 93 community pharmacies, of which 70 fell within the Cheshire East Local Authority boundary. The number of pharmacies is now 79, an increase of 9 (13 %). Within this, the number of 100 hour pharmacies has increased by 5, from 6 to 11 (83%). The table below shows the change across the various localities.

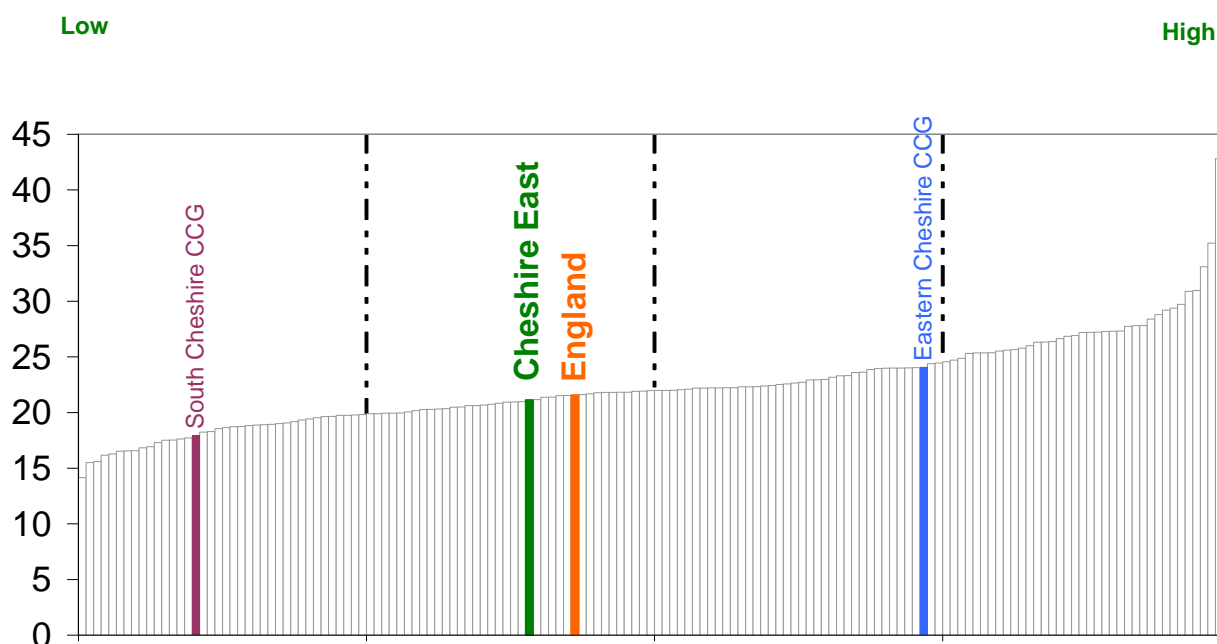
CHESHIRE EAST PHARMACEUTICAL NEEDS ASSESSMENT 2015

Locality	PNA2011		Current		Movement from 2011	
LAP	Community Pharmacies	100 hr	Community Pharmacies	100 hr	Community Pharmacies	100 hr
Congleton LAP	18	1	22	3	4	2
Crewe LAP	15	2	16	3	1	1
Knutsford LAP	5	0	6	1	1	1
Macclesfield LAP	11	2	13	3	2	1
Nantwich LAP	6	1	7	1	1	0
Poynton LAP	4	0	4	0	0	0
Wilmslow LAP	11	0	11	0	0	0
Town						
Crewe	14	2	15	3	1	1
Nantwich	6	1	6	1	0	0
Alsager	3	0	3	0	0	0
Congleton	8	1	11	3	3	2
Middlewich	2	0	2	0	0	0
Sandbach	4	0	4	0	0	0
Knutsford	4	0	5	1	1	1
Macclesfield	11	2	13	3	2	1
Poynton	2	0	2	0	0	0
Wilmslow	9	0	9	0	0	0
Eastern Cheshire CCG Rural	6	0	7	0	1	0
South Cheshire CCG Rural	1	0	2	0	1	0
CCG						
NHS Eastern Cheshire CCG	40	3	47	7	7	4
NHS South Cheshire CCG	30	3	32	4	2	1
Cheshire East	70	6	79	11	9	5

15.3 There is a very strong correlation between population size and the number of local community pharmacies. Crewe, Macclesfield, Congleton and Wilmslow have between nine to fifteen pharmacies. Most of the main towns in Cheshire East are served by at least two pharmacies. Several towns and villages have a single community pharmacy, including Alderley Edge, Audlem, Bollington, Disley, Goostrey, Haslington, Holmes Chapel, Mobberley, Prestbury and Shavington.

15.4 The chart below illustrates the national distribution of the number of community pharmacies per 100,000 population. At 31 March 2013 there were 22 pharmacies per 100,000 in England. Westminster PCT (London) had the most pharmacies per 100,000 with 43 and Herefordshire PCT (West Midlands) the least pharmacies with 14. Cheshire East's rate of 21 per 100,000 was the second lowest in the North West, lower than the North West average of 26 per 100,000. The chart also shows that there are fewer community pharmacies in the NHS South Cheshire CCG area (18 per 100,000) than in the NHS Eastern Cheshire CCG area (24 per 100,000).

PNA Pharmacies per 100,000 population, 2012-13



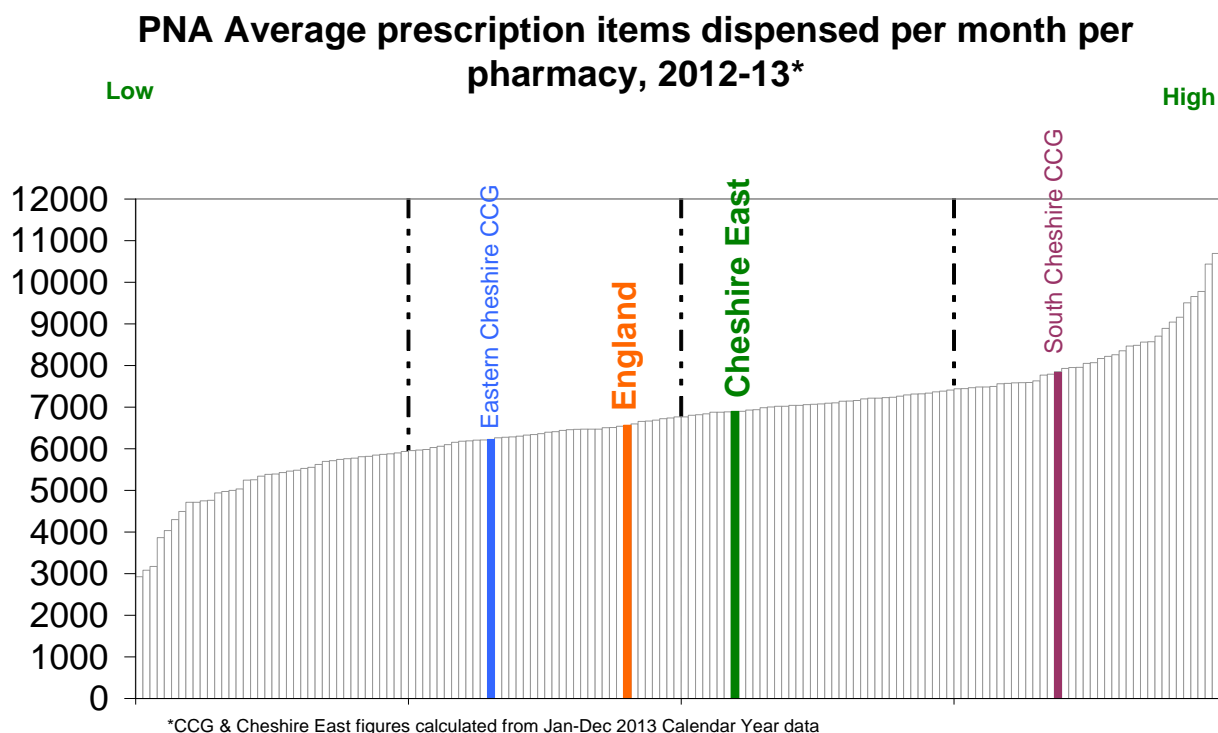
15.5 The table shows the number of community pharmacies per 100,000 population for the seven Local Area Partnership (LAP) areas in Cheshire East. The Wilmslow, Knutsford and Congleton LAPs have more pharmacies per 100,000 than the Cheshire East average, while Poynton, Crewe, Macclesfield and Nantwich LAPs have fewer. The LAP area with the lowest number of community pharmacies per 100,000 is Poynton, although several pharmacies in Cheadle Hulme and Hazel Grove lie just outside the LAP area. Congleton LAP straddles two CCG areas. It contains fewer pharmacies per 100,000 in its South Cheshire CCG portion than in its Eastern Cheshire CCG portion.

Community pharmacies per 100,000 population			
	Community pharmacies	Population Mid 2011	Pharmacies per 100,000 population
Congleton LAP	22	92090	24
Crewe LAP	16	85836	19
Knutsford LAP	6	25056	24
Macclesfield LAP	13	69585	19
Nantwich LAP	7	36057	19
Poynton LAP	4	23804	17
Wilmslow LAP	11	38308	29
NHS Eastern Cheshire CCG	47	194793	24
NHS South Cheshire CCG	32	175943	18
Cheshire East	79	370736	21

15.6 In 2013, the average number of prescriptions dispensed per pharmacy in Cheshire East was 6,930 per month, higher than the North West average of 6,807 and the England average of 6,628 per month. Westminster PCT (London SHA) had the lowest average number of items per pharmacy per month (2,927) and North Tyneside PCT (North East SHA) had the highest average number of items per pharmacy per month (10,691). In 2013, community pharmacies in the

CHESHIRE EAST PHARMACEUTICAL NEEDS ASSESSMENT 2015

South Cheshire CCG area dispensed over 1,000 items more per month (7931) than those in the Eastern Cheshire CCG area (6249), which is consistent with having fewer pharmacies per 100,000 population.



15.7 In 2013, 94.9% of prescriptions issued in Cheshire East were dispensed by community pharmacies located inside Cheshire East. Another 3.4% were dispensed in the surrounding HWB areas, reflecting close geographical proximity and/or commuter or shopper flows (this proportion was highest for Poynton at 15.1%, Middlewich 6.8%, Wilmslow 6.4%, Knutsford 6.0%, and was under 1% for Macclesfield and Crewe). The main map illustrates where most prescriptions were dispensed in surrounding HWB areas. This includes Altrincham in the Trafford HWB area; Cheadle, Hazel Grove and Stockport in the Stockport HWB; Winsford and Northwich in the Cheshire West and Chester HWB; Kidsgrove in Staffordshire HWB; and Hanley in the Stoke-on-Trent HWB area. A further 1.7% of prescriptions were dispensed by community pharmacies elsewhere in the country or by distance selling pharmacies.

15.8 The majority of prescriptions issued by the general practitioners in each town are dispensed by community pharmacists in that town. The major flows between towns occur as inflows to Crewe and Macclesfield. There is also a significant inflow to Nantwich from prescriptions issued in Crewe.

Flows of Prescription Items from Town of Issuing to Town of Dispensing, 2013

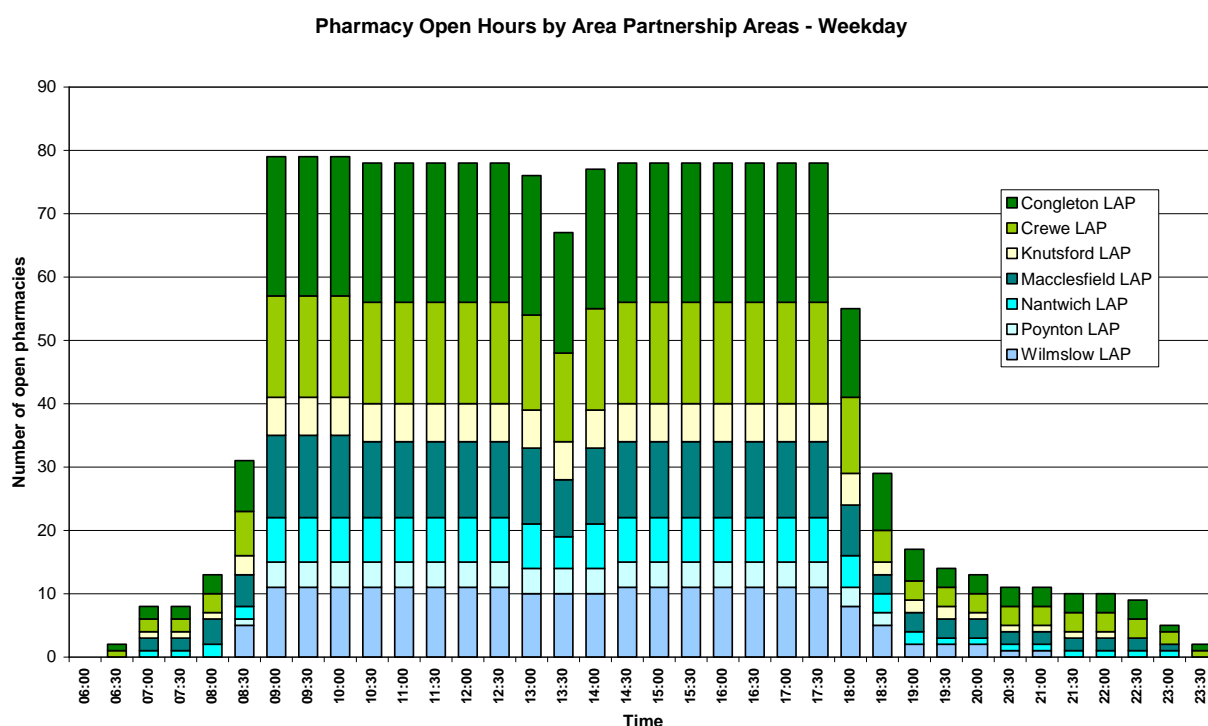
Crewe to Nantwich	37,600
Nantwich to Crewe	27,400
Alsager to Crewe	17,400
Knutsford to Macclesfield	13,900
Poynton to Macclesfield	13,100
Sandbach to Crewe	10,600
Middlewich to Crewe	10,200

16.0 Community Pharmacy Opening Hours

16.1 Community pharmacies are contracted to provide a minimum of 40 hours of essential services per week, the 'core' hours. Many choose to provide more than 40 hours, these extra hours are known as 'supplementary hours'.

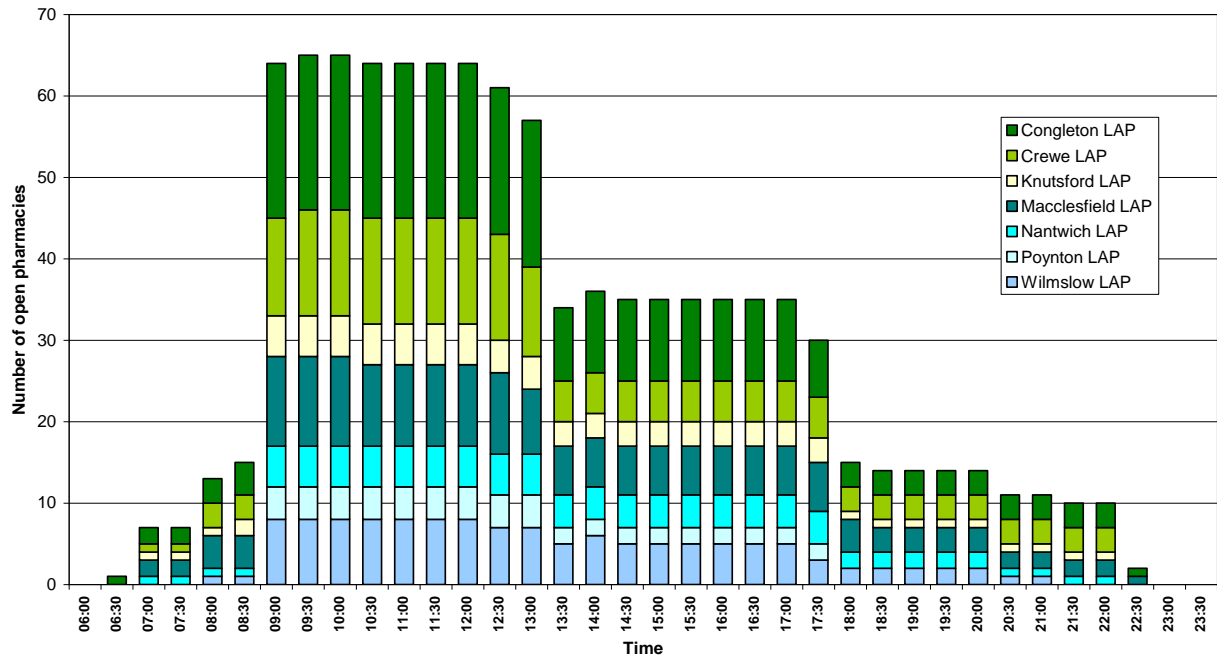
16.2 The graphs over the next three pages illustrate the distribution of core and supplementary hours combined across the Local Area Partnership Areas (LAPs) or Clinical Commissioning Groups (CCG). Reviewing the current provision, there is good coverage during weekdays with extended opening hours from 6.30 in the morning and throughout the day up to midnight. There is some geographical difference in access on Sundays, with no community pharmacies open after 5.00pm in the South Cheshire CCG area.

16.3 There are no 100 hour pharmacies in either the Poynton LAP or the Wilmslow LAP, and these two LAP areas do not have early morning and late night provision on weekdays and Saturday, or evening provision on Sundays. Nevertheless, people living in these LAP areas can use the nearby 100 hour pharmacies in Cheadle and Heald Green (in the Stockport HWB area).

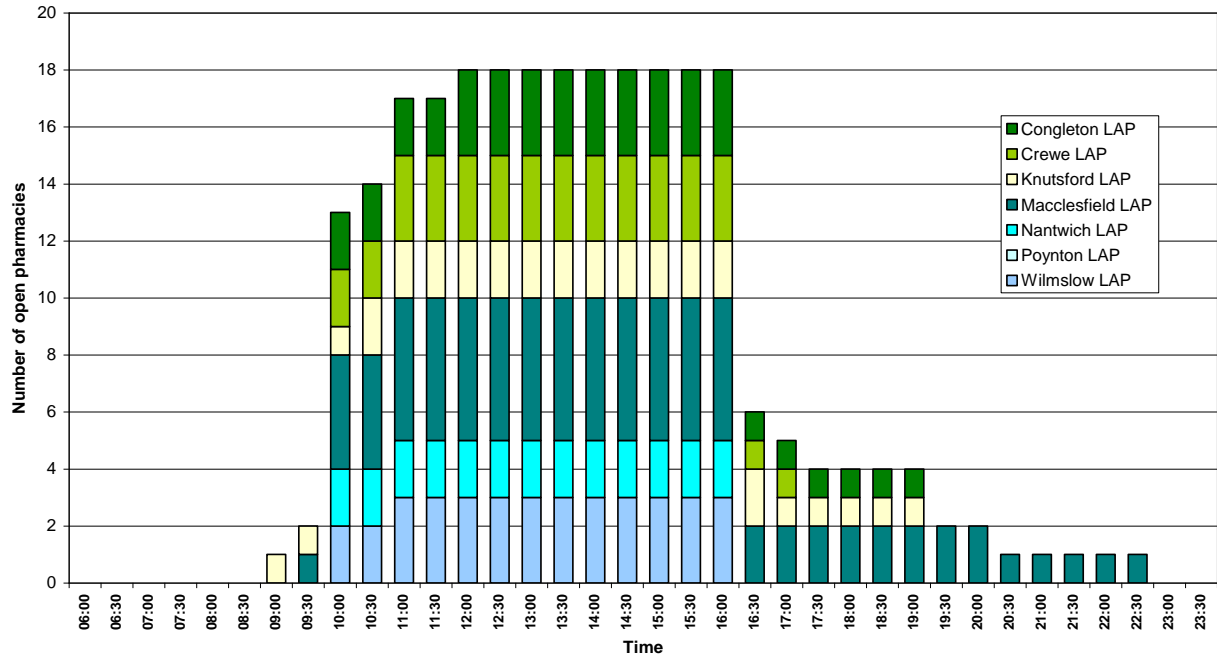


CHESHIRE EAST PHARMACEUTICAL NEEDS ASSESSMENT 2015

Pharmacy Open Hours by Area Partnership Areas - Saturday

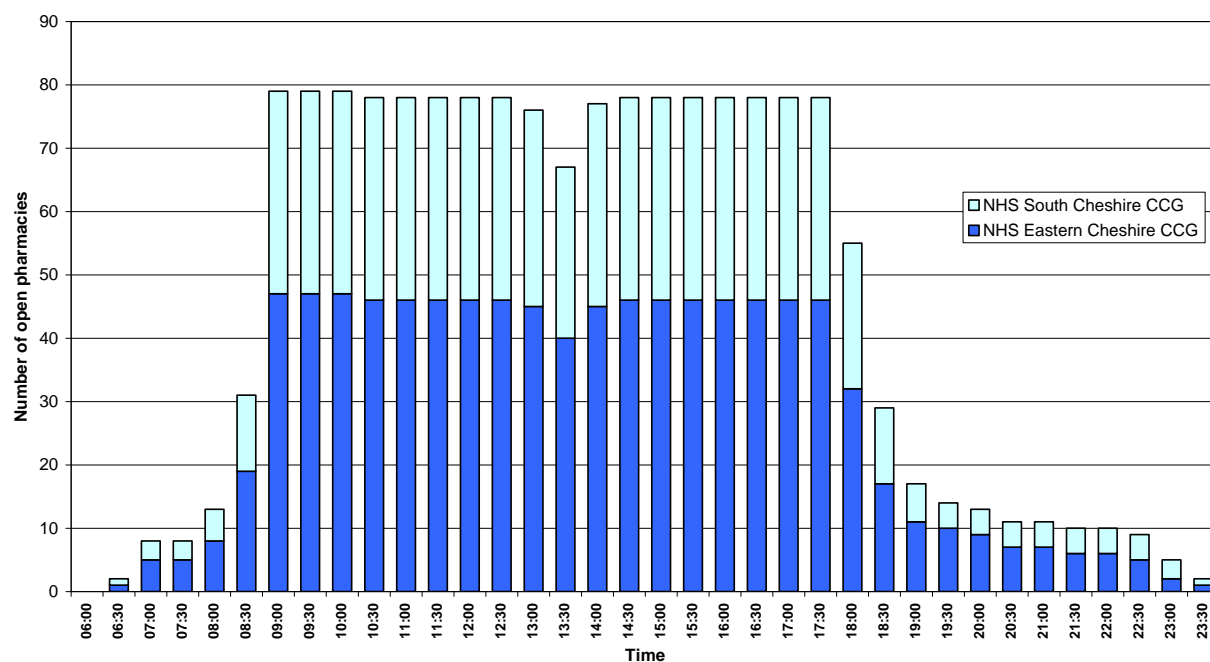


Pharmacy Open Hours by Area Partnership Areas - Sunday

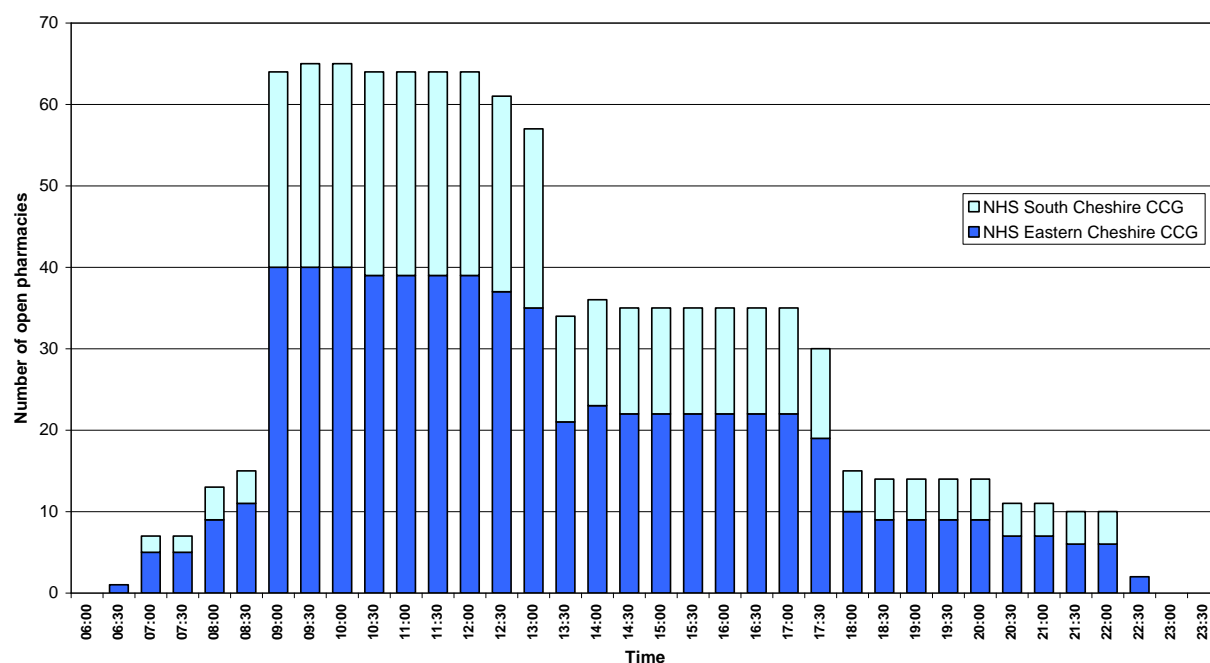


CHESHIRE EAST PHARMACEUTICAL NEEDS ASSESSMENT 2015

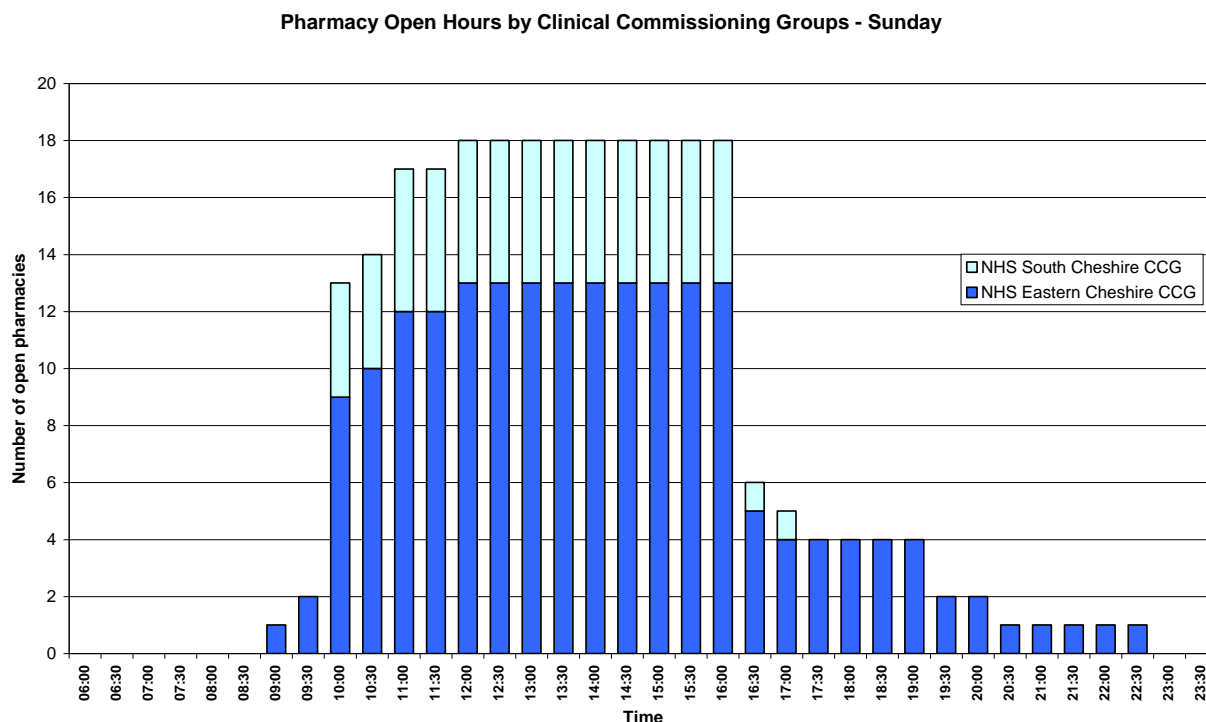
Pharmacy Open Hours by Clinical Commissioning Groups - Weekday



Pharmacy Open Hours by Clinical Commissioning Groups - Saturday



CHESHIRE EAST PHARMACEUTICAL NEEDS ASSESSMENT 2015



17.0 Prescription Items and Prescription Costs

17.1 Prescriptions written by General Medical Practitioners (GPs) and non-medical prescribers (nurses, pharmacists, dentists) comprise the vast majority of prescriptions dispensed in the community. In England in 2011, 98.3 per cent of prescriptions were written by GPs and 1.7 per cent by nurses and other non-medical prescribers.

17.2 A prescription item refers to a single item prescribed by a doctor or non-medical prescriber on a prescription form. If a prescription form includes three medicines, these are counted as three prescription items. The Net Ingredient Cost (NIC) of each medicine refers to the cost of each drug before discounts and does not include any dispensing costs or fees. Within this PNA the terms 'prescribing' and 'dispensing' are used interchangeably to mean 'the number of items' dispensed. The term 'cost' refers to 'net ingredient cost'.

17.3 In relation to the prescribing of items in Cheshire East in 2013:

- 7.39 million items were dispensed overall. The average number of items per head of the population in 2013 was 19.64, compared to 18.3 per head in England in 2011
- The total cost of prescriptions dispensed was £55.4 million. The average cost per head of the population was £147.16, compared to £167.22 per head in England in 2011. The average cost per item was £7.49, compared to £9.16 in England in 2011

17.4 Prescriptions are subject to a prescription charge but many people are eligible for free prescriptions. The groups that are eligible for free prescriptions are:

- where the patient holds a valid prescription pre-payment certificate

- men and women aged 60 and over
- children under age 16, and young people aged 16, 17 and 18 in full time education
- exemption certificate holders, these are: pregnant women, women who have given birth in the previous 12 months, and people with specified medical conditions
- war pensioners, but only in respect of prescriptions for their accepted disablement and an exemption certificate is held
- patients undergoing treatment for cancer
- NHS Low Income Scheme in respect of means tested entitlement
- all prescribed contraceptives are free and do not attract a prescription charge
- personally administered items

17.5 The majority of items are exempt from the prescription charge on the grounds of patients being aged 60 and over. In England, 94.6 per cent of prescription items were free in 2011, although this figure includes prescriptions purchased with pre-payment certificates.

18.0 Community Pharmacy Access – Language / Disability / Ethnic Minority / Sexuality

18.1 All community pharmacies must assess both physical access to the premises and also amendments to basic delivery of essential services for patients with regard to their culture, ethnicity or disability. For example:

- provision of an automatic door or bell to alert staff to the needs of wheelchair users
- provision of a hearing loop
- provision of plain lids for those who have difficulty opening child resistant containers
- provision of large print medication labels
- MARS (medicines administration record sheets) or monitored dosage systems to support medicines adherence
- ability to source and supply non gelatine based products

18.2 A review of current provision was undertaken via the Community Pharmacy Survey in June 2014. The questionnaire that was distributed to all pharmacies asked various questions regarding accessibility and provision of aids for people with poor hearing or eyesight. Questions regarding the provision, accessibility and facilities available within a consultation room or area were also included. 73 (92%) of the 79 pharmacies within Cheshire East returned a completed questionnaire, the following sections give the findings from those who responded.

18.3 The results indicate a high level of accessibility for customers in wheelchairs or with other mobility problems. However, pharmacies do not seem to consider the needs of people with other physical disabilities such as hearing or visual impairments. Although 75% have a hearing loop to support customers wearing hearing aids, only 58% provide large print labels for prescriptions and only 38% have large print leaflets to support people with poor eyesight, only 26 (33%) of the 73 pharmacies provided both.

18.4 The majority of pharmacies 85% have an entrance that enables wheelchair users to access the pharmacy independently, and 87% of these pharmacies stated that all areas of the pharmacy were accessible by wheelchair users. 55% indicated that they had an automatic door

CHESHIRE EAST PHARMACEUTICAL NEEDS ASSESSMENT 2015

and/or a bell at the front door and 66% had designated disabled parking within 10 metres of the pharmacy.

18.5 All pharmacies have seating provision for waiting customers although results from the Community Pharmacy Patient Questionnaire (CPPQ) suggest that these are often insufficient or uncomfortable.

18.6 Of the 72 pharmacies who provide a private consultation room or area, 85% stated that it is accessible by wheelchair users. However the responses to the CPPQ suggest that often customers are unaware of this facility.

18.7 Only 13 (18%) of the 73 pharmacies advised that they have either a pharmacist or other member of staff who could speak at least one additional language to English. There was a wide variety of different languages spoken, but only Urdu, Punjabi, Chinese Mandarin and French were spoken at more than one pharmacy.

18.8 47% of pharmacies indicated that they currently provide awareness training around language and assumptions about sexual identity to staff.

Accessibility aids provided	Percentage of pharmacies providing
Designated disabled parking within 10m	65.8%
Entrance suitable for unaided wheelchair access	84.9%
All areas accessible by wheelchair	84.9%
Accessible by mobility scooter users	52.1%
Automatic door	41.1%
Bell at front door	21.9%
Seating whilst waiting	100.0%
Hearing Loop	75.3%
Large print labels	57.5%
Large print leaflets	38.4%
MAR (Medication Administration Records) charts	61.6%
Consultation area facilities	
Consultation area	98.6%
Accessible by wheelchair	84.9%
Seating for 3 people	87.7%
Bench or table	98.6%
Computer terminal	74.0%
Access to toilet during consultations	37.0%

19.0 Prescription Collection and Delivery Services

19.1 The majority of pharmacies (99%) who responded to the Community Pharmacy Survey offer a repeat prescription ordering services and 80% offer a prescription collection service from patients' GP surgeries. The public questionnaire identified that 49% of the respondents who have a repeat prescription have their prescription collected. 5% of respondents stated that they use the prescription delivery service.

CHESHIRE EAST PHARMACEUTICAL NEEDS ASSESSMENT 2015

Non-NHS funded services	Current provision	
	Number of pharmacies	Percentage
Repeat prescription ordering service	72	98.6%
Collection of prescriptions from surgeries	58	79.5%
Free delivery of dispensed medicines	61	83.6%
Chargeable delivery of dispensed medicines	3	4.1%

20.0 Factors Affecting Prescribing

20.1 Factors which may influence the growth in prescribing, and so the need for pharmaceutical services, include:

- the size of the population
- the age structure of the population, notably the proportion of the elderly, who generally receive more prescriptions than the young
- improvements in diagnosis, leading to earlier recognition of conditions and earlier treatment with medicines
- development of new medicines for conditions with limited treatment options
- development of more medicines to treat common conditions
- increased prevalence of some long term conditions, for example, diabetes
- shifts in prescribing practice in response to national policy, and new guidance and evidence, for example, in cardiovascular disease

21.0 Population and Housing

21.1 Population Structure and Growth

21.1.1 The size of the Cheshire East population is estimated to be 375,600 people in 2014. This is projected to grow by 9,700 (2.6%) over the next five years (to 385,300 people in 2019) and by a further 11,000 (2.8%) over the following five years (396,200 people in 2024).

21.1.2 The majority of the growth between the base year 2012 and 2022 will take place in the Crewe LAP (10.0%) and the Congleton LAP (6.4%). There will be relatively little population growth in the Knutsford LAP (2.0%) or the Nantwich LAP (2.3%), and a net fall in population is projected for the Poynton LAP (-0.9%).

LAP	Year			Percentage change 2012 to 2017	Percentage change 2017 to 2022	Percentage change 2012 to 2022
	2012	2017	2022			
Congleton	92,400	95,000	98,300	2.8%	3.5%	6.4%
Crewe	86,400	90,500	95,000	4.7%	5.0%	10.0%
Knutsford	26,200	26,500	26,800	1.1%	1.1%	2.3%
Macclesfield	69,700	70,600	72,100	1.3%	2.1%	3.4%
Nantwich	36,200	36,600	37,100	1.1%	1.4%	2.5%
Poynton	23,800	23,700	23,600	-0.4%	-0.4%	-0.8%
Wilmslow	37,400	38,400	39,500	2.7%	2.9%	5.6%
Cheshire East	372,100	381,200	392,200	2.4%	2.9%	5.4%

CHESHIRE EAST PHARMACEUTICAL NEEDS ASSESSMENT 2015

21.1.3 Most of the increase in population size will occur in the age groups 60 and above. The number of people aged between 60 and 84 will increase by nearly 20%, and the number of very elderly people aged 85 and over will increase by nearly 50%. There will be very little change in the size of other age groups in the population.

Age Band	Year			Percentage change 2012 to 2017	Percentage change 2017 to 2022	Percentage change 2012 to 2022	Eligibility for free prescriptions
	2012	2017	2022				
0-4	20,400	20,400	20,200	0.0%	-1.0%	-1.0%	} Under 17
5-15	45,700	46,500	48,500	1.8%	4.3%	6.1%	
16-18	13,500	12,500	12,700	-7.4%	1.6%	-5.9%	} Aged 16-18 & in full-time education
19-59	192,400	192,200	187,900	-0.1%	-2.2%	-2.3%	
60-64	24,900	23,200	27,100	-6.8%	16.8%	8.8%	} Aged 60 and over
65-84	65,200	74,500	80,900	14.3%	8.6%	24.1%	
85+	10,200	12,000	15,000	17.6%	25.0%	47.1%	
Total	372,100	381,200	392,200	2.4%	2.9%	5.4%	

21.1.4 People's need for prescribed medicines increases with age. Although Cheshire East is only growing moderately in terms of the overall number of people in the population, the population is living longer and there will be a proportionately higher growth in the number of people in age groups over 60. Prescribing need can be assessed using a measure called the item ASTRO-PU 2013, which is a national weighting formula that weights different age groups based on their current usage of medicines. Using Item ASTRO-PU 2013 weighted populations, there will be an 8.5% growth in medicines use by 2019 and a further 9.1% increase by 2024, a total increase in medicines use of 17.6% over the next ten years.

21.2 Housing Developments

21.2.1 New housing developments in Cheshire East are listed in the tables below, and the information should help guide assessment of any new pharmaceutical provision. The three tables cover those dwellings currently under construction; those where development is likely to start or be completed within the next 3 to 5 years; and also the main Strategic Sites which are identified within the Local Plan Strategy (Submission Version – March 2014). Please note that this shows the position as at 31st December 2014 and the position is constantly changing.

Site address	Town/ settlement area	Local Area Partnership	Site capacity	Completed	Application Reference
Elworth Gardens, Moss Lane, Sandbach	Sandbach	Congleton	269	133	11/3956C
Hind Heath Road, Sandbach	Sandbach	Congleton	269	38	10/2608C
London Road, Holmes Chapel	Holmes Chapel	Congleton	224	63	12/2217C
Loachbrook Farm, Sandbach Road, Congleton	Congleton	Congleton	200	22	13/2604C
Warmingham Lane, Middlewich	Middlewich	Middlewich	194	0	13/5297C
Maw Green Road, Coppenhall, Crewe	Crewe	Crewe	165	0	12/0831N
Warmingham Lane, Middlewich	Middlewich	Middlewich	149	0	12/2584C
Stapeley Water Gardens, Nantwich	Nantwich	Nantwich	146	73	12/1381N
Bombardier, West Street, Crewe	Crewe	Crewe	143	104	13/3102N
Brookhouse Lane/ Brook Valley, Congleton	Congleton	Congleton	126	110	10/1269C
Gunco Lane, Macdesfield	Macclesfield	Macclesfield	124	0	10/0832M
Redhouse Lane, Disley	Disley	Poynton	121	24	12/4837M
Moss Lane, Sandbach	Sandbach	Congleton	120	29	12/0009C
Canal Fields/ Rookery Bridge, Hall Lane, Moston	Sandbach	Congleton	101	76	10/4973C
Wychwood Park, Abbey Park Way, Weston	Crewe	Crewe	100	91	P05/0112

CHESHIRE EAST PHARMACEUTICAL NEEDS ASSESSMENT 2015

21.2.2 The table on the previous page indicates sites of 100 or more dwellings that are currently under construction, with information about the number of dwellings already completed and those remaining to be built, as at 31st December 2014.

21.2.3 The table below shows sites currently benefitting from planning permission, or a resolution to grant planning permission, with a capacity of 100 or more dwellings, where we anticipate that they are likely to make a start on site within the next 3 years.

Site address	Town/ settlement area	Local Area Partnership	Site capacity	Application Reference	Planning stage
Coppenhall East, Remer Street, Crewe	Crewe	Crewe	650	11/1643N	Outline
Abbeyfields/ Middlewich Road, Sandbach	Sandbach	Congleton	278	10/3471C	Outline
North of Parkers Road, Leighton	Crewe	Crewe	269	11/1879N	Outline
Crewe Road, Haslington	Crewe	Crewe	250	13/4301N	Outline
Albion Chemicals site, Booth Lane, Sandbach	Sandbach	Congleton	226	09/2083C	Outline
South of Old Mill Road, Sandbach	Sandbach	Congleton	200	13/2389C	Outline
Black Firs Lane/Chelford Road, Somerford, Congleton	Congleton	Congleton	180	13/2746C	Outline
Off Manchester Road, Tytherington, Macclesfield	Macclesfield	Macclesfield	162	12/4390M	Full
North of Congleton Road, Sandbach	Sandbach	Congleton	160	12/1903C	Outline
Victoria Mills, Macclesfield Road, Holmes Chapel	Holmes Chapel	Congleton	160	08/0492/OU	Outline
North of Moorfields, Willaston	Crewe	Crewe	146	13/3688N	Outline
Close Lane/ Crewe Road, Alsager	Alsager	Congleton	132	13/1305N	Outline
North of Parkers Road, Leighton	Crewe	Crewe	131	11/1879N	Full
Rhodes Field, Crewe Road, Alsager	Alsager	Congleton	110	13/3032C	Outline
Off Hall Drive, Alsager	Alsager	Congleton	109	13/4092C	Outline
Sir William Stanier, Ludford Street, Crewe	Crewe	Crewe	107	13/4382N	Full
Clarence Mill, Mill Road, Bollington	Macclesfield	Macclesfield	104	10/3535M	Full
Irlams/ Stobarts, Knutsford Road, Chelford	Chelford	Macclesfield	100	10/3239M	s106

21.2.4 The next table identifies those Strategic Sites identified within the Local Plan Strategy. These are larger sites (that have a capacity greater than 250 dwellings). We consider that, due to their planning status and activity, they will continue to progress however they are unlikely to be fully developed within the three year timescale of the PNA. Should this occur before April 2018, and additional needs for pharmacy services are identified, a supplementary statement to the PNA will be published. They are worth highlighting as they are vital in meeting the housing needs within Cheshire East and are considered deliverable.

Site address	Town/ settlement area	Local Area Partnership	Site capacity	Application Reference	Planning stage
Kingsley Fields, North West of Nantwich	Nantwich	Nantwich	1100	13/2471N	s106
Glebe Farm, Booth Lane, Middlewich	Middlewich	Congleton	450	13/3449C	s106
Crewe Road, Basword West, Shavington cum Gresty	Crewe	Crewe	370	13/0336N	outline
South of Newcastle Road, Shavington & Wybunbury	Crewe	Crewe	360	12/3114N	outline
White Moss Quarry, Butterson Lane, Barthomley	Alsager	Congleton	350	13/4132N	s106
Twyfords, Lawton Road, Alsager	Alsager	Congleton	335	11/4109C	outline
East of Crewe Road, Savington cum Gresty	Crewe	Crewe	275	13/2069N	outline
Parkgate Lane, Knutsford	Knutsford	Knutsford	250	13/2935M	s106
Old Mill Road, Sandbach	Sandbach	Congleton	250	12/3948C	s106

21.2.5 In addition to the above a safeguarded site on the eastern edge of Handforth (North Cheshire Growth Village) has been identified to meet longer-term development needs. It is anticipated that this is likely to come forward towards the end of the Local Plan Period.

22.0 Ethnicity and Other Protected Characteristics

22.1 The Equality Act (2010) defines nine characteristics which are protected in law. Ethnicity, age, disability, gender reassignment, marriage and civil partnership, pregnancy and maternity, religion and belief and sexual orientation are classed as protected characteristics. In April 2013, the Health and Social Care Act imposed new duties on all the component organisations with respect to reducing inequalities in access and outcomes. In addition to these two Acts, all bodies have a duty to comply with the Human Rights Act. The rights of all these groups and any specific issues regarding their access to services and outcomes from such services must be considered as part of the PNA. The majority of protected characteristics are covered elsewhere in the body of the report, but ethnicity, religion and disability are discussed in more detail below.

22.2 Cheshire East is less ethnically diverse than England, with 96.7% of the population giving their ethnicity as white in the 2011 Census, compared to a national average of 86%. However, ethnic diversity has increased since the 2001 Census, when 98.2% of the population declared their ethnicity to be white. Over a ten year period, the Black Minority Ethnic (BME) population has nearly doubled from 6,200 to 12,200 and all BME groups have increased in number. Of particular note is the increase in those giving their ethnicity as 'other white', which rose from 4,600 to 9,400 between 2001 and 2011. The majority of this increase represents the Eastern European – predominantly Polish – population in Crewe. Wilmslow LAP has the most ethnically diverse population, with 11% 'Non-White British' – 3.9% are Asian and 3.4% 'Other White'.

Ethnicity in Cheshire East, 2001 and 2011 Census

Ethnic Group		Persons		Proportion	
		2001	2011	2001	2011
White	British	338339	346264	96.2%	93.6%
	Irish	2734	2241	0.8%	0.6%
	Other White	4564	9435	1.3%	2.5%
	Total White	345637	357940	98.2%	96.7%
Mixed	White & Black Caribbean	685	1341	0.2%	0.4%
	White & Black African	206	461	0.1%	0.1%
	White & Asian	650	1293	0.2%	0.3%
	Other Mixed	535	778	0.2%	0.2%
	Total Mixed	2076	3873	0.6%	1.0%
Asian or Asian British	Indian	944	2147	0.3%	0.6%
	Pakistani	388	856	0.1%	0.2%
	Bangladeshi	267	504	0.1%	0.1%
	Chinese	958	1125	0.3%	0.3%
	Other Asian	319	1428	0.1%	0.4%
	Total Asian	2876	6060	0.8%	1.6%
Black or Black British	Black Caribbean	372	511	0.1%	0.1%
	Black African	253	664	0.1%	0.2%
	Other Black	89	227	0.0%	0.1%
	Total Black	714	1402	0.2%	0.4%
Other Ethnic Groups		514	852	0.1%	0.2%
All People		351817	370127		

Source: Office for National Statistics

22.3 According to the 2011 Census, 68.9% of Cheshire East residents were Christian. This represents a reduction of 27,500 (10%) since 2001. There was a concomitant increase in the

proportion with no religion or who did not state their religion, which rose from 18.6% in 2001 to 29.3% in 2011. The number of people describing their religion as Buddhist, Hindu, Jewish, Muslim, Sikh or Other has increased, but only Hindu, Muslim, Sikh and Other religion have risen as a proportion of the whole.

22.4 It is known that 4.9% (18,161) of people in Cheshire East reported having poor health over the year preceding the 2011 Census and nearly 18% of residents indicated that they have an illness or disability that limits their day-to-day activities. It is difficult to get a comprehensive picture; various estimates are available via the Projecting Older People Population Information System (POPPI) and Projecting Adult Needs and Service Information (PANSI) or from the latest Census Estimates but some people will have multiple disabilities and therefore may be counted in more than one estimate.

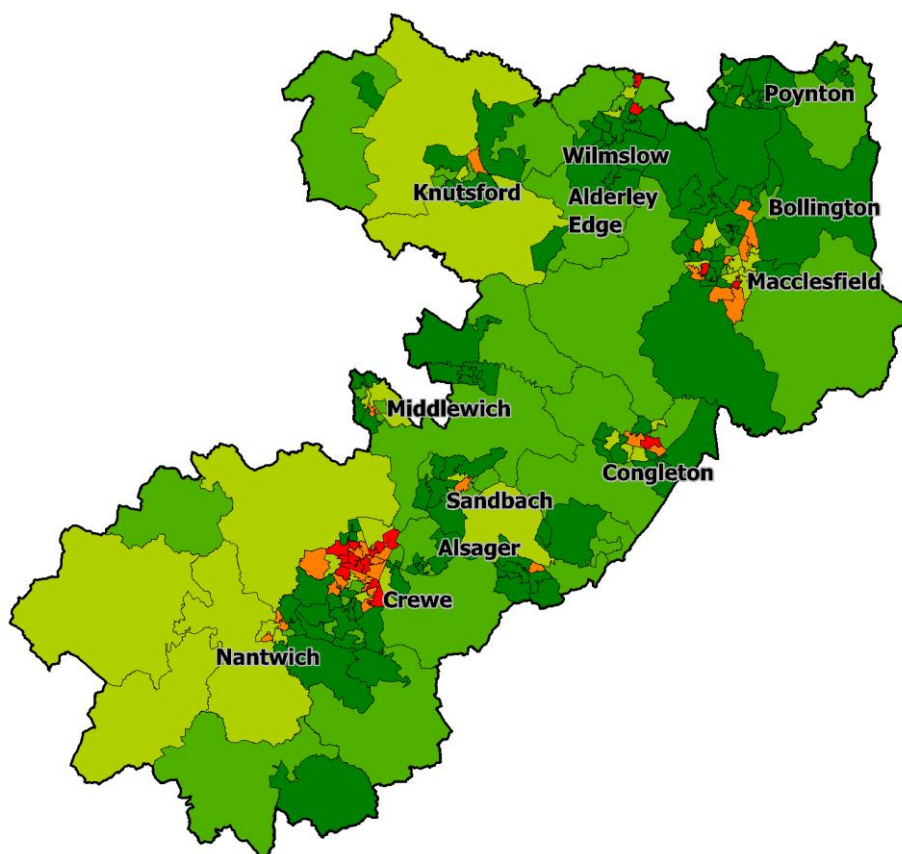
22.5 It is estimated that 14,592 (18.1%) residents over the age of 65 will have mobility problems that affect them with day to day activities such as going out of doors and walking down the road; getting up and down stairs; getting around the house on the level; getting to the toilet; or getting in and out of bed. National prevalence rates applied to local populations suggest that 18,187 of residents of working age may have a moderate physical disability and a further 5,525 may have a serious physical disability. These statistics are reflected in the uptake of disability related benefits with 5,870 claiming Incapacity Benefit/Severe Disablement Allowance and 15,280 claiming Disability Living Allowance. Mental health is the most common condition leading to benefit uptake, 41% of claims.

22.6 National estimates of prevalence for learning disability suggest that there are likely to be 1,437 adults residents with a moderate or severe learning disability. However, a further 5,500 adults are likely to have a mild learning difficulty that may impair their ability to understand instructions and they may need longer consultations or support when visiting a pharmacist.

22.7 2,370 people in Cheshire East are registered as blind or partially sighted, of whom 67% are aged 75 year or over and 46% of them will have additional disabilities. The JSNA identified that there is a large difference in the number of people living with sight loss and those actually registered as blind or sight impaired, estimating that 12,660 residents are living with sight loss. Around 12% (44,283) of the population have some form of hearing loss, and around 2% are regular users of hearing aids.

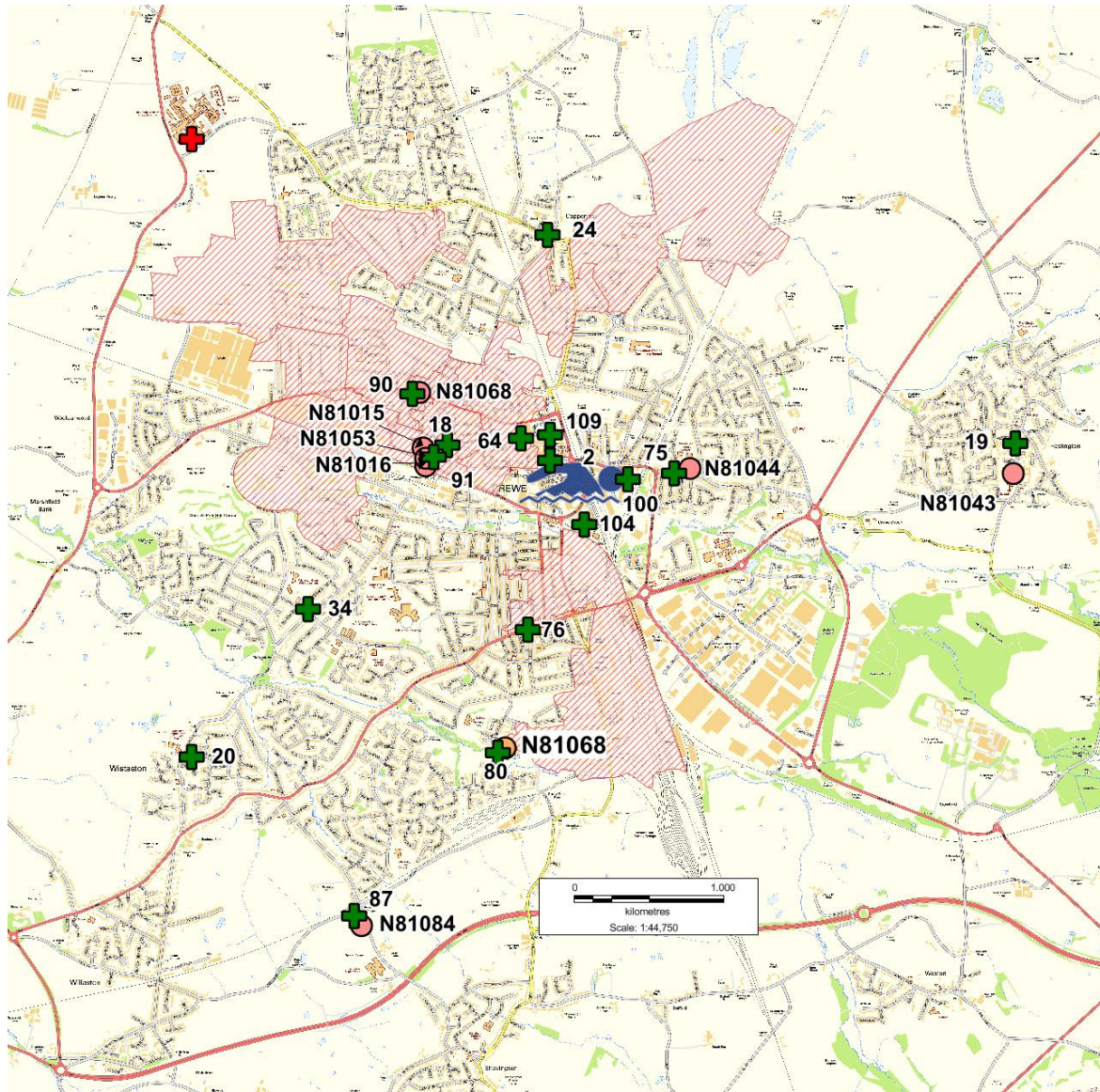
23.0 Deprivation

23.1 The map shows the level of deprivation in Cheshire East by the national Index of Multiple Deprivation (IMD) 2010 quintile. The LSOAs shaded in red are among the 20% most deprived in England, with orange representing the second most deprived 20%. The areas shaded dark green are among the least deprived 20% nationally. Cheshire East is generally very affluent, but small areas of deprivation can be found across the authority, mainly clustering in central Crewe. There are also isolated pockets of deprivation in Macclesfield, Congleton and Wilmslow LAPs.



23.2 About 8% of the population of Cheshire East live in Lower Level Super Output Areas (LSOAs) that are among the 20% most deprived areas in England. Eleven of these LSOAs are in Crewe, two are in Macclesfield, two in Handforth and one in Congleton. Socioeconomic deprivation is strongly associated with early death rates. The Annual Report of the Director of Public Health 2012-2013 found that these areas experienced higher rates of premature mortality from cancer, heart disease, stroke, lung disease and liver disease. People living in these areas will have higher levels of pharmaceutical need than in other areas.

23.3 The map shows a more detailed picture of these 20% most deprived LSOA areas within Crewe, which are shaded in pink. It highlights the fact that many residents have adequate access to medical and pharmaceutical services. However, there is only one community pharmacy located in the north of Crewe. This is labelled 24 on the map.

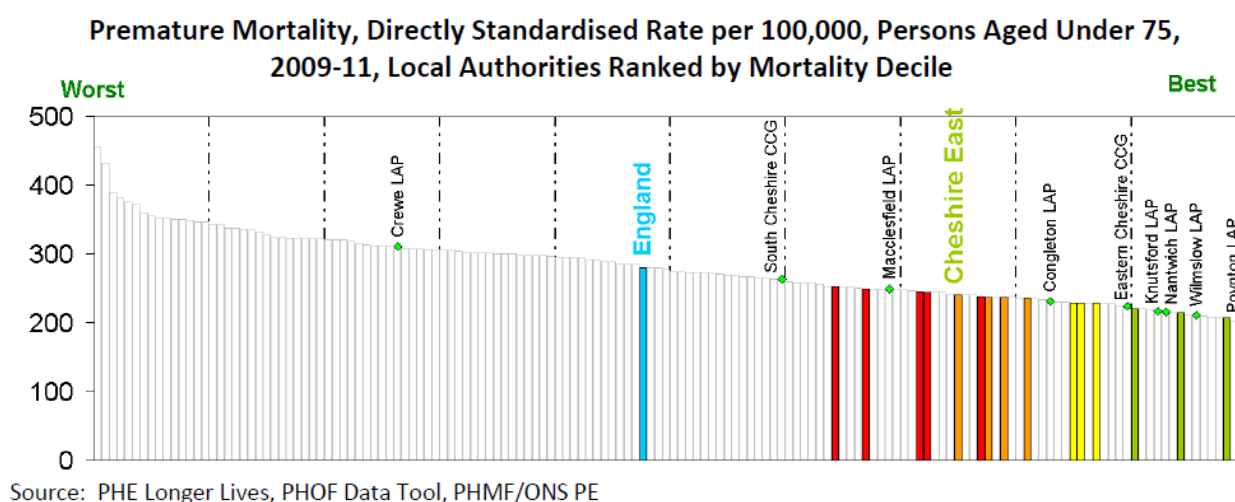


23.4 Some of the responses to the Public Survey could be analysed by level of deprivation. People from the most deprived 20% areas were less likely to visit pharmacies frequently, and were less satisfied with pharmacy services. There was little difference between the other areas.

24.0 Premature Mortality

24.1 The Annual Report of the Director of Public Health 2012-2013 focused on premature mortality, and the actions that are necessary in order for people to live well for longer.

24.2 Cheshire East has lower than average premature mortality compared to the rest of England and is ranked 38 out of 150 local authorities. Cheshire East is one of the least socioeconomically deprived areas in England, and is ranked within the 9th decile (tenth) for deprivation in England (the second least deprived). Yet when compared with other local authorities also ranked in the 9th decile, who have similar socioeconomic deprivation levels, Cheshire East performs less well and is ranked 11 out of 15 local authorities.



24.3 On the graph above, the coloured bars represent other local authorities within Cheshire East's peer group with those marked red being significantly worse than the peer group, orange being slightly worse, yellow being slightly better and green being significantly better. The graph also shows where the different LAP areas in Cheshire East sit on the national scale.

24.4 The significantly worse health outcomes experienced by the people of Crewe adversely affect the average premature mortality rates experienced by both Cheshire East as a whole and also those living in the area served by NHS South Cheshire CCG. Crewe residents experience premature mortality at a rate of 311 per 100,000 whilst for those in Poynton (the LAP with the lowest premature mortality rate) the rate is only 168 per 100,000. Furthermore, reductions in premature mortality in Crewe between 2001-2003 and 2009-2011 have been much more modest than those observed for Cheshire East as a whole.

25.0 Chronic Disease

25.1 The table illustrates the top four most common reasons for people being on a general practice chronic disease register. An important common factor for all these patients is that being on a chronic disease register supports the provision of structured care including the provision of drug treatments. Chronic conditions are common in all LAP areas, but it is not currently possible to make direct comparisons of prevalence between areas as areas with higher numbers of older people will tend to have higher numbers of people with chronic conditions.

CHESHIRE EAST PHARMACEUTICAL NEEDS ASSESSMENT 2015

LAP	Hypertension		Asthma		Diabetes		CHD	
	Numbers	Prevalence	Numbers	Prevalence	Numbers	Prevalence	Numbers	Prevalence
Congleton	14757	15.5%	6071	6.4%	4786	6.1%	3660	3.8%
Crewe	12577	14.3%	5172	5.9%	4400	6.2%	3271	3.7%
Knutsford	3443	13.5%	1426	5.6%	1156	5.5%	923	3.6%
Macclesfield	10514	14.6%	4184	5.8%	3422	5.8%	2415	3.4%
Nantwich	5951	16.1%	2203	6.0%	1732	5.7%	1380	3.7%
Poynton	3672	14.7%	1396	5.6%	1090	5.2%	929	3.7%
Wilmslow	5162	12.7%	2121	5.2%	1482	4.5%	1254	3.1%
Cheshire East	56077	14.6%	22573	5.9%	18069	5.7%	13832	3.6%

25.2 There are other chronic conditions in addition to the above. In Cheshire East general practices have recorded 18,188 people with depression, 14,537 with chronic kidney disease, 11,600 with hypothyroidism, 8,418 with cancer, 7,537 with atrial fibrillation, 6,118 with chronic obstructive pulmonary disease, 2,911 with heart failure, 2,907 with peripheral arterial disease, and 2,361 with epilepsy.

25.3 For some chronic conditions, there are currently no systematically organised programmes of care despite the fact that people may have high associated pharmaceutical needs. These other conditions include chronic pain and musculoskeletal disorders.

26.0 The Top 20 Drugs used in Cheshire East, by Number of Items and Cost

26.1 Total community dispensing in Cheshire East covers all prescriptions dispensed by community pharmacies, appliance contractors and dispensing doctors, as well as prescriptions for items personally administered in general practices. This section of the PNA includes prescriptions dispensed by community pharmacies. It does not include prescriptions dispensed by distance selling pharmacies, or items personally administered in general practices, or dispensing by general practices that are registered as dispensing practices.

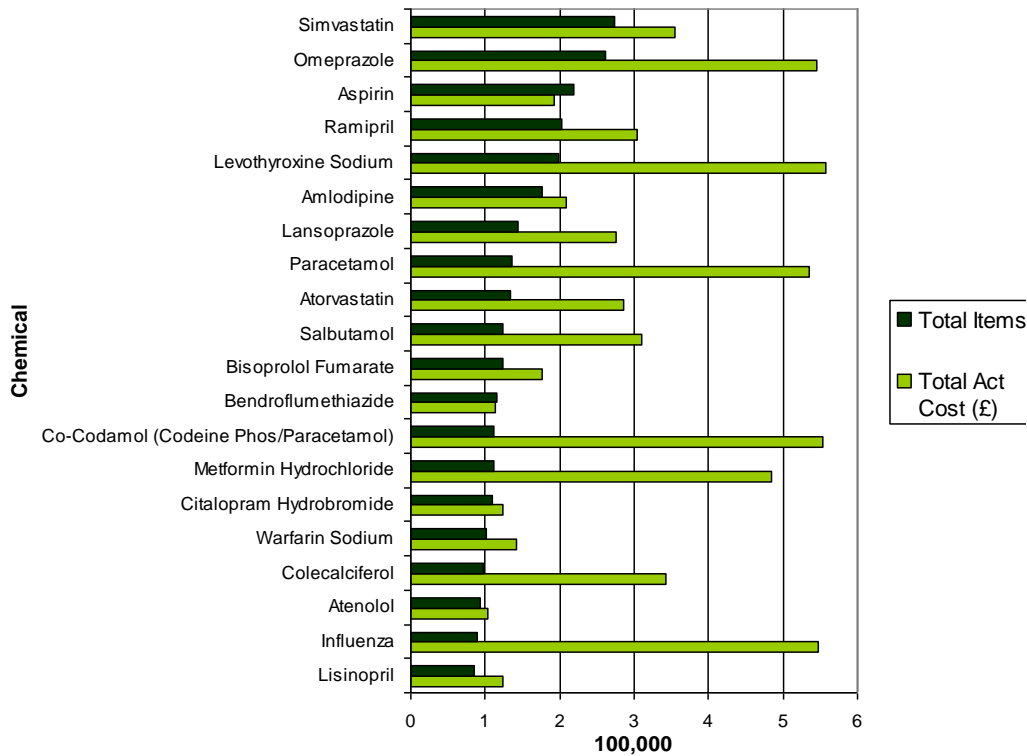
26.2 These charts illustrate the top 20 most commonly used drugs in 2013, in term of the number of prescribed items and the costs of the most expensive drugs. The purpose is not to provide a comprehensive summary of all the drugs that are used to treat particular conditions, but to highlight certain of the most commonly used and most costly drugs.

26.3 Cardiovascular drugs (including statins) comprise 9 of the top 20 most commonly prescribed drugs, with over 1.3 million items just in this short list. Drugs for pain comprise 3 of the top 20, with over 470,000 items prescribed, and gastric acid drugs come third in this short list of 20, with over 450,000 items. There is considerable scope here to develop new approaches to public health that are aimed at more selectively using medicines for situations where lifestyle modification is not sufficient or has not worked.

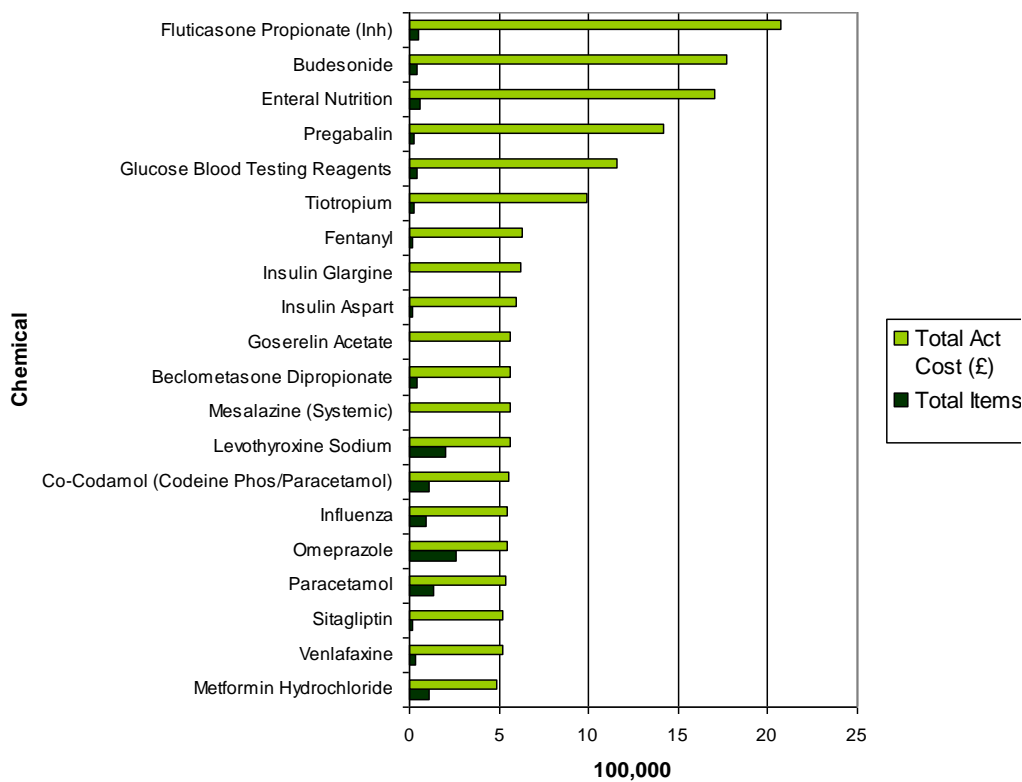
26.4 When looked at by cost, the most expensive single medicines are those used for the management of asthma and chronic obstructive pulmonary disease (£5.4 million), followed by diabetes (£3.4 million), and then pain (over £1.7 million) and enteral nutrition (£1.7 million).

CHESHIRE EAST PHARMACEUTICAL NEEDS ASSESSMENT 2015

Items and Actual Cost for the Top 20 Chemicals by items, Cheshire East 2013-14



Items and Actual Cost for the Top 20 Chemicals by Actual Cost, Cheshire East 2013-14



27.0 The Cheshire East Health and Wellbeing Strategy

27.1 The Joint Health and Wellbeing Strategy for the Population of Cheshire East for 2014-2016 indicates that the Cheshire East Health and Wellbeing Board will work together to make a positive difference to people's lives through a partnership that understands and responds to the needs of the population now and in the future. The Board will do this by:

- engaging effectively with the public
- enabling people to be happier, healthier, and independent for longer
- supporting people to take personal responsibility and make good lifestyle choices
- demonstrating improved outcomes within a broad vision of health and wellbeing

27.2 The Health and Wellbeing Board's priorities for 2014-2016 are:

- **Outcome one - Starting and developing well...** Children and young people have the best start in life; they and their families or carers are supported to feel healthy and safe, reach their full potential and are able to feel part of where they live and involved in the services they receive
- **Outcome two - Working and living well...** Driving out the causes of poor health and wellbeing ensuring that all have the same opportunities to work and live well and reducing the gap in life expectancy that exists between different parts of the Borough
- **Outcome three - Ageing well...** Enabling older people to live healthier and more active lives for longer

27.3 The Joint Health and Wellbeing Strategy is an evolving document and the priorities will change over time. Every community in Cheshire East is different and local solutions will reflect local challenges. But the Health and Wellbeing Board's action will be united around the following four shared commitments:

- **Integrated communities:** Individuals will be enabled to live healthier and happier lives in their communities with minimal support. This will result from a mindset that focuses on people's capabilities rather than deficits; a joint approach to community capacity building that tackles social isolation; the extension of personalisation and assistive technology; and a public health approach that addresses the root causes of disadvantage
- **Integrated case management:** individuals with complex needs – including older people with longer term conditions, complex families and those with mental illness will access services through a single point and benefit from their needs being managed and co-ordinated through a multi-agency team of professionals working to a single assessment, a single care plan and a single key worker
- **Integrated commissioning:** People with complex needs will have access to services that have a proven track record of reducing the need for longer term care. This will be enabled by investing as a partnership at real scale in interventions such as intermediate care, reablement, mental health, drug/alcohol support and housing with support options
- **Integrated enablers:** plans will be enabled by a joint approach to information sharing, a new funding and contracting model that shifts resources from acute and residential care to community based support, a joint performance framework and a joint approach to workforce development

28.0 The Six Statements required by Legislation

28.1 Necessary services: current provision. A statement of the pharmaceutical services that the HWB has identified as services that are provided:

(a) in the area of the HWB and which are necessary to meet the need for pharmaceutical services in its area; and

(b) outside the area of the HWB but which nevertheless contribute towards meeting the need for pharmaceutical services in its area (if the HWB has identified such services).

28.1.1 There is currently an adequate level of community pharmacy provision in every major town in the Borough, although the level of provision is lower in the NHS South Cheshire CCG area than in the NHS Eastern Cheshire CCG area. The maps show that this provision is mostly located either in the town centres or close to GP surgeries.

28.1.2 There is evidence that residents living in peripheral areas of the Borough use pharmacies in adjacent Health and Wellbeing Board areas to have prescriptions dispensed. This is particularly evident in the north of the Borough, where over 76,000 items are dispensed each year by five community pharmacies in Cheadle, Heald Green, Hazel Grove and High Lane.

28.1.3 The public survey shows that 55% of residents are “very satisfied” with community pharmacy services, and a further 33% are “fairly satisfied”. This varies very little within the Borough, and people in all areas express satisfaction with their local pharmacy. Only 4.3% of respondents were “fairly” or “very” dissatisfied with community pharmacy services. There was also a very high level of satisfaction with pharmacy opening hours.

28.2 Necessary services: gaps in provision. A statement of the pharmaceutical services that the HWB has identified (if it has) as services that are not provided in the area of the HWB but which the HWB is satisfied-

(a) need to be provided (whether or not they are located in the area of the HWB) in order to meet a current need for pharmaceutical services, or pharmaceutical services of a specified type, in its area;

(b) will, in specified future circumstances, need to be provided (whether or not they are located in the area of the HWB) in order to meet a future need for pharmaceutical services, or pharmaceutical services of a specified type, in its area.

28.2.1 The prescribing of medicines is predicted to grow by 8.5% by 2019 and then a further 9.1% increase by 2024, a total increase in medicines use of 17.6% over the next ten years. Existing pharmacies will either have to increase their capacity to meet this need, or additional pharmacies will be required.

28.2.2 Most of the increase in prescribing need will occur among older people. This PNA has highlighted several issues relevant to older people, including poor physical access to some community pharmacies, and insufficient accessibility aids in some pharmacies.

28.2.3 As pharmaceutical need is predicted to increase to a greater extent in South Cheshire than in Eastern Cheshire, additional community pharmacy provision is likely to be needed in the

NHS South Cheshire CCG area during the coming years. This might involve a change in the skill mix and capacity within each pharmacy to cope with the predicted additional demand.

28.2.4 This PNA should assist contractors with workforce development, aided by the predicted growth in pharmacy graduates due to an increased number of schools of pharmacy including Keele University (accredited in 2010). Developing additional dispensing capacity will be critical for community pharmacy to fulfil its potential with additional clinical services that might be commissioned by CCGs.

28.2.5 The town of Crewe has the greatest level of deprivation in the Borough, and it also has the highest levels of premature mortality. There is a low level of community pharmacy provision in the north of the town. The population of Crewe may benefit from having a greater level of outreach provision of community pharmacy services by the current pharmacy services.

28.2.6 In both of their Pharmaceutical Needs Assessments, the Cheshire East HWB and the Stockport HWB have highlighted the existence of cross-border dispensing flows across the Cheshire East / Stockport border. There is also a proposed new Growth Village comprising 1,850 homes to the east of Handforth, and a possible development of 920 homes on the former Woodford Aerodrome site. Taken together, these local requirements suggest a need to jointly review community pharmacy provision on both sides of the Cheshire East / Stockport border. This may also highlight other care and health needs including primary care, community and other services that are driven by patient flow rather than geographical area of residence.

28.2.7 Extended opening hours are a beneficial feature of pharmacy provision locally, and in many areas there is weekday access to community pharmacies from 6.30 in the morning and throughout the day up to midnight. There are no community pharmacies open after 5.00pm on Sunday in any part of the South Cheshire CCG area.

28.2.8 There are eight practice premises in Cheshire East at which dispensing doctor services are available to eligible patients. Some of these practices cover very rural areas. Patients who receive dispensing doctor services are able to be supplied with medicines, but they may not be able to benefit from the wider range of essential and advanced services that community pharmacies are able to provide, or the CCG and public health commissioned services.

28.3 Other relevant services: current provision. A statement of the pharmaceutical services that the HWB has identified (if it has) as services that are provided-

(a) in the area of the HWB and which, although they are not necessary to meet the need for pharmaceutical services in its area, nevertheless have secured improvements, or better access to pharmaceutical services in its area;

(b) outside the area of the HWB and which, although they do not contribute towards meeting the need for pharmaceutical services in its area, nevertheless have secured improvements, or better access, to pharmaceutical services in its area;

(c) in or outside the area of the HWB and, whilst not being services of the types described in sub-paragraph (a) or (b), or paragraph 1, they nevertheless affect the assessment by the HWB of the need for pharmaceutical services in its area.

28.3.1 Both CCG's commission a Think Pharmacy urgent palliative care medicines service and an emergency supply service which have led to improvements in access to medicines that may be needed either in an emergency or for palliative care. Cheshire East Council also commission a range of services.

28.3.2 The Think Pharmacy Minor Ailments Service has recently been revised and extended to cover a wider range of conditions. The service appears to be well known to the general public, with 31% of respondents in the public survey saying that they had already used the minor ailments service and a further 37% of respondents saying that they might use it in the future.

28.4 Improvements and better access: gaps in provision. A statement of the pharmaceutical services that the HWB has identified (if it has) as services that are not provided in the area of the HWB but which the HWB is satisfied-

(a) would, if they were provided (whether or not they were located in the area of the HWB), secure improvements, or better access to pharmaceutical services, or pharmaceutical services of a specific type, in its area,

(b) would, if in specified future circumstances they were provided (whether or not they were located in the area of the HWB), secure future improvements, or better access, to pharmaceutical services, or pharmaceutical services or a specified type, in its area.

28.4.1 The Annual Report of the Director of Public Health 2012-2013 has highlighted the high numbers of people in the Borough who have undiagnosed risk factors for cardiovascular disease. There are believed to be 35,300 residents with undiagnosed high blood pressure, 20,300 with undiagnosed kidney disease, and over 3,300 with undiagnosed diabetes. There is a need to identify people with these risk factors using a wide range of community settings, which will include community pharmacies. New approaches to case-finding will need to be considered.

28.5 Other NHS services. A statement of any NHS services provided or arranged by the HWB, NHS CB, a CCG, an NHS trust or an NHS foundation trust to which the HWB has had regard in its assessment, which affect-

(a) the need for pharmaceutical services, or pharmaceutical services of a specified type, in its area; or

(b) whether further provision of pharmaceutical services in its area would secure improvements, or better access to pharmaceutical services, or pharmaceutical services of a specific type in its area.

28.5.1 NHS Eastern Cheshire CCG has recently commissioned a neighbourhood integrated medicines optimisation service from East Cheshire NHS Trust which involves clinical pharmacists providing pharmaceutical services such as medication use reviews, inhaler technique assessments to patients deemed as being "high risk", increasing access for patients to specialist advice and attempting to reduce the need for patients to access urgent care services.

28.6 An explanation of how the assessment has been carried out, in particular –

(a) how it has determined what are the localities in its area;

(b) how it has taken into account (where applicable)-

(i) the different needs of different localities in its area, and

(ii) the different needs of people in its area who share a protected characteristic; and

(c) a report on the consultation that it has undertaken.

28.6.1 Most of the analyses of the different needs of different localities in the area have been based on the geography of Cheshire East's seven Local Area Partnerships, as illustrated in the maps in section 29 and in the LAP appendices. An advantage of using this geography is that it combines major towns with their surrounding rural populations, and so better fits general practice and community pharmacy patient flows. Another advantage of the LAP geography is that local population projections have been prepared for these areas by the Local Authority, which take into account planned housing developments. A disadvantage of the LAP geography is that one of the LAP areas (Congleton LAP) is particularly large, containing five towns and straddling two Clinical Commissioning Groups. This LAP has internal health variations.

28.6.2 The Cheshire East JSNA also contains town-level analyses, constructed from Middle Level Super Output Areas (MSOAs). Town-level analyses illustrate local variations between communities, which is particularly relevant in the Congleton LAP.

28.6.3 NHS Eastern Cheshire CCG covers 52.5% of the population of Cheshire East and NHS South Cheshire CCG covers 47.5% (as per mid-2012 estimates). There are two general practices within the Borough that are aligned to CCGs in neighbouring HWB areas. Bunbury Medical Practice links to NHS Western Cheshire CCG but geographically lies within NHS South Cheshire CCG. In Handforth there is a branch surgery of Cheadle Hulme Health Centre which links to Stockport CCG but geographically lies within NHS Eastern Cheshire CCG.

28.6.4 This Pharmaceutical Needs Assessment has taken into account the different needs of people in its area who share a protected characteristic. A description of these groups and their needs is contained in sections 21 and 22, whilst the response of community pharmacies to these needs is described in section 18 as part of the findings of the Community Pharmacy Survey.

28.6.5 A Public Survey was also carried out to seek the views of the local population about community pharmacy services. Survey responses were downloaded from the Survey Gizmo software (used to conduct the survey) and then analysed using specialising survey software (SPSS – Statistical Processing for the Social Sciences). Headline results were produced in tabular format, with a number of further bespoke cross-tabulations of results also produced. The survey was conducted through two separate campaigns:

- to Citizens' Panel online members: Cheshire East's Citizens' Panel comprises over 3,000 members who are Cheshire East residents aged 18 and above. The panel's demography is broadly representative of the borough's population by gender, age, ethnicity and geographic location. 1,224 Citizens' Panel online members were sent a direct invitation email on the 25th June 2014, with a follow-up reminder email sent on 7th July 2014 to those who had not replied. The survey closed on 16th July 2014. 701 members completed the survey, representing a response rate of 59.4%, with a further 26 people completing the online survey via the Cheshire East Council websites consultation page.
- via Twitter: A link to the survey was tweeted by Cheshire East Council and re-tweeted by a number of twitter users. NHS Eastern Cheshire picked up on the survey and conducted

its own twitter campaign. In total 64 people completed this survey via this Twitter campaign.

28.6.6 A Community Pharmacy Survey was developed in conjunction with the Cheshire, Warrington and Wirral Local Pharmaceutical Committee and the CCG Medicines Management team. The questionnaire was based on that used for the 2011 Central and Eastern Cheshire PNA, with additional questions taken from the questionnaire used by the Manchester Health and Wellbeing Board. It was sent electronically to the superintendents or area managers for onward distribution to all their branches within Cheshire East. 73 out of 79 community pharmacies returned questionnaires, a response rate of 92%.

29.0 Paragraph 7 of Schedule 1 of the 2013 Regulations specifies that HWBs are required to include a map in their PNA identifying the premises at which pharmaceutical services are provided in the area of the HWB.



KEY TO CHESHIRE EAST MAP (above)

- Community pharmacy
- Distance selling pharmacy
- Community pharmacy in neighbouring HWB dispensing >2000 items per annum to Cheshire East residents
- GP Practice
- GP Practice (Branch Surgery)
- GP Practice (Dispensing)
- GP Practice (Non-Cheshire East CCG)

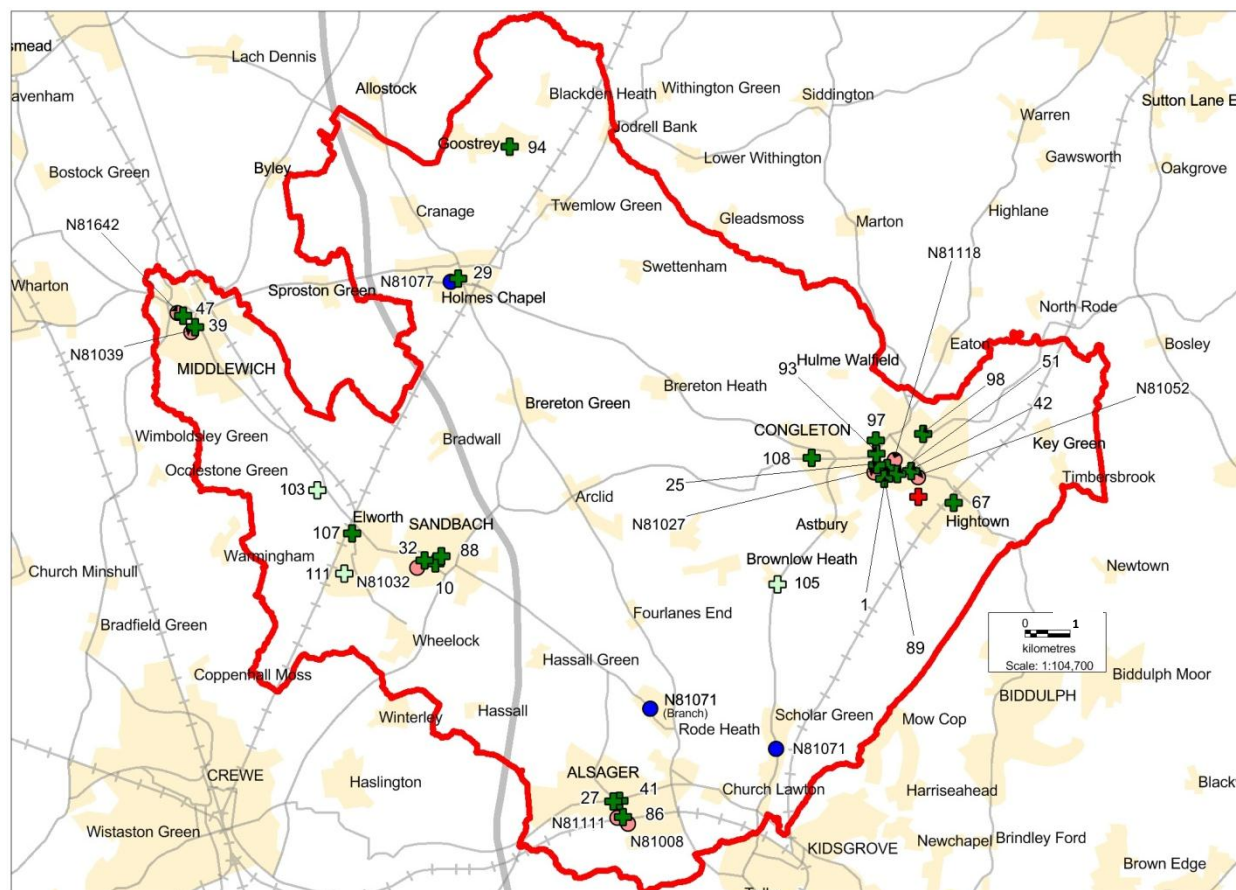
KEY TO LAP MAPS (subsequent pages)

- | | | | |
|--|--------------|--|---|
| | LAP Boundary | | Pharmacy |
| | Road | | Distance selling pharmacy |
| | Motorway | | GP Practice |
| | Railway | | GP Practice (Branch Surgery) |
| | Settlement | | GP Practice (Non-Cheshire East CCG) |
| | | | GP Practice (Dispensing) |
| | | | Hospital |
| | | | Crewe Lifestyle Centre (due to open 2015) |

The key to the pharmacies in neighbouring HWB is on page 68

CHESHIRE EAST PHARMACEUTICAL NEEDS ASSESSMENT 2015

LAP PROFILE: CONGLETON LAP



Opening Hours (Supplementary hours in bold; Core hours in brackets)

Map Code	Pharmacy Address	Monday	Tuesday	Wednesday	Thursday	Friday	Saturday	Sunday	100 hours
1	Boots 14-16 Bridge Street Congleton CW12 1AY	09:00-13:00, 14:00-17:30 (09:30-13:00, 14:00-17:15)	09:00-13:00, 14:00-17:30 (09:30-13:00, 14:00-17:15)	09:00-13:00, 14:00-17:30 (09:30-13:00, 14:00-17:15)	09:00-13:00, 14:00-17:30 (09:30-13:00, 14:00-17:15)	09:00-13:00, 14:00-17:30 (09:30-13:00, 14:00-17:15)	09:00-13:00, 14:00-17:30 (09:30-13:00, 14:00-16:45)	Closed	No
10	Boots 5-7 High Street Sandbach CW11 1AH	09:00-17:30 (09:00-13:00, 14:00-17:00)	09:00-17:30 (09:00-13:00, 14:00-17:00)	09:00-17:30 (09:00-13:00, 14:00-17:00)	09:00-17:30 (09:00-13:00, 14:00-17:00)	09:00-17:30 (09:00-13:00, 14:00-17:00)	09:00-17:30 (09:30-13:00, 14:00-15:30)	Closed	No
25	Lloyds Pharmacy 41a West Street Congleton CW12 1JN	08:30-18:15 (08:30-12:30, 13:30-16:30)	08:30-18:15 (08:30-12:30, 13:30-16:30)	08:30-18:15 (08:30-12:30, 13:30-16:30)	08:30-18:15 (08:30-12:30, 13:30-17:00)	08:30-18:15 (08:30-12:30, 13:30-17:00)	09:00-13:00	Closed	No
27	Lloyds Pharmacy 25 Lawton Road Alsager ST7 2AA	08:15-18:30 (09:00-13:00, 14:00-18:00)	08:15-18:30 (09:00-13:00, 14:00-18:00)	08:15-18:30 (09:00-13:00, 14:00-18:00)	08:15-18:30 (09:00-13:00, 14:00-18:00)	08:15-18:30 (09:00-13:00, 14:00-18:00)	09:00-17:00 (No core hours)	Closed	No
29	Lloyds Pharmacy 39-41 London Road Holmes Chapel CW4 7AP	08:30-19:00 (08:30-11:00, 15:00-19:00)	08:30-19:00 (08:30-11:00, 15:00-19:00)	08:30-19:00 (08:30-11:00, 15:00-19:00)	08:30-19:00 (08:30-11:00, 15:00-19:00)	08:30-19:00 (08:30-11:00, 15:00-19:00)	08:30-17:00 (08:30-12:00, 13:00-17:00)	Closed	No
32	The Co-Operative Pharmacy Ashfields PCC Middlewich Road Sandbach CW11 1DH	08:30-19:00 (09:00-13:00, 14:00-18:00)	08:30-19:00 (09:00-13:00, 14:00-18:00)	08:30-19:00 (09:00-13:00, 14:00-18:00)	08:30-19:00 (09:00-13:00, 14:00-18:00)	08:30-19:00 (09:00-13:00, 14:00-18:00)	Closed	Closed	No
39	Rowlands Pharmacy St Anne's Walk Middlewich CW10 9BE	09:00-13:20, 13:40-18:00 (09:00-13:00, 14:00-18:00)	09:00-13:20, 13:40-18:00 (09:00-13:00, 14:00-18:00)	09:00-13:20, 13:40-17:30 (09:00-13:00, 14:00-17:30)	09:00-13:20, 13:40-18:00 (09:00-13:00, 14:00-18:00)	09:00-13:20, 13:40-18:00 (09:00-13:20, 13:50-18:00)	09:00-13:00 (No core hours)	Closed	No
41	The Co-Operative Pharmacy Lawton Road Alsager ST7 2AA	08:45-18:45 (09:00-13:00, 14:00-18:00)	08:45-18:45 (09:00-13:00, 14:00-18:00)	08:45-17:30 (09:00-13:00, 14:00-18:00)	08:45-18:45 (09:00-13:00, 14:00-18:00)	08:45-18:45 (09:00-13:00, 14:00-18:00)	08:45-13:00 (No core hours)	Closed	No
42	The Co-Operative Pharmacy 1 Park Lane Congleton CW12 3DN	08:45-18:30 (09:00-13:00, 14:00-18:00)	08:45-18:30 (09:00-13:00, 14:00-18:00)	08:45-18:30 (09:00-13:00, 14:00-18:00)	08:45-18:30 (09:00-13:00, 14:00-18:00)	08:45-18:30 (09:00-13:00, 14:00-18:00)	09:00-13:00 (No core hours)	Closed	No

CHESHIRE EAST PHARMACEUTICAL NEEDS ASSESSMENT 2015

47	Rowlands Pharmacy 28 Wheelock Street Middlewich CW10 9AG	09:00-13:00, 13:20-17:30 (09:00-13:00, 14:00-17:30)	09:00-13:00, 13:20-17:30 (09:00-13:00, 14:00-17:30)	09:00-13:00, 13:20-17:30 (09:00-13:00, 14:00-17:30)	09:00-13:00, 13:20-17:30 (09:00-13:00, 14:00-17:30)	09:00-13:00, 13:20-17:30 (09:00-13:00, 14:00-17:30)	09:00-13:00, 13:20-17:30 (09:00-13:00, 14:00-17:30)	Closed	No
51	Superdrug Pharmacy 39-41 High Street Congleton CW12 1AU	09:00-17:30 (09:00-13:00, 15:00-17:30)	09:00-17:30 (09:00-13:00, 15:00-17:30)	09:00-17:30 (09:00-13:00, 15:00-17:30)	09:00-17:30 (09:00-13:00, 15:00-17:30)	09:00-17:30 (09:00-13:00, 15:00-17:30)	09:00-17:30 (09:00-13:00, 14:30-17:30)	Closed	No
67	Mossley Pharmacy 18 Biddulph Road Mossley Congleton CW12 3LG	09:00-13:00, 14:00-18:00	09:00-13:00, 14:00-18:00	09:00-13:00, 14:00-18:00	09:00-13:00, 14:00-18:00	09:00-13:00, 14:00-18:00	09:00-13:00 (No core hours)	Closed	No
86	The Co-Operative Pharmacy Cedars MC 12 Sandbach Road S Alsager ST7 2AD	08:30-18:30 (09:00-13:00, 13:30-17:30)	08:30-18:30 (09:00-13:00, 13:30-17:30)	09:00-17:00 (09:00-13:00, 13:30-17:30)	08:30-18:30 (09:00-13:00, 13:30-17:30)	08:30-18:30 (09:00-13:00, 13:30-17:30)	Closed	Closed	No
88	The Co-Operative Pharmacy Unit 3 The Commons Sandbach CW11 1EG	09:00-18:00 (09:00-13:00, 14:00-18:00)	09:00-18:00 (09:00-13:00, 14:00-18:00)	09:00-18:00 (09:00-13:00, 14:00-18:00)	09:00-18:00 (09:00-13:00, 14:00-18:00)	09:00-18:00 (09:00-13:00, 14:00-18:00)	09:00-17:30 (No core hours)	Closed	No
89	The Co-Operative Pharmacy 2 Mill Street Congleton CW12 1AB	09:00-17:30 (09:00-13:00, 13:30-17:30)	09:00-17:30 (09:00-13:00, 13:30-17:30)	09:00-17:30 (09:00-13:00, 13:30-17:30)	09:00-17:30 (09:00-13:00, 13:30-17:30)	09:00-17:30 (09:00-13:00, 13:30-17:30)	09:00-13:00 (No core hours)	Closed	No
93	Tesco Instore Pharmacy Barn Road Congleton CW12 1LR	08:00-22:30	06:30-22:30	06:30-22:30	06:30-22:30	06:30-22:30	06:30-22:00	10:00-16:00	Yes
94	Goostrey Pharmacy No 3 Cheshire House 164 Main Road Goostrey CW4 8JP	09:00-17:30 (09:00-17:00)	09:00-17:30 (09:00-17:00)	09:00-17:30 (09:00-17:00)	09:00-17:30 (09:00-17:00)	09:00-17:30 (09:00-17:00)	Closed	Closed	No
97	Boots Unit E Retail Park Barn Road Congleton CW12 1LJ	08:00-00:00	08:00-00:00	08:00-00:00	08:00-00:00	08:00-00:00	08:00-22:00	10:00-16:00	Yes
98	Salus Pharmacy 62a Havannah Street Buglawton Congleton CW12 2AT	09:00-18:00 (09:00-17:00)	09:00-18:00 (09:00-17:00)	09:00-18:00 (09:00-17:00)	09:00-18:00 (09:00-17:00)	09:00-18:00 (09:00-17:00)	09:00-13:00 (No core hours)	Closed	No
107	Wise Pharmacy 11 London Road Elworth Sandbach CW11 3BD	09:00-17:30 (09:00-13:00, 14:00-17:30)	09:00-17:30 (09:00-13:00, 14:00-17:30)	09:00-17:30 (09:00-13:00, 14:00-17:30)	09:00-17:30 (09:00-13:00, 14:00-17:30)	09:00-17:30 (09:00-13:00, 14:00-17:30)	09:00-12:00 (09:30-12:00)	Closed	No
108	West Heath Pharmacy West Heath Shopping Centre Congleton CW12 4NB	09:00-17:30 (09:00-17:00)	09:00-17:30 (09:00-17:00)	09:00-17:30 (09:00-17:00)	09:00-17:30 (09:00-17:00)	09:00-17:30 (09:00-17:00)	09:00-13:00	Closed	No
110	Congleton Pharmacy Readesmoor Group Practice 29-31 West Street Congleton CW12 1JP	07:00-22:30	07:00-22:30	07:00-22:30	07:00-22:30	07:00-22:30	07:00-22:30	12:00-19:00	Yes

Distance selling pharmacies

Map Code	Pharmacy Name
103	Moston Pharmacy Services
105	Keen Pharmacy Ltd
111	Counter Chemist Direct

CHESHIRE EAST PHARMACEUTICAL NEEDS ASSESSMENT 2015

CONGLETON LAP: CCG and Public Health Commissioned Services

Map Code	Pharmacy	CCG Commissioned Services		Public Health Commissioned Services			
		PCS	MAS	SC	NE	SS	EHC
1	Boots, 14-16 Bridge Street, Congleton	No	Yes	Yes	No	No	Yes
10	Boots, 5-7 High Street, Sandbach	No	Yes	Yes	No	Yes	Yes
25	Lloyds Pharmacy, 41a West Street, Congleton	No	Yes	Yes	Yes	Yes	Yes
27	Lloyds Pharmacy, 25 Lawton Road, Alsager	Yes	Yes	Yes	Yes	Yes	Yes
29	Lloyds Pharmacy, 39-41 London Road, Holmes Chapel	Yes	Yes	Yes	No	Yes	Yes
32	The Co-Operative Pharmacy, Ashfields Primary Care Centre, Sandbach	Yes	Yes	Yes	Yes	Yes	Yes
39	Rowlands Pharmacy, St Anne's Walk, Middlewich	Yes	Yes	Yes	Yes	No	No
41	The Co-Operative Pharmacy, Lawton Road, Alsager	No	Yes	No	No	Yes	No
42	The Co-Operative Pharmacy, 1 Park Lane, Congleton	Yes	Yes	Yes	No	No	Yes
47	Rowlands Pharmacy, 28 Wheelock Street, Middlewich	No	Yes	No	No	Yes	Yes
51	Superdrug Pharmacy, 39-41 High Street, Congleton	No	Yes	Yes	Yes	Yes	Yes
67	Mossley Pharmacy, 18 Biddulph Road, Congleton	No	Yes	Yes	No	No	Yes
86	The Co-Operative Pharmacy, Cedars Medical Centre	No	Yes	Yes	No	Yes	Yes
88	The Co-Operative Pharmacy, Unit 3, The Commons, Sandbach	No	Yes	Yes	No	Yes	No
89	The Co-Operative Pharmacy, 2 Mill Street, Congleton	Yes	Yes	Yes	No	No	Yes
93	Tesco Instore Pharmacy, Barn Road, Congleton	Yes	Yes	Yes	No	Yes	Yes
94	Goostrey Pharmacy, No 3 Cheshire House, Goostrey	No	Yes	No	No	Yes	Yes
97	Boots, Unit E Retail Park, Barn Road, Congleton	Yes	Yes	Yes	No	No	Yes
98	Salus Pharmacy, 62a Havannah Street, Buglawton	No	No	Yes	Yes	No	Yes
107	Wise Pharmacy, 11 London Road, Elworth, Sandbach	No	No	Yes	Yes	Yes	Yes
108	West Heath Pharmacy, Unit 3, Holmes Chapel Road, Congleton	No	No	No	No	Yes	Yes
110	Congleton Pharmacy, Readesmoor Group Practice, Congleton	No	Yes	No	No	No	No
PCS = Palliative Care Scheme; MAS = Minor Ailment Scheme; SC = Supervised Consumption; NE = Needle Exchange; SS = Stop Smoking; EHC = Emergency Hormonal Contraception							

CONGLETON LAP: Advanced Services

Map Code	Pharmacy	Dispense Appliances	MUR	New Med	AUR	SAC
1	Boots, 14-16 Bridge Street, Congleton	All types	Yes	Yes		
10	Boots, 5-7 High Street, Sandbach	All types	Yes	Yes		
25	Lloyds Pharmacy, 41a West Street, Congleton	All types	Yes	Yes		
27	Lloyds Pharmacy, 25 Lawton Road, Alsager					
29	Lloyds Pharmacy, 39-41 London Road, Holmes Chapel	All types	Yes	Yes		
32	The Co-Operative Pharmacy, Ashfields Primary Care Centre	All types	Yes	Yes		Yes
39	Rowlands Pharmacy, St Anne's Walk, Middlewich	All types	Yes	Yes		
41	The Co-Operative Pharmacy, Lawton Road, Alsager	All types	Yes	Yes		Yes
42	The Co-Operative Pharmacy, 1 Park Lane, Congleton	All types	Yes	Yes		Yes
47	Rowlands Pharmacy, 28 Wheelock Street, Middlewich	All types	Yes	Yes	Yes	
51	Superdrug Pharmacy, 39-41 High Street, Congleton					
67	Mossley Pharmacy, 18 Biddulph Road, Congleton	All types	Yes	Yes		
86	The Co-Operative Pharmacy, Cedars Medical Centre, Alsager	All types	Yes	Yes		Yes
88	The Co-Operative Pharmacy, Unit 3, The Commons, Sandbach	All types	Yes	Yes		Yes
89	The Co-Operative Pharmacy, 2 Mill Street, Congleton	All types	Yes	Yes		Yes
93	Tesco Instore Pharmacy, Barn Road, Congleton	All types	Yes	Yes		

CHESHIRE EAST PHARMACEUTICAL NEEDS ASSESSMENT 2015

94	Goostrey Pharmacy, No 3 Cheshire House, Goostrey	All types	Yes	Yes		
97	Boots, Unit E Retail Park, Barn Road, Congleton	Just dressings	Yes	Yes		
98	Salus Pharmacy, 62a Havannah Street, Buglawton	All types	Yes	Yes		
107	Wise Pharmacy, 11 London Road, Elworth, Sandbach	All types	Yes	Yes		
108	West Heath Pharmacy, Unit 3, Holmes Chapel Road, Congleton	All types	Yes	Yes		
110	Congleton Pharmacy, Readesmoor Group Practice, Congleton					
MUR = Medicines Use Review; New Med = New Medicines Service; AUR = Appliance Review Service; SAC = Stoma Appliance Customisation						

CONGLETON LAP: Accessibility

Map Code	Pharmacy	DP	WA	WA All	AMS	AD/B	S	HL	LPL	CA	CAWA	T
1	Boots, 14-16 Bridge Street		Yes			Yes	Yes	Yes	Yes	Yes	Yes	
10	Boots, 5-7 High Street	Yes	Yes	Yes	Yes	Yes	Yes	Yes	Yes	Yes	Yes	
25	Lloyds Pharmacy, 41a West Street	Yes	Yes	Yes	Yes	Yes	Yes	Yes	Yes	Yes	Yes	
27	Lloyds Pharmacy, 25 Lawton Road											
29	Lloyds Pharmacy, 39-41 London Road	Yes	Yes	Yes	Yes	Yes	Yes	Yes	Yes	Yes	Yes	
32	The Co-Operative Pharmacy, Ashfields PCC	Yes	Yes				Yes	Yes		Yes		
39	Rowlands Pharmacy, St Anne's Walk	Yes	Yes	Yes	Yes	Yes	Yes	Yes	Yes	Yes	Yes	
41	The Co-Operative Pharmacy, Lawton Road	Yes	Yes	Yes			Yes	Yes	Yes	Yes	Yes	Yes
42	The Co-Operative Pharmacy, 1 Park Lane	Yes	Yes				Yes	Yes		Yes		
47	Rowlands Pharmacy, 28 Wheelock Street	Yes		Yes		Yes	Yes	Yes	Yes	Yes	Yes	
51	Superdrug Pharmacy, 39-41 High Street											
67	Mossley Pharmacy, 18 Biddulph Road		Yes	Yes		Yes	Yes		Yes	Yes	Yes	Yes
86	The Co-Operative Pharmacy, Cedars Medical Centre	Yes	Yes	Yes			Yes	Yes		Yes	Yes	Yes
88	The Co-Operative Pharmacy, Unit 3	Yes	Yes	Yes			Yes	Yes		Yes	Yes	
89	The Co-Operative Pharmacy, 2 Mill Street	Yes	Yes				Yes	Yes		Yes		
93	Tesco Instore Pharmacy, Barn Road	Yes	Yes	Yes	Yes	Yes	Yes	Yes	Yes	Yes	Yes	Yes
94	Goostrey Pharmacy, No 3 Cheshire House			Yes	Yes	Yes	Yes		Yes	Yes		Yes
97	Boots, Unit E Retail Park	Yes	Yes	Yes	Yes	Yes	Yes	Yes		Yes	Yes	Yes
98	Salus Pharmacy, 62a Havannah Street		Yes	Yes	Yes	Yes	Yes		Yes	Yes	Yes	
107	Wise Pharmacy, 11 London Road						Yes		Yes	Yes		Yes
108	West Heath Pharmacy, Unit 3	Yes	Yes	Yes	Yes		Yes		Yes	Yes	Yes	Yes
110	Congleton Pharmacy, Readesmoor Group Practice											
DP = Designated disabled parking within 10m; WA = Entrance suitable for unaided wheelchair; WA all = All areas accessible by wheelchair; AMS = Accessible by mobility scooter users; S = Seating whilst waiting; HL = Hearing loop; LPL = Large print labels or leaflets; CA = Consultation area; CAWA = Consultation area accessible by wheelchair; T = Access to toilet during consultation												

CONGLETON LAP: General Practices

GP Practice Code	GP Practice Address	Surgery Type	Dispensing Practice	Responsible CCG
N81008	The Cedars Medical Centre, Sandbach Rd South, Alsager, Stoke On Trent, ST7 2LU	Main	No	NHS South Cheshire CCG
N81027	Readesmoor Medical Group Practice, 29-31 West Street, Congleton, Cheshire, CW12 1JP	Main	No	NHS Eastern Cheshire CCG
N81032	Ashfields Primary Care Centre, Middlewich Road, Sandbach, Cheshire, CW11 1EQ	Main	No	NHS South Cheshire CCG
N81039	Oaklands, Middlewich Medical Centre, St. Ann's Walk, Middlewich, Cheshire, CW10 9BE	Main	No	NHS South Cheshire CCG
N81052	Lawton House Surgery, Bromley Road, Congleton, Cheshire, CW12 1QG	Main	No	NHS Eastern Cheshire CCG
N81071	Greenmoss Medical Centre, Portland Drive, Scholar Green, Cheshire, ST7 3BT	Main	Yes	NHS South Cheshire CCG
N81071	Rode Heath Surgery, Greenmoss Medical Centre, 130 Heath Avenue, Rode Heath, Stoke On Trent, ST7 3TH	Branch	Yes	NHS South Cheshire CCG
N81077	The Health Centre (Holmes Chapel), Holmes Chapel Health Ctr, London Road, Holmes Chapel, Cheshire, CW4 7BB	Main	Yes	NHS Eastern Cheshire CCG
N81111	Merepark Medical Centre, 12 Sandbach Road South, Alsager, Cheshire, ST7 2LU	Main	No	NHS South Cheshire CCG
N81118	Meadowside Medical Centre, Meadowsides, Mountbatten Way, Congleton, Cheshire, CW12 1DY	Main	No	NHS Eastern Cheshire CCG
N81642	Water's Edge Medical Centre, Lex House, 10-12 Leadsmithy Street, Middlewich, Cheshire, CW10 9BH	Main	No	NHS South Cheshire CCG

CHESHIRE EAST PHARMACEUTICAL NEEDS ASSESSMENT 2015

Which pharmacy do you use?	Congleton LAP		Cheshire East	
	Count	%	Count	%
I use the same pharmacy all the time	69	36.7%	241	37.6%
I use different pharmacies but visit one most often	92	48.9%	305	47.6%
I use different pharmacies and none more frequently than any other	27	14.4%	95	14.8%
Total	188	100.0%	641	100.0%

How do you travel to the pharmacy?	Congleton LAP		Cheshire East	
	Count	%	Count	%
Car	123	65.1%	465	72.7%
Walk	98	51.9%	265	41.4%
Bike	5	2.6%	29	4.5%
Public transport	5	2.6%	11	1.7%
Delivered	9	4.8%	18	2.8%
Other	2	1.1%	8	1.3%
Total	189	100.0%	640	100.0%

How satisfied are you with the opening hours?	Congleton LAP		Cheshire East	
	Count	%	Count	%
Very satisfied	88	46.6%	303	47.2%
Fairly satisfied	57	30.2%	202	31.5%
Neither satisfied nor dissatisfied	25	13.2%	80	12.5%
Fairly dissatisfied	5	2.6%	15	2.3%
Very dissatisfied	0	0.0%	4	0.6%
Dont know	14	7.4%	38	5.9%
Total	189	100.0%	642	100.0%

Overall satisfaction with services	Congleton LAP		Cheshire East	
	Count	%	Count	%
Very satisfied	90	50.6%	341	55.1%
Fairly satisfied	63	35.4%	204	33.0%
Neither satisfied nor dissatisfied	11	6.2%	41	6.6%
Fairly dissatisfied	10	5.6%	20	3.2%
Very dissatisfied	2	1.1%	7	1.1%
Dont know	2	1.1%	6	1.0%
Total	178	100.0%	619	100.0%

Use of the minor ailment service	Congleton LAP		Cheshire East	
	Count	%	Count	%
Have used	65	35.5%	184	29.8%
Haven't used, but might in future	67	36.6%	239	38.7%
Haven't used and dont intend to in future	41	22.4%	165	26.7%
Dont know	10	5.5%	29	4.7%
Total	183	100.0%	617	100.0%

Location and access to pharmacies	Congleton LAP		Cheshire East	
	Count	%	Count	%
Live in a rural area with access to a community pharmacy within the rural area	33	17.6%	139	21.7%
Live in a rural area with access to a pharmacy within a nearby town	19	10.1%	86	13.4%
Live in a rural area and can have my prescription dispensed by my doctors surgery	13	6.9%	34	5.3%
Live in a rural area and use an online pharmacy	1	0.5%	2	0.3%
I live in a urban area and access a Town based pharmacy	120	63.8%	365	56.9%
I live in a urban area and use an online pharmacy	1	0.5%	8	1.2%
I live in a urban area and access a rural based pharmacy	1	0.5%	2	0.3%
Not Applicable	0	0.0%	6	0.9%
Other	0	0.0%	0	0.0%
Total	188	100.0%	642	100.0%

CHESHIRE EAST PHARMACEUTICAL NEEDS ASSESSMENT 2015

80	The Co-Operative Pharmacy 1a Brookhouse Drive Crewe, CW2 6NA	08:45-13:00, 14:00-18:00 (08:45-13:00, 14:15-18:00)	08:45-13:00, 14:00-18:00 (08:45-13:00, 14:15-18:00)	08:45-13:00, 14:00-18:00 (08:45-13:00, 14:15-18:00)	08:45-13:00, 14:00-18:00 (08:45-13:00, 14:15-18:00)	08:45-13:00, 14:00-18:00 (08:45-13:00, 14:15-18:00)	Closed	Closed	No
87	The Co-Operative Pharmacy Rope Lane MC Shavington Crewe, CW2 5DA	08:30-18:30 (09:00-13:00, 14:00-18:00)	08:30-18:30 (09:00-13:00, 14:00-18:00)	08:30-18:30 (09:00-13:00, 14:00-18:00)	08:30-18:30 (09:00-13:00, 14:00-18:00)	08:30-18:30 (09:00-13:00, 14:00-18:00)	09:00-13:00 (No core hours)	Closed	No
90	West Street Pharmacy 143 West Street Crewe, CW1 3HH	09:00-18:00 (09:00-12:30, 14:00-18:00)	09:00-18:00 (09:00-12:30, 14:00-18:00)	09:00-18:00 (09:00-12:30, 14:00-18:00)	09:00-18:00 (09:00-12:30, 14:00-18:00)	09:00-18:00 (09:00-12:30, 14:00-18:00)	09:00-13:00 (10:30-13:00)	Closed	No
91	Eagle Bridge Pharmacy Eagle Bridge Dunwoody Way Crewe, CW1 3AW	08:30-20:00 (09:00-17:00)	08:30-18:30 (09:00-17:00)	08:30-18:30 (09:00-17:00)	08:30-18:30 (09:00-17:00)	08:30-18:30 (09:00-17:00)	09:00-13:00 (No core hours)	Closed	No
100	Boots Unit 12 Grand Junction Retail Park Crewe, CW1 2RP	08:00-00:00	08:00-00:00	08:00-00:00	08:00-00:00	08:00-00:00	08:00-22:00	11:00-17:00	Yes
104	Tesco Instore Pharmacy Vernon Way Crewe, CW1 2DD	06:30-22:30	06:30-22:30	06:30-22:30	06:30-22:30	06:30-22:30	08:00-22:00	10:00-16:00	Yes
109	Clear Pharmacy 31-32 The Market Centre Victoria Street Crewe, CW1 2NG	08:45-17:30 (09:00-13:30, 14:00-17:30)	08:45-17:30 (09:00-13:30, 14:00-17:30)	08:45-17:30 (09:00-13:30, 14:00-17:30)	08:45-17:30 (09:00-13:30, 14:00-17:30)	08:45-17:30 (09:00-13:30, 14:00-17:30)	08:45-17:30 (No core hours)	Closed	No

CREWE LAP: CCG and Public Health Commissioned Services

Map Code	Pharmacy	CCG Commissioned Services		Public Health Commissioned Services			
		PCS	MAS	SC	NE	SS	EHC
2	Boots, 56-58 Market Street	Yes	Yes	Yes	Yes	Yes	Yes
18	Rowlands Pharmacy, 66 Richard Moon Street	No	Yes	Yes	No	Yes	Yes
19	Rowlands Pharmacy, Haslington Surgery	No	Yes	Yes	No	No	Yes
20	Rowlands Pharmacy, 7 Kings Drive, Wistaston	No	Yes	No	No	No	No
24	Rydale Pharmacy, 18 North Street	No	Yes	Yes	No	Yes	Yes
34	The Co-Operative Pharmacy, 3 The Precinct, Wistaston	No	Yes	Yes	No	Yes	Yes
64	Asda Pharmacy, Victoria Centre	Yes	Yes	No	No	No	No
75	The Co-Operative Pharmacy, Hungerford Medical Centre	No	Yes	Yes	No	Yes	Yes
76	The Co-Operative Pharmacy, 139-141 Nantwich Road	No	Yes	Yes	No	Yes	Yes
80	The Co-Operative Pharmacy, 1a Brookhouse Drive	No	Yes	Yes	No	Yes	Yes
87	The Co-Operative Pharmacy, Rope Lane Medical Centre, Shavington	No	Yes	No	No	Yes	Yes
90	West Street Pharmacy, 143 West Street	No	Yes	Yes	No	Yes	Yes
91	Eagle Bridge Pharmacy, Eagle Bridge Health Ctr	No	Yes	Yes	No	Yes	Yes
100	Boots, Unit 12, Grand Junction Retail Park	Yes	Yes	Yes	Yes	Yes	Yes
104	Tesco Instore Pharmacy, Vernon Way	Yes	Yes	Yes	No	Yes	Yes
109	Clear Pharmacy, 31-32 The Market Centre	No	Yes	Yes	Yes	Yes	Yes
PCS = Palliative Care Scheme; MAS = Minor Ailment Scheme; SC = Supervised Consumption; NE = Needle Exchange; SS = Stop Smoking; EHC = Emergency Hormonal Contraception							

CHESHIRE EAST PHARMACEUTICAL NEEDS ASSESSMENT 2015

CREWE LAP: Advanced Services

Map Code	Pharmacy	Dispense Appliances	MUR	New Med	AUR	SAC
2	Boots, 56-58 Market Street	All types	Yes	Yes		
18	Rowlands Pharmacy, 66 Richard Moon Street	All types	Yes	Yes		Yes
19	Rowlands Pharmacy, Haslington Surgery	All types	Yes	Yes		
20	Rowlands Pharmacy, 7 Kings Drive, Wistaston	Excluding incontinence appliances	Yes	Yes		
24	Rydale Pharmacy, 18 North Street	All types	Yes	Yes		
34	The Co-Operative Pharmacy, 3 The Precinct, Wistaston	All types	Yes	Yes		Yes
64	Asda Pharmacy, Victoria Centre	All types	Yes	Yes		
75	The Co-Operative Pharmacy, Hungerford Medical Centre	All types	Yes	Yes		Yes
76	The Co-Operative Pharmacy, 139-141 Nantwich Road		Yes	Yes		Yes
80	The Co-Operative Pharmacy, 1a Brookhouse Drive	All types	Yes	Yes		Yes
87	The Co-Operative Pharmacy, Rope Lane Medical Centre, Shavington	All types	Yes	Yes		Yes
90	West Street Pharmacy, 143 West Street	All types	Yes	Yes		Yes
91	Eagle Bridge Pharmacy, Eagle Bridge Health Ctr	All types	Yes	Yes		Yes
100	Boots, Unit 12, Grand Junction Retail Park	All types	Yes	Yes		
104	Tesco Instore Pharmacy, Vernon Way	All types	Yes	Yes		
109	Clear Pharmacy, 31-32 The Market Centre	All types	Yes	Yes		

MUR = Medicines Use Review; New Med = New Medicines Service; AUR = Appliance Review Service; SAC = Stoma Appliance Customisation

CREWE LAP: Accessibility

Map Code	Pharmacy	DP	WA	WA All	AMS	AD/B	S	HL	LPL	CA	CAWA	T
2	Boots, 56-58 Market Street	Yes	Yes	Yes	Yes	Yes	Yes	Yes		Yes	Yes	
18	Rowlands Pharmacy, 66 Richard Moon Street		Yes	Yes	Yes	Yes	Yes		Yes	Yes	Yes	
19	Rowlands Pharmacy, Haslington Surgery	Yes	Yes	Yes	Yes	Yes	Yes	Yes	Yes	Yes	Yes	Yes
20	Rowlands Pharmacy, 7 Kings Drive, Wistaston		Yes	Yes	Yes		Yes	Yes	Yes	Yes	Yes	
24	Rydale Pharmacy, 18 North Street		Yes	Yes	Yes		Yes		Yes	Yes	Yes	
34	The Co-Operative Pharmacy, 3 The Precinct, Wistaston	Yes	Yes	Yes			Yes	Yes		Yes	Yes	
64	Asda Pharmacy, Victoria Centre	Yes	Yes	Yes	Yes	Yes	Yes	Yes	Yes	Yes	Yes	Yes
75	The Co-Operative Pharmacy, Hungerford Medical Ctr	Yes	Yes	Yes			Yes	Yes		Yes	Yes	Yes
76	The Co-Operative Pharmacy, 139-141 Nantwich Road	Yes	Yes	Yes			Yes	Yes		Yes	Yes	Yes
80	The Co-Operative Pharmacy, 1a Brookhouse Drive	Yes	Yes	Yes			Yes	Yes		Yes	Yes	
87	The Co-Operative Pharmacy, Rope Lane Medical Ctr	Yes	Yes				Yes	Yes		Yes		
90	West Street Pharmacy, 143 West Street		Yes	Yes	Yes	Yes	Yes	Yes	Yes	Yes	Yes	
91	Eagle Bridge Pharmacy, Eagle Bridge Health Ctr	Yes	Yes	Yes	Yes	Yes	Yes	Yes	Yes	Yes	Yes	Yes
100	Boots, Unit 12, Grand Junction Retail Park	Yes	Yes	Yes	Yes	Yes	Yes	Yes	Yes	Yes	Yes	Yes
104	Tesco Instore Pharmacy, Vernon Way		Yes	Yes	Yes	Yes	Yes	Yes	Yes	Yes	Yes	Yes
109	Clear Pharmacy, 31-32 The Market Centre	Yes	Yes	Yes	Yes		Yes		Yes	Yes	Yes	Yes

DP = Designated disabled parking within 10m; WA = Entrance suitable for unaided wheelchair; WA all = All areas accessible by wheelchair; AMS = Accessible by mobility scooter users; S = Seating whilst waiting; HL = Hearing loop; LPL = Large print labels or leaflets; CA = Consultation area; CAWA = Consultation area accessible by wheelchair; T = Access to toilet during consultation

CREWE LAP: General Practices

GP Practice Code	GP Practice Address	Surgery Type	Dispensing Practice	Responsible CCG
N81015	The Delamere Practice, Eagle Bridge Health and Wellbeing Centre, Dunwoody Way, Crewe, Cheshire, CW1 3AW	Main	No	NHS South Cheshire CCG
N81016	Millcroft Medical Centre, Eagle Bridge Health and Wellbeing Centre, Dunwoody Way, Crewe, Cheshire, CW1 3AW	Main	No	NHS South Cheshire CCG
N81043	Haslington Surgery, Haslington Surgery, Crewe Road, Haslington, Crewe, Cheshire, CW1 5QY	Main	No	NHS South Cheshire CCG
N81044	Hungerford Medical Centre, Hungerford Medical Centre, School Crescent, Crewe, Cheshire, CW1 5HA	Main	No	NHS South Cheshire CCG
N81053	Earnswood Medical Centre, Eagle Bridge Health and Wellbeing Centre, Dunwoody Way, Crewe, Cheshire, CW1 3AW	Main	No	NHS South Cheshire CCG
N81068	Gresty Brook Medical Centre, Grosvenor Medical Centre, Brookhouse Drive, Crewe, CW2 6NA	Branch	No	NHS South Cheshire CCG
N81068	Grosvenor Medical Centre, Grosvenor Street, Crewe, Cheshire, CW1 3HB	Main	No	NHS South Cheshire CCG
N81084	Rope Green Medical Centre, Rope Green Medical Centre, Rope Lane, Shavington, Crewe, Cheshire, CW2 5DA	Main	No	NHS South Cheshire CCG

CHESHIRE EAST PHARMACEUTICAL NEEDS ASSESSMENT 2015

Which pharmacy do you use?	Crewe LAP		Cheshire East	
	Count	%	Count	%
I use the same pharmacy all the time	40	35.7%	241	37.6%
I use different pharmacies but visit one most often	52	46.4%	305	47.6%
I use different pharmacies and none more frequently than any other	20	17.9%	95	14.8%
Total	112	100.0%	641	100.0%

How do you travel to the pharmacy?	Crewe LAP		Cheshire East	
	Count	%	Count	%
Car	97	87.4%	465	72.7%
Walk	31	27.9%	265	41.4%
Bike	7	6.3%	29	4.5%
Public transport	3	2.7%	11	1.7%
Delivered	2	1.8%	18	2.8%
Other	0	0.0%	8	1.3%
Total	111	100.0%	640	100.0%

How satisfied are you with the opening hours?	Crewe LAP		Cheshire East	
	Count	%	Count	%
Very satisfied	43	38.4%	303	47.2%
Fairly satisfied	40	35.7%	202	31.5%
Neither satisfied nor dissatisfied	15	13.4%	80	12.5%
Fairly dissatisfied	3	2.7%	15	2.3%
Very dissatisfied	1	.9%	4	0.6%
Dont know	10	8.9%	38	5.9%
Total	112	100.0%	642	100.0%

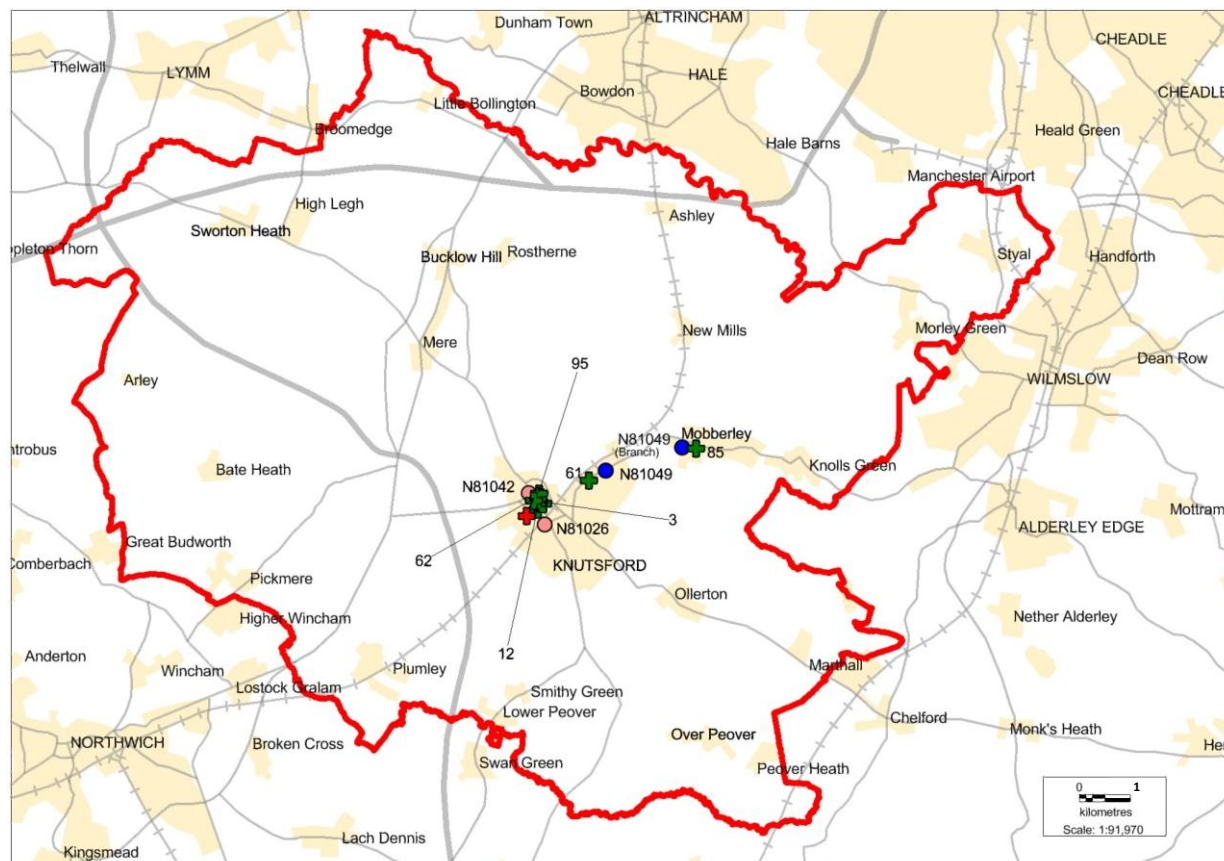
Overall satisfaction with services	Crewe LAP		Cheshire East	
	Count	%	Count	%
Very satisfied	56	50.9%	341	55.1%
Fairly satisfied	39	35.5%	204	33.0%
Neither satisfied nor dissatisfied	6	5.5%	41	6.6%
Fairly dissatisfied	7	6.4%	20	3.2%
Very dissatisfied	1	.9%	7	1.1%
Dont know	1	.9%	6	1.0%
Total	110	100.0%	619	100.0%

Use of the minor ailment service	Crewe LAP		Cheshire East	
	Count	%	Count	%
Have used	31	28.2%	184	29.8%
Haven't used, but might in future	40	36.4%	239	38.7%
Haven't used and dont intend to in future	33	30.0%	165	26.7%
Dont know	6	5.5%	29	4.7%
Total	110	100.0%	617	100.0%

Location and access to pharmacies	Crewe LAP		Cheshire East	
	Count	%	Count	%
Live in a rural area with access to a community pharmacy within the rural area	32	28.1%	139	21.7%
Live in a rural area with access to a pharmacy within a nearby town	17	14.9%	86	13.4%
Live in a rural area and can have my prescription dispensed by my doctors surgery	5	4.4%	34	5.3%
Live in a rural area and use an online pharmacy	0	0.0%	2	0.3%
I live in a urban area and access a Town based pharmacy	58	50.9%	365	56.9%
I live in a urban area and use an online pharmacy	0	0.0%	8	1.2%
I live in a urban area and access a rural based pharmacy	0	0.0%	2	0.3%
Not Applicable	2	1.8%	6	0.9%
Other	0	0.0%	0	0.0%
Total	114	100.0%	642	100.0%

CHESHIRE EAST PHARMACEUTICAL NEEDS ASSESSMENT 2015

LAP PROFILE: KNUTSFORD LAP



Opening Hours (Supplementary hours in bold; Core hours in brackets)

Map Code	Pharmacy Address	Monday	Tuesday	Wednesday	Thursday	Friday	Saturday	Sunday	100 hours
3	Boots 64 King Street Knutsford WA16 6DT	08:30-17:30 (09:30-13:00, 14:00-17:30)	08:30-17:30 (09:30-13:00, 14:00-17:30)	08:30-17:30 (09:30-13:00, 14:00-17:30)	08:30-17:30 (09:30-13:00, 14:00-17:30)	08:30-17:30 (09:30-13:00, 14:00-17:30)	08:30-17:30 (09:30-13:00, 14:00-15:30)	10:30-16:30 (No core hours)	No
12	Mannings 38 Princess Street Knutsford WA16 6BN	08:30-19:30 (09:00-13:00, 14:00-18:00)	08:30-19:30 (09:00-13:00, 14:00-18:00)	08:30-19:30 (09:00-13:00, 14:00-18:00)	08:30-19:30 (09:00-13:00, 14:00-18:00)	08:30-19:30 (09:00-13:00, 14:00-18:00)	09:00-17:30 (No core hours)	Closed	No
61	Rowlands Pharmacy 4 Parkgate Lane Knutsford WA16 8HG	09:00-13:00, 13:20-18:00 (09:00-13:00, 14:00-17:30)	09:00-13:00, 13:20-18:00 (09:00-13:00, 14:00-17:30)	09:00-13:00, 13:20-18:00 (09:00-13:00, 14:00-17:30)	09:00-13:00, 13:20-18:00 (09:00-13:00, 14:00-17:30)	09:00-13:00, 13:20-18:00 (09:00-13:00, 14:00-17:30)	09:00-12:00 (09:00-11:30)	Closed	No
62	Rowlands Pharmacy 6 Canute Place Knutsford WA16 6BH	09:00-13:00, 13:20-18:00 (09:00-13:00, 14:00-17:30)	09:00-13:00, 13:20-18:00 (09:00-13:00, 14:00-17:30)	09:00-13:00, 13:20-18:00 (09:00-13:00, 14:00-17:30)	09:00-13:00, 13:20-18:00 (09:00-13:00, 14:00-17:30)	09:00-13:00, 13:20-18:00 (09:00-13:00, 14:00-17:30)	09:00-13:00 (09:30-12:00)	Closed	No
85	The Co-Operative Pharmacy 93 Town Lane Mobberley, WA16 7HH	09:00-18:00 (09:00-14:00, 15:00-18:00)	09:00-18:00 (09:00-14:00, 15:00-18:00)	09:00-18:00 (09:00-14:00, 15:00-18:00)	09:00-18:00 (09:00-14:00, 15:00-18:00)	09:00-18:00 (09:00-14:00, 15:00-18:00)	Closed	Closed	No
95	The Prescription Service 11 Tatton Street Knutsford WA16 6AB	07:00-22:00	07:00-22:00	07:00-22:00	07:00-22:00	07:00-22:00	07:00-22:00	09:00-19:00	Yes

CHESHIRE EAST PHARMACEUTICAL NEEDS ASSESSMENT 2015

KNUTSFORD LAP: CCG and Public Health Commissioned Services

Map Code	Pharmacy	CCG Commissioned Services		Public Health Commissioned Services			
		PCS	MAS	SC	NE	SS	EHC
3	Boots, 64 King Street	Yes	Yes	Yes	No	No	Yes
12	Mannings, 38 Princess Street	No	No	No	No	No	No
61	Rowlands Pharmacy, 4 Parkgate Lane	No	Yes	Yes	No	No	No
62	Rowlands Pharmacy, 6 Canute Place	No	Yes	No	No	No	No
85	The Co-Operative Pharmacy, 93 Town Lane, Mobberley	No	Yes	No	Yes	Yes	Yes
95	The Prescription Service, 11 Tatton Street	Yes	Yes	Yes	No	No	Yes
PCS = Palliative Care Scheme; MAS = Minor Ailment Scheme; SC = Supervised Consumption; NE = Needle Exchange; SS = Stop Smoking; EHC = Emergency Hormonal Contraception							

KNUTSFORD LAP: Advanced Services

Map Code	Pharmacy	Dispense Appliances	MUR	New Med	AUR	SAC
3	Boots, 64 King Street	All types	Yes	Yes		
12	Mannings, 38 Princess Street	All types	Yes	Yes		Yes
61	Rowlands Pharmacy, 4 Parkgate Lane	All types	Yes	Yes		
62	Rowlands Pharmacy, 6 Canute Place	Excl incontinence appliances				
85	The Co-Operative Pharmacy, 93 Town Lane, Mobberley	All types	Yes	Yes		Yes
95	The Prescription Service, 11 Tatton Street	All types	Yes	Yes		Yes
MUR = Medicines Use Review; New Med = New Medicines Service; AUR = Appliance Review Service; SAC = Stoma Appliance Customisation						

KNUTSFORD LAP: Accessibility

Map Code	Pharmacy	DP	WA	WA All	AMS	AD/B	S	HL	LPL	CA	CAWA	T
3	Boots, 64 King Street		Yes	Yes	Yes	Yes	Yes	Yes	Yes	Yes	Yes	
12	Mannings, 38 Princess Street		Yes	Yes	Yes		Yes		Yes	Yes	Yes	Yes
61	Rowlands Pharmacy, 4 Parkgate Lane		Yes	Yes	Yes	Yes	Yes		Yes	Yes	Yes	
62	Rowlands Pharmacy, 6 Canute Place					Yes	Yes	Yes	Yes			
85	The Co-Operative Pharmacy, 93 Town Lane, Mobberley	Yes	Yes	Yes			Yes	Yes		Yes	Yes	
95	The Prescription Service, 11 Tatton Street		Yes	Yes	Yes	Yes	Yes		Yes	Yes	Yes	
DP = Designated disabled parking within 10m; WA = Entrance suitable for unaided wheelchair; WA all = All areas accessible by wheelchair; AMS = Accessible by mobility scooter users; S = Seating whilst waiting; HL = Hearing loop; LPL = Large print labels or leaflets; CA = Consultation area; CAWA = Consultation area accessible by wheelchair; T = Access to toilet during consultation												

KNUTSFORD LAP: General Practices

GP Practice Code	GP Practice Address	Surgery Type	Dispensing Practice	Responsible CCG
N81026	Toft Road Surgery, Toft Road, Knutsford, Cheshire, WA16 9DY	Main	No	NHS Eastern Cheshire CCG
N81042	Manchester Road Medical Centre, 27-29 Manchester Road, Knutsford, Cheshire, WA16 0LY	Main	No	NHS Eastern Cheshire CCG
N81049	Annandale Medical Centre, Mobberley Road, Knutsford, Cheshire, WA16 8HR	Main	No	NHS Eastern Cheshire CCG
N81049	Mobberley Surgery, Annandale Medical Centre, 99 Town Lane, Mobberley, Cheshire, WA16 7HH	Branch	Yes	NHS Eastern Cheshire CCG

CHESHIRE EAST PHARMACEUTICAL NEEDS ASSESSMENT 2015

Which pharmacy do you use?	Knutsford LAP		Cheshire East	
	Count	%	Count	%
I use the same pharmacy all the time	20	45.5%	241	37.6%
I use different pharmacies but visit one most often	18	40.9%	305	47.6%
I use different pharmacies and none more frequently than any other	6	13.6%	95	14.8%
Total	44	100.0%	641	100.0%

How do you travel to the pharmacy?	Knutsford LAP		Cheshire East	
	Count	%	Count	%
Car	27	61.4%	465	72.7%
Walk	22	50.0%	265	41.4%
Bike	6	13.6%	29	4.5%
Public transport	0	0.0%	11	1.7%
Delivered	1	2.3%	18	2.8%
Other	1	2.3%	8	1.3%
Total	44	100.0%	640	100.0%

How satisfied are you with the opening hours?	Knutsford LAP		Cheshire East	
	Count	%	Count	%
Very satisfied	18	40.9%	303	47.2%
Fairly satisfied	18	40.9%	202	31.5%
Neither satisfied nor dissatisfied	3	6.8%	80	12.5%
Fairly dissatisfied	0	0.0%	15	2.3%
Very dissatisfied	0	0.0%	4	0.6%
Dont know	5	11.4%	38	5.9%
Total	44	100.0%	642	100.0%

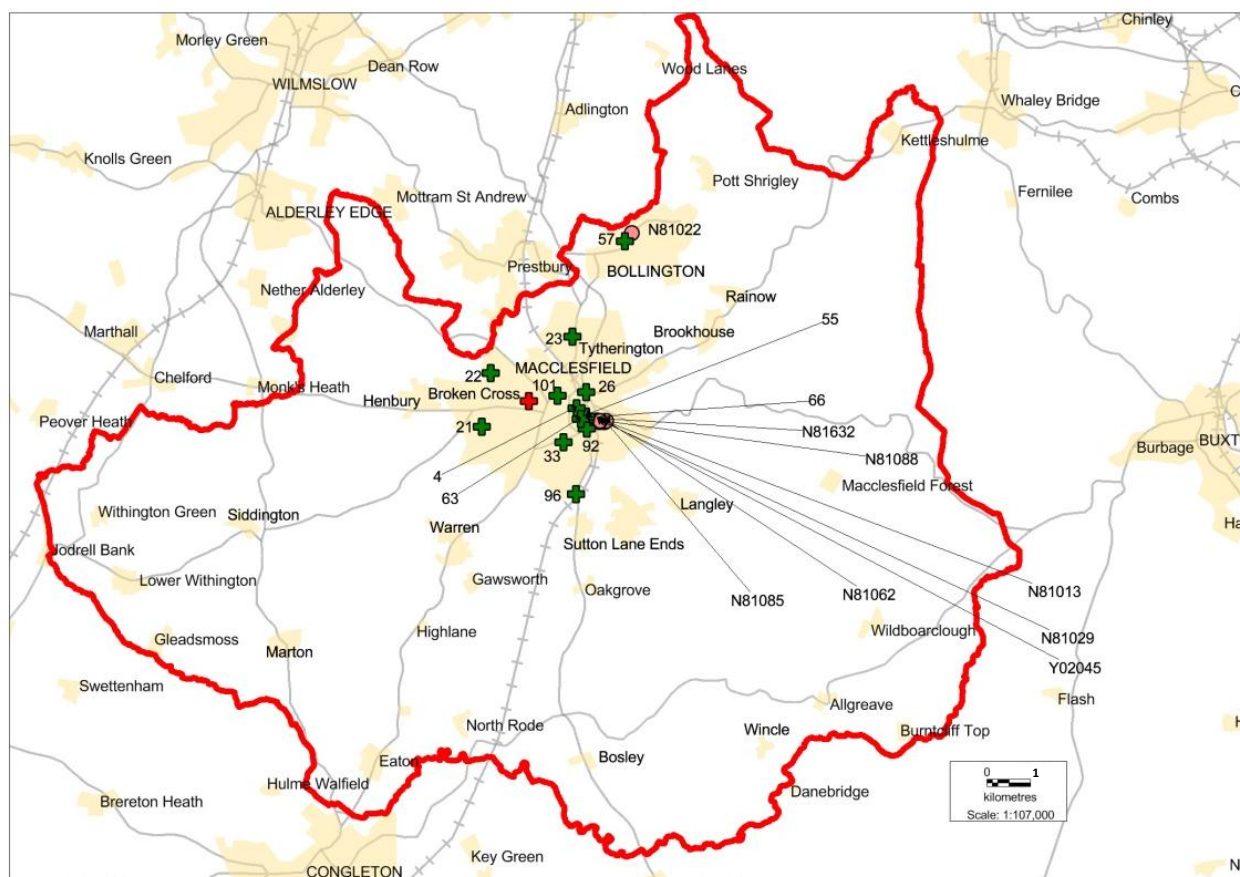
Overall satisfaction with services	Knutsford LAP		Cheshire East	
	Count	%	Count	%
Very satisfied	26	60.5%	341	55.1%
Fairly satisfied	16	37.2%	204	33.0%
Neither satisfied nor dissatisfied	1	2.3%	41	6.6%
Fairly dissatisfied	0	0.0%	20	3.2%
Very dissatisfied	0	0.0%	7	1.1%
Dont know	0	0.0%	6	1.0%
Total	43	100.0%	619	100.0%

Use of the minor ailment service	Knutsford LAP		Cheshire East	
	Count	%	Count	%
Have used	15	37.5%	184	29.8%
Haven't used, but might in future	16	40.0%	239	38.7%
Haven't used and dont intend to in future	6	15.0%	165	26.7%
Dont know	3	7.5%	29	4.7%
Total	40	100.0%	617	100.0%

Location and access to pharmacies	Knutsford LAP		Cheshire East	
	Count	%	Count	%
Live in a rural area with access to a community pharmacy within the rural area	6	13.6%	139	21.7%
Live in a rural area with access to a pharmacy within a nearby town	11	25.0%	86	13.4%
Live in a rural area and can have my prescription dispensed by my doctors surgery	6	13.6%	34	5.3%
Live in a rural area and use an online pharmacy	0	0.0%	2	0.3%
I live in a urban area and access a Town based pharmacy	20	45.5%	365	56.9%
I live in a urban area and use an online pharmacy	1	2.3%	8	1.2%
I live in a urban area and access a rural based pharmacy	0	0.0%	2	0.3%
Not Applicable	0	0.0%	6	0.9%
Other	0	0.0%	0	0.0%
Total	44	100.0%	642	100.0%

CHESHIRE EAST PHARMACEUTICAL NEEDS ASSESSMENT 2015

LAP PROFILE: MACCLESFIELD LAP



Opening Hours (Supplementary hours in bold; Core hours in brackets)

Map Code	Pharmacy Address	Monday	Tuesday	Wednesday	Thursday	Friday	Saturday	Sunday	100 hours
4	Boots 12 Mill Street Mall The Grosvenor Centre Macclesfield SK11 6AJ	09:00-17:30 (09:30-13:00, 14:00-17:15)	09:00-17:30 (09:30-13:00, 14:00-17:15)	09:00-17:30 (09:30-13:00, 14:00-17:15)	09:00-17:30 (09:30-13:00, 14:00-17:15)	09:00-17:30 (09:30-13:00, 14:00-17:15)	09:00-17:30 (09:30-13:00, 14:00-16:45)	11:00-16:00 (No core hours)	No
21	Weston Pharmacy 5-6 Weston Square Earlsway Macclesfield SK11 8SS	09:00-18:00 (09:00-13:00, 14:00-17:00)	09:00-18:00 (09:00-13:00, 14:00-17:00)	09:00-17:30 (09:00-13:00, 14:00-17:00)	09:00-18:00 (09:00-13:00, 14:00-17:00)	09:00-18:00 (09:00-13:00, 14:00-18:00)	09:00-17:30 (09:00-13:00)	Closed	No
22	Andrews Pharmacy 71 Kennedy Avenue Macclesfield SK10 3DE	09:00-13:00, 14:00-17:30 (09:00-13:00, 14:15-17:30)	09:00-13:00, 14:00-17:30 (09:00-13:00, 14:15-17:30)	09:00-13:00, 14:00-17:30 (09:00-13:00, 14:15-17:30)	09:00-13:00, 14:00-17:30 (09:00-13:00, 14:15-17:30)	09:00-13:00, 14:00-17:30 (09:00-13:00, 14:15-17:30)	09:00-12:30 (No core hours)	Closed	No
23	Tytherington Pharmacy 2-3 The Precinct Tytherington Macclesfield SK10 2HB	09:00-18:00 (09:00-13:00, 14:15-17:30)	09:00-18:00 (09:00-13:00, 14:15-17:30)	09:00-18:00 (09:00-13:00, 14:15-17:30)	09:00-18:00 (09:00-13:00, 14:15-17:30)	09:00-18:00 (09:00-13:00, 14:15-17:30)	09:00-18:00 (09:00-12:45)	Closed	No
26	Tesco Instore Pharmacy Hibel Road Macclesfield SK10 2AB	08:00-20:00 (09:00-13:00, 14:00-17:00)	08:00-20:00 (09:00-13:00, 14:00-17:00)	08:00-20:00 (09:00-13:00, 14:00-16:30)	08:00-20:00 (09:00-13:00, 14:00-16:30)	08:00-20:00 (09:00-13:00, 14:00-16:30)	08:00-20:00 (09:00-13:00, 14:00-16:30)	10:00-16:00 (No core hours)	No
33	The Co-Operative Pharmacy 209 Park Lane Macclesfield SK11 6UD	09:00-18:00 (09:00-12:30, 13:30-18:00)	09:00-18:00 (09:00-12:30, 13:30-18:00)	09:00-18:00 (09:00-12:30, 13:30-18:00)	09:00-18:00 (09:00-12:30, 13:30-18:00)	09:00-18:00 (09:00-12:30, 13:30-18:00)	Closed	Closed	No
55	The Co-Operative Pharmacy Bollin House Sunderland Street Macclesfield SK11 6JL	08:30-18:00 (09:00-13:00, 14:00-18:00)	08:30-18:00 (09:00-13:00, 14:00-18:00)	08:30-18:00 (09:00-13:00, 14:00-18:00)	08:30-18:00 (09:00-13:00, 14:00-18:00)	08:30-18:00 (09:00-13:00, 14:00-18:00)	Closed	Closed	No

CHESHIRE EAST PHARMACEUTICAL NEEDS ASSESSMENT 2015

57	Rowlands Pharmacy 71 Wellington Road Bollington Macclesfield SK10 5HT	09:00-13:20, 13:40-17:45 (09:00-13:00, 14:00-17:30)	09:00-13:20, 13:40-17:45 (09:00-13:00, 14:00-17:30)	09:00-13:20, 13:40-17:45 (09:00-13:00, 14:00-17:30)	09:00-13:20, 13:40-17:45 (09:00-13:00, 14:00-17:30)	09:00-13:20, 13:40-17:45 (09:00-13:00, 14:00-17:30)	09:00-13:00 (09:00-11:30)	Closed	No
63	Cohens Chemist Waters Green Medical Ctr Sunderland Street Macclesfield SK11 6JL	07:00-10:00 (07:00-22:00)	07:00-10:00 (07:00-22:00)	07:00-10:00 (07:00-22:00)	07:00-10:00 (07:00-22:00)	07:00-10:00 (07:00-22:00)	07:00-10:00 (07:00-22:00)	10:00-20:00	Yes
66	Lloyds Pharmacy 46-48 Charlotte Street Macclesfield SK11 6JB	08:00-22:30	08:00-22:30	08:00-22:30	08:00-22:30	08:00-22:30	08:00-22:30	09:30-22:30	Yes
92	The Co-Operative Pharmacy 78-80 Sunderland Street Macclesfield SK11 6HN	09:00-18:00 (09:00-13:00, 14:00-18:00)	09:00-18:00 (09:00-13:00, 14:00-18:00)	09:00-18:00 (09:00-13:00, 14:00-18:00)	09:00-18:00 (09:00-13:00, 14:00-18:00)	09:00-18:00 (09:00-13:00, 14:00-18:00)	09:00-13:00 (No core hours)	Closed	No
96	London Road Pharmacy Unit 1 157 London Road Macclesfield SK11 7SP	09:00-13:00, 14:00-17:30	09:00-13:00, 14:00-17:30	09:00-13:00, 14:00-17:30	09:00-13:00, 14:00-17:30	09:00-13:00, 14:00-17:30	09:00-12:30 (09:00-11:30)	Closed	No
101	Sainsbury's Pharmacy Macclesfield 61 Cumberland Street Macclesfield SK10 1BJ	08:00-23:00	07:00-23:00	07:00-23:00	07:00-23:00	07:00-23:00	07:00-22:00	10:00-16:00	Yes

MACCLESFIELD LAP: CCG and Public Health Commissioned Services

Map Code	Pharmacy	CCG Commissioned Services		Public Health Commissioned Services			
		PCS	MAS	SC	NE	SS	EHC
4	Boots, 12 Mill Street Mall	No	Yes	Yes	No	Yes	Yes
21	Weston Pharmacy, 5-6 Weston Square	Yes	Yes	Yes	Yes	Yes	Yes
22	Andrews Pharmacy, 71 Kennedy Avenue	No	Yes	Yes	Yes	Yes	Yes
23	Tytherington Pharmacy, 2-3 The Precinct, Tytherington	No	Yes	Yes	Yes	No	Yes
26	Tesco Instore Pharmacy, Hibell Road	Yes	Yes	Yes	No	Yes	Yes
33	The Co-Operative Pharmacy, 209 Park Lane	No	Yes	Yes	Yes	Yes	Yes
55	The Co-Operative Pharmacy, Bollin House	No	Yes	No	No	Yes	Yes
57	Rowlands Pharmacy, 71 Wellington Road, Bollington	No	Yes	No	No	Yes	Yes
63	Cohens Chemist, Waters Green Medical Ctr	Yes	Yes	Yes	No	Yes	Yes
66	Lloyds Pharmacy, 46-48 Charlotte Street	Yes	Yes	Yes	Yes	Yes	Yes
92	The Co-Operative Pharmacy, 78-80 Sunderland Street	No	Yes	Yes	Yes	Yes	Yes
96	London Road Pharmacy, Unit 1, 157 London Road	No	Yes	Yes	Yes	Yes	Yes
101	Sainsbury's Pharmacy Macclesfield, 61 Cumberland Street	Yes	Yes	No	No	No	No
PCS = Palliative Care Scheme; MAS = Minor Ailment Scheme; SC = Supervised Consumption; NE = Needle Exchange; SS = Stop Smoking; EHC = Emergency Hormonal Contraception							

MACCLESFIELD LAP: Advanced Services

Map Code	Pharmacy	Dispense Appliances	MUR	New Med	AUR	SAC
4	Boots, 12 Mill Street Mall	Just dressings	Yes	Yes		
21	Weston Pharmacy, 5-6 Weston Square	All types	Yes	Yes		
22	Andrews Pharmacy, 71 Kennedy Avenue	All types	Yes	Yes		
23	Tytherington Pharmacy, 2-3 The Precinct, Tytherington	All types	Yes	Yes		
26	Tesco Instore Pharmacy, Hibell Road	All types	Yes	Yes		
33	The Co-Operative Pharmacy, 209 Park Lane	All types	Yes	Yes		Yes
55	The Co-Operative Pharmacy, Bollin House	All types	Yes	Yes		Yes
57	Rowlands Pharmacy, 71 Wellington Road, Bollington					
63	Cohens Chemist, Waters Green Medical Ctr	All types	Yes	Yes		
66	Lloyds Pharmacy, 46-48 Charlotte Street	None	Yes	Yes		
92	The Co-Operative Pharmacy, 78-80 Sunderland Street	All types	Yes	Yes		Yes
96	London Road Pharmacy, Unit 1, 157 London Road	All types	Yes	Yes		
101	Sainsbury's Pharmacy Macclesfield, 61 Cumberland Street					
MUR = Medicines Use Review; New Med = New Medicines Service; AUR = Appliance Review Service; SAC = Stoma Appliance Customisation						

CHESHIRE EAST PHARMACEUTICAL NEEDS ASSESSMENT 2015

MACCLESFIELD LAP: Accessibility

Map Code	Pharmacy	DP	WA	WA All	AMS	AD/B	S	HL	LPL	CA	CAWA	T
4	Boots, 12 Mill Street Mall		Yes	Yes	Yes	Yes	Yes	Yes	Yes	Yes	Yes	
21	Weston Pharmacy, 5-6 Weston Square			Yes			Yes		Yes	Yes	Yes	
22	Andrews Pharmacy, 71 Kennedy Avenue	Yes	Yes	Yes	Yes	Yes	Yes		Yes	Yes	Yes	Yes
23	Tytherington Pharmacy, 2-3 The Precinct, Tytherington			Yes		Yes	Yes		Yes	Yes	Yes	
26	Tesco Instore Pharmacy, Hibel Road		Yes	Yes	Yes	Yes	Yes	Yes	Yes	Yes	Yes	Yes
33	The Co-Operative Pharmacy, 209 Park Lane	Yes	Yes	Yes			Yes	Yes		Yes	Yes	
55	The Co-Operative Pharmacy, Bollin House	Yes	Yes	Yes			Yes	Yes		Yes	Yes	Yes
57	Rowlands Pharmacy, 71 Wellington Road, Bollington											
63	Cohens Chemist, Waters Green Medical Centre	Yes	Yes	Yes	Yes	Yes	Yes	Yes	Yes	Yes	Yes	Yes
66	Lloyds Pharmacy, 46-48 Charlotte Street	Yes		Yes		Yes	Yes	Yes		Yes	Yes	
92	The Co-Operative Pharmacy, 78-80 Sunderland Street	Yes	Yes	Yes			Yes	Yes		Yes	Yes	
96	London Road Pharmacy, Unit 1, 157 London Road						Yes		Yes	Yes	Yes	
101	Sainsbury's Pharmacy Macclesfield, 61 Cumberland St											

DP = Designated disabled parking within 10m; WA = Entrance suitable for unaided wheelchair; WA all = All areas accessible by wheelchair; AMS = Accessible by mobility scooter users; S = Seating whilst waiting; HL = Hearing loop; LPL = Large print labels or leaflets; CA = Consultation area; CAWA = Consultation area accessible by wheelchair; T = Access to toilet during consultation

MACCLESFIELD LAP: General Practices

GP Practice Code	GP Practice Address	Surgery Type	Dispensing Practice	Responsible CCG
N81013	High Street Surgery, Waters Green Medical Ctr, Sunderland Street, Macclesfield, Cheshire, SK11 6JL	Main	No	NHS Eastern Cheshire CCG
N81022	Bollington Medical Centre, Wellington Road, Bollington, Cheshire, SK10 5JH	Main	No	NHS Eastern Cheshire CCG
N81029	South Park Surgery, Waters Green Medical Ctr, Sunderland Street, Macclesfield, Cheshire, SK11 6JL	Main	No	NHS Eastern Cheshire CCG
N81062	Cumberland House Surgery, Waters Green Medical Ctr, Sunderland Street, Macclesfield, Cheshire, SK11 6JL	Main	No	NHS Eastern Cheshire CCG
N81085	Park Lane House Medical Centre, Waters Green Medical Ctr, Sunderland Street, Macclesfield, Cheshire, SK11 6JL	Main	No	NHS Eastern Cheshire CCG
N81088	Park Green Surgery, Waters Green Medical Ctr, Sunderland Street, Macclesfield, Cheshire, SK11 6JL	Main	No	NHS Eastern Cheshire CCG
N81632	Broken Cross Surgery, Waters Green Medical Ctr, Sunderland Street, Macclesfield, Cheshire, SK11 6JL	Main	No	NHS Eastern Cheshire CCG
Y02045	Vernova Healthcare CIC, Waters Green Medical Ctr, Sunderland Street, Macclesfield, Cheshire, SK11 6JL	Main	No	NHS Eastern Cheshire CCG

CHESHIRE EAST PHARMACEUTICAL NEEDS ASSESSMENT 2015

Which pharmacy do you use?	Macclesfield LAP		Cheshire East	
	Count	%	Count	%
I use the same pharmacy all the time	43	33.1%	241	37.6%
I use different pharmacies but visit one most often	69	53.1%	305	47.6%
I use different pharmacies and none more frequently than any other	18	13.8%	95	14.8%
Total	130	100.0%	641	100.0%

How do you travel to the pharmacy?	Macclesfield LAP		Cheshire East	
	Count	%	Count	%
Car	100	77.5%	465	72.7%
Walk	46	35.7%	265	41.4%
Bike	5	3.9%	29	4.5%
Public transport	2	1.6%	11	1.7%
Delivered	2	1.6%	18	2.8%
Other	2	1.6%	8	1.3%
Total	129	100.0%	640	100.0%

How satisfied are you with the opening hours?	Macclesfield LAP		Cheshire East	
	Count	%	Count	%
Very satisfied	77	59.2%	303	47.2%
Fairly satisfied	32	24.6%	202	31.5%
Neither satisfied nor dissatisfied	15	11.5%	80	12.5%
Fairly dissatisfied	3	2.3%	15	2.3%
Very dissatisfied	0	0.0%	4	0.6%
Dont know	3	2.3%	38	5.9%
Total	130	100.0%	642	100.0%

Overall satisfaction with services	Macclesfield LAP		Cheshire East	
	Count	%	Count	%
Very satisfied	85	66.9%	341	55.1%
Fairly satisfied	32	25.2%	204	33.0%
Neither satisfied nor dissatisfied	9	7.1%	41	6.6%
Fairly dissatisfied	0	0.0%	20	3.2%
Very dissatisfied	0	0.0%	7	1.1%
Dont know	1	.8%	6	1.0%
Total	127	100.0%	619	100.0%

Use of the minor ailment service	Macclesfield LAP		Cheshire East	
	Count	%	Count	%
Have used	28	22.8%	184	29.8%
Haven't used, but might in future	51	41.5%	239	38.7%
Haven't used and dont intend to in future	41	33.3%	165	26.7%
Dont know	3	2.4%	29	4.7%
Total	123	100.0%	617	100.0%

Location and access to pharmacies	Macclesfield LAP		Cheshire East	
	Count	%	Count	%
Live in a rural area with access to a community pharmacy within the rural area	20	15.5%	139	21.7%
Live in a rural area with access to a pharmacy within a nearby town	15	11.6%	86	13.4%
Live in a rural area and can have my prescription dispensed by my doctors surgery	0	0.0%	34	5.3%
Live in a rural area and use an online pharmacy	1	0.8%	2	0.3%
I live in a urban area and access a Town based pharmacy	88	68.2%	365	56.9%
I live in a urban area and use an online pharmacy	3	2.3%	8	1.2%
I live in a urban area and access a rural based pharmacy	1	0.8%	2	0.3%
Not Applicable	1	0.8%	6	0.9%
Other	0	0.0%	0	0.0%
Total	129	100.0%	642	100.0%

LAP PROFILE: NANTWICH LAP

Page 59 of 70

CHESHIRE EAST PHARMACEUTICAL NEEDS ASSESSMENT 2015

NANTWICH LAP: CCG and Public Health Commissioned Services

Map Code	Pharmacy	CCG Commissioned Services		Public Health Commissioned Services			
		PCS	MAS	SC	NE	SS	EHC
5	Boots, 14 Swinemarket	No	Yes	Yes	Yes	No	Yes
60	Morrison's Pharmacy, Station Road	No	Yes	No	No	No	Yes
65	Sainsbury's Pharmacy, Middlewich Road	Yes	Yes	No	No	No	No
74	The Co-Operative Pharmacy, 10-16 High Street	No	Yes	No	No	Yes	Yes
78	The Co-Operative Pharmacy, Church View, Beam Street	No	Yes	No	No	Yes	Yes
79	The Co-Operative Pharmacy, 57 Beam Street	Yes	Yes	Yes	No	No	Yes
106	Boots, 1 Cheshire Street, Audlem	No	Yes	Yes	No	No	Yes

PCS = Palliative Care Scheme; MAS = Minor Ailment Scheme; SC = Supervised Consumption; NE = Needle Exchange; SS = Stop Smoking; EHC = Emergency Hormonal Contraception

NANTWICH LAP: Advanced Services

Map Code	Pharmacy	Dispense Appliances	MUR	New Med	AUR	SAC
5	Boots, 14 Swinemarket	All types	Yes	Yes		
60	Morrison's Pharmacy, Station Road	All types	Yes	Yes		
65	Sainsbury's Pharmacy, Middlewich Road	Just dressings	Yes	Yes		
74	The Co-Operative Pharmacy, 10-16 High Street	All types	Yes	Yes		Yes
78	The Co-Operative Pharmacy, Church View, Beam Street	All types	Yes	Yes		Yes
79	The Co-Operative Pharmacy, 57 Beam Street	All types	Yes	Yes		Yes
106	Boots, 1 Cheshire Street, Audlem	All types	Yes	Yes		

MUR = Medicines Use Review; New Med = New Medicines Service; AUR = Appliance Review Service; SAC = Stoma Appliance Customisation

NANTWICH LAP: Accessibility

Map Code	Pharmacy	DP	WA	WA All	AMS	AD/B	S	HL	LPL	CA	CAWA	T
5	Boots, 14 Swinemarket	Yes	Yes	Yes	Yes	Yes	Yes	Yes		Yes	Yes	
60	Morrison's Pharmacy, Station Road	Yes	Yes	Yes	Yes	Yes	Yes	Yes	Yes	Yes	Yes	Yes
65	Sainsbury's Pharmacy, Middlewich Road	Yes	Yes	Yes	Yes	Yes	Yes	Yes	Yes	Yes	Yes	Yes
74	The Co-Operative Pharmacy, 10-16 High Street	Yes	Yes				Yes	Yes		Yes		
78	The Co-Operative Pharmacy, Church View, Beam St	Yes	Yes	Yes			Yes	Yes		Yes	Yes	
79	The Co-Operative Pharmacy, 57 Beam Street	Yes	Yes	Yes			Yes	Yes		Yes	Yes	Yes
106	Boots, 1 Cheshire Street, Audlem			Yes		Yes	Yes	Yes	Yes	Yes	Yes	

DP = Designated disabled parking within 10m; WA = Entrance suitable for unaided wheelchair; WA all = All areas accessible by wheelchair; AMS = Accessible by mobility scooter users; S = Seating whilst waiting; HL = Hearing loop; LPL = Large print labels or leaflets; CA = Consultation area; CAWA = Consultation area accessible by wheelchair; T = Access to toilet during consultation

NANTWICH LAP: General Practices

GP Practice Code	GP Practice Address	Surgery Type	Dispensing Practice	Responsible CCG
N81001	Audlem Medical Practice, 16 Cheshire St, Audlem, Crewe, Cheshire, CW3 0AH	Main	No	NHS South Cheshire CCG
N81006	Bunbury Medical Practice, Bunbury, Tarporley, Cheshire, CW6 9PE	Main	Yes	NHS West Cheshire CCG
N81010	Nantwich Health Centre, Church View Primary Care Centre, Beam St., Nantwich, Cheshire, CW5 5NX	Main	No	NHS South Cheshire CCG
N81047	The Kiltarn Medical Ctr., Church View Primary Care Centre, Beam St., Nantwich, Cheshire, CW5 5NX	Main	No	NHS South Cheshire CCG
N81090	Tudor Surgery, Church View Primary Care Centre, Beam St, Nantwich, Cheshire, CW5 5NX	Main	No	NHS South Cheshire CCG
N81614	The Surgery, Nantwich Road, Wrenbury, Cheshire, CW5 8EW	Main	Yes	NHS South Cheshire CCG

CHESHIRE EAST PHARMACEUTICAL NEEDS ASSESSMENT 2015

Which pharmacy do you use?	Nantwich LAP		Cheshire East	
	Count	%	Count	%
I use the same pharmacy all the time	20	40.0%	241	37.6%
I use different pharmacies but visit one most often	19	38.0%	305	47.6%
I use different pharmacies and none more frequently than any other	11	22.0%	95	14.8%
Total	50	100.0%	641	100.0%

How do you travel to the pharmacy?	Nantwich LAP		Cheshire East	
	Count	%	Count	%
Car	39	78.0%	465	72.7%
Walk	13	26.0%	265	41.4%
Bike	0	0.0%	29	4.5%
Public transport	1	2.0%	11	1.7%
Delivered	1	2.0%	18	2.8%
Other	1	2.0%	8	1.3%
Total	50	100.0%	640	100.0%

How satisfied are you with the opening hours?	Nantwich LAP		Cheshire East	
	Count	%	Count	%
Very satisfied	23	46.0%	303	47.2%
Fairly satisfied	19	38.0%	202	31.5%
Neither satisfied nor dissatisfied	4	8.0%	80	12.5%
Fairly dissatisfied	2	4.0%	15	2.3%
Very dissatisfied	0	0.0%	4	0.6%
Dont know	2	4.0%	38	5.9%
Total	50	100.0%	642	100.0%

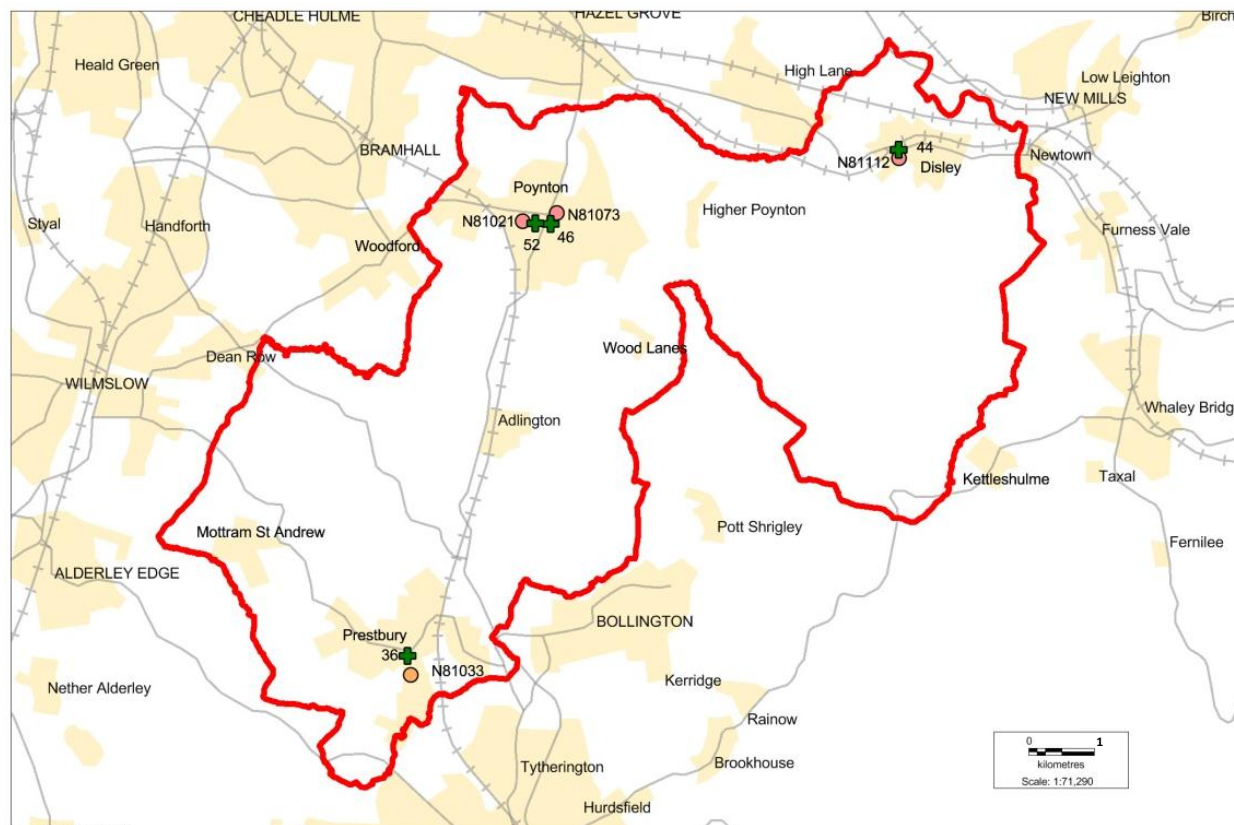
Overall satisfaction with services	Nantwich LAP		Cheshire East	
	Count	%	Count	%
Very satisfied	25	51.0%	341	55.1%
Fairly satisfied	13	26.5%	204	33.0%
Neither satisfied nor dissatisfied	7	14.3%	41	6.6%
Fairly dissatisfied	1	2.0%	20	3.2%
Very dissatisfied	1	2.0%	7	1.1%
Dont know	2	4.1%	6	1.0%
Total	49	100.0%	619	100.0%

Use of the minor ailment service	Nantwich LAP		Cheshire East	
	Count	%	Count	%
Have used	16	32.7%	184	29.8%
Haven't used, but might in future	16	32.7%	239	38.7%
Haven't used and dont intend to in future	13	26.5%	165	26.7%
Dont know	4	8.2%	29	4.7%
Total	49	100.0%	617	100.0%

Location and access to pharmacies	Nantwich LAP		Cheshire East	
	Count	%	Count	%
Live in a rural area with access to a community pharmacy within the rural area	7	13.5%	139	21.7%
Live in a rural area with access to a pharmacy within a nearby town	13	25.0%	86	13.4%
Live in a rural area and can have my prescription dispensed by my doctors surgery	8	15.4%	34	5.3%
Live in a rural area and use an online pharmacy	0	0.0%	2	0.3%
I live in a urban area and access a Town based pharmacy	22	42.3%	365	56.9%
I live in a urban area and use an online pharmacy	2	3.8%	8	1.2%
I live in a urban area and access a rural based pharmacy	0	0.0%	2	0.3%
Not Applicable	0	0.0%	6	0.9%
Other	0	0.0%	0	0.0%
Total	52	100.0%	642	100.0%

CHESHIRE EAST PHARMACEUTICAL NEEDS ASSESSMENT 2015

LAP PROFILE: POYNTON LAP



Opening Hours (Supplementary hours in bold; Core Hours in brackets)

Map Code	Pharmacy Address	Monday	Tuesday	Wednesday	Thursday	Friday	Saturday	Sunday	100 hours
36	The Village Pharmacy Unicorn House Prestbury SK10 4DG	09:00-17:30 (09:00-17:00)	09:00-17:30 (09:00-17:00)	09:00-17:30 (09:00-17:00)	09:00-18:00 (09:00-17:00)	09:00-17:30 (09:00-17:00)	09:00-13:00 (No core hours)	Closed	No
44	The Co-Operative Pharmacy 11 Fountain Square Disley SK12 2AB	09:00-18:00	09:00-18:00	09:00-13:00	09:00-18:00	09:00-18:00	09:00-13:00 (No core hours)	Closed	No
46	Rowlands Pharmacy 67 Park Lane Poynton SK12 1RD	09:00-13:00, 13:20-18:30 (09:00-13:00, 14:00-17:30)	09:00-13:00, 13:20-18:30 (09:00-13:00, 14:00-17:30)	09:00-13:00, 13:20-18:30 (09:00-13:00, 14:00-17:30)	09:00-13:00, 13:20-18:30 (09:00-13:00, 14:00-17:30)	09:00-13:00, 13:20-18:30 (09:00-13:00, 14:00-17:30)	09:00-13:00, 13:20-17:30 (09:00-11:30)	Closed	No
52	The Co-Operative Pharmacy 4 Park Lane Poynton SK12 1RE	08:30-18:30 (09:00-14:00, 15:00-18:00)	08:30-18:30 (09:00-14:00, 15:00-18:00)	08:30-18:30 (09:00-14:00, 15:00-18:00)	08:30-18:30 (09:00-14:00, 15:00-18:00)	08:30-18:30 (09:00-14:00, 15:00-18:00)	09:00-17:30 (No core hours)	Closed	No

POYNTON LAP: CCG and Public Health Commissioned Services

Map Code	Pharmacy	CCG Commissioned Services		Public Health Commissioned Services			
		PCS	MAS	SC	NE	SS	EHC
36	The Village Pharmacy, Unicorn House	Yes	Yes	Yes	No	Yes	Yes
44	The Co-Operative Pharmacy, 11 Fountain Square, Disley	Yes	Yes	Yes	Yes	No	No
46	Rowlands Pharmacy, 67 Park Lane	Yes	Yes	Yes	Yes	Yes	No
52	The Co-Operative Pharmacy, 4 Park Lane	No	Yes	No	Yes	No	No

PCS = Palliative Care Scheme; MAS = Minor Ailment Scheme; SC = Supervised Consumption; NE = Needle Exchange; SS = Stop Smoking; EHC = Emergency Hormonal Contraception

CHESHIRE EAST PHARMACEUTICAL NEEDS ASSESSMENT 2015

POYNTON LAP: Advanced Services

Map Code	Pharmacy	Dispense Appliances	MUR	New Med	AUR	SAC
36	The Village Pharmacy, Unicorn House	All types	Yes	Yes		
44	The Co-Operative Pharmacy, 11 Fountain Square, Disley	All types	Yes	Yes		Yes
46	Rowlands Pharmacy, 67 Park Lane	All types	Yes	Yes		Yes
52	The Co-Operative Pharmacy, 4 Park Lane		Yes	Yes		
MUR = Medicines Use Review; New Med = New Medicines Service; AUR = Appliance Review Service; SAC = Stoma Appliance Customisation						

POYNTON LAP: Accessibility

Map Code	Pharmacy	DP	WA	WA All	AMS	AD/B	S	HL	LPL	CA	CAWA	T
36	The Village Pharmacy, Unicorn House			Yes	Yes	Yes	Yes		Yes	Yes	Yes	Yes
44	The Co-Operative Pharmacy, 11 Fountain Square, Disley	Yes	Yes				Yes	Yes		Yes		
46	Rowlands Pharmacy, 67 Park Lane		Yes	Yes	Yes	Yes	Yes	Yes	Yes	Yes	Yes	
52	The Co-Operative Pharmacy, 4 Park Lane	Yes	Yes	Yes			Yes	Yes		Yes	Yes	
DP = Designated disabled parking within 10m; WA = Entrance suitable for unaided wheelchair; WA all = All areas accessible by wheelchair; AMS = Accessible by mobility scooter users; S = Seating whilst waiting; HL = Hearing loop; LPL = Large print labels or leaflets; CA = Consultation area; CAWA = Consultation area accessible by wheelchair; T = Access to toilet during consultation												

POYNTON LAP: General Practices

GP Practice Code	GP Practice Address	Surgery Type	Dispensing Practice	Responsible CCG
N81021	Mcllvride Medical Practice, The Chestnuts, 5 Chester Road, Poynton, Macclesfield, Cheshire, , SK12 1EU	Main	No	NHS Eastern Cheshire CCG
N81033*	Prestbury Surgery, Hope Cottage, Macclesfield Road, Prestbury, Macclesfield, SK10 4BW	Branch	No	NHS Eastern Cheshire CCG
N81073	Priorslegh Medical Centre, Civic Centre, Off Park Lane, Poynton, Cheshire, SK12 1GP	Main	No	NHS Eastern Cheshire CCG
N81112	The Schoolhouse Surgery, Buxton Old Road, Disley, Cheshire, SK12 2BB	Main	No	NHS Eastern Cheshire CCG

* Branch surgery of George Street (Alderley Edge) in Wilmslow LAP

CHESHIRE EAST PHARMACEUTICAL NEEDS ASSESSMENT 2015

Which pharmacy do you use?	Poynton LAP		Cheshire East	
	Count	%	Count	%
I use the same pharmacy all the time	22	45.8%	241	37.6%
I use different pharmacies but visit one most often	22	45.8%	305	47.6%
I use different pharmacies and none more frequently than any other	4	8.3%	95	14.8%
Total	48	100.0%	641	100.0%

How do you travel to the pharmacy?	Poynton LAP		Cheshire East	
	Count	%	Count	%
Car	30	62.5%	465	72.7%
Walk	27	56.3%	265	41.4%
Bike	4	8.3%	29	4.5%
Public transport	0	0.0%	11	1.7%
Delivered	1	2.1%	18	2.8%
Other	1	2.1%	8	1.3%
Total	48	100.0%	640	100.0%

How satisfied are you with the opening hours?	Poynton LAP		Cheshire East	
	Count	%	Count	%
Very satisfied	22	45.8%	303	47.2%
Fairly satisfied	14	29.2%	202	31.5%
Neither satisfied nor dissatisfied	8	16.7%	80	12.5%
Fairly dissatisfied	2	4.2%	15	2.3%
Very dissatisfied	1	2.1%	4	0.6%
Dont know	1	2.1%	38	5.9%
Total	48	100.0%	642	100.0%

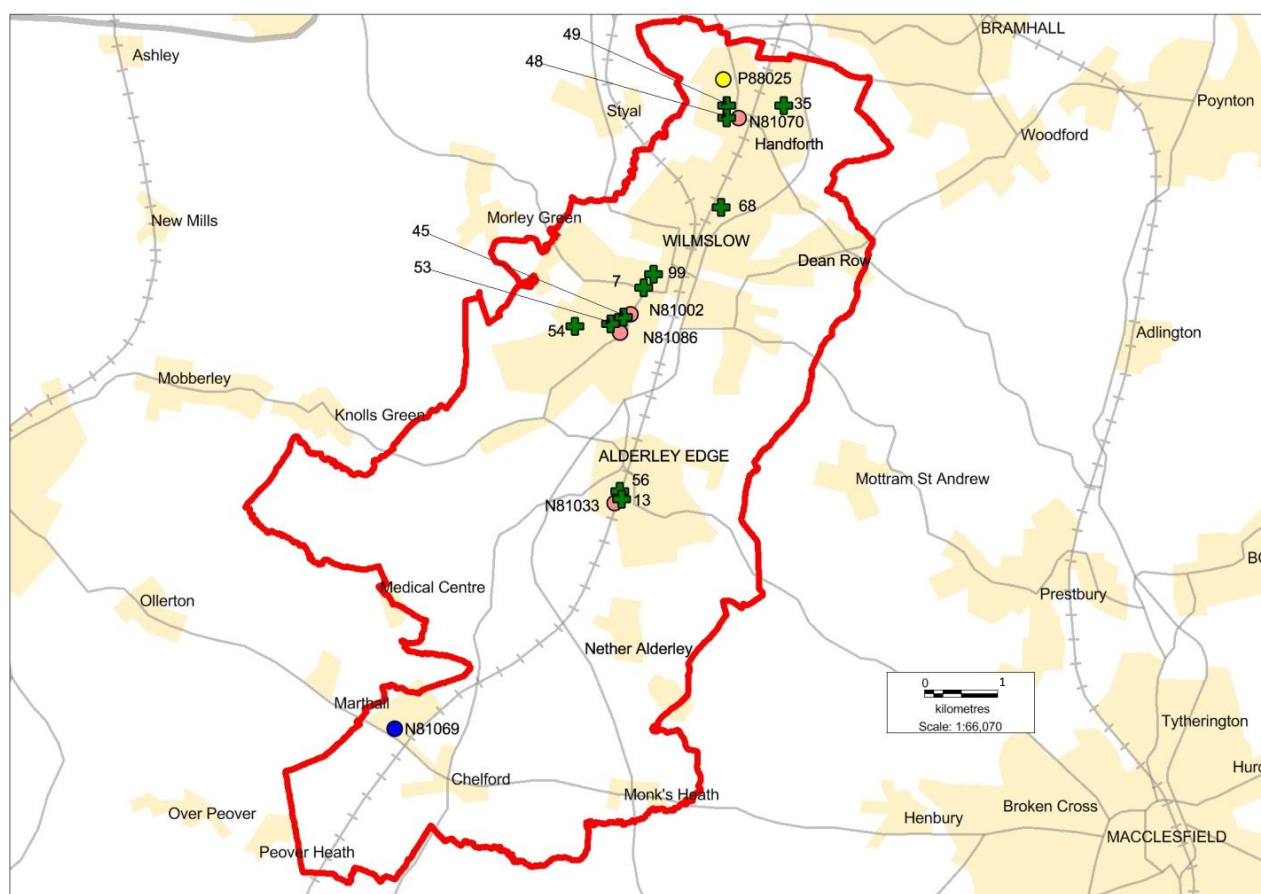
Overall satisfaction with services	Poynton LAP		Cheshire East	
	Count	%	Count	%
Very satisfied	26	57.8%	341	55.1%
Fairly satisfied	14	31.1%	204	33.0%
Neither satisfied nor dissatisfied	3	6.7%	41	6.6%
Fairly dissatisfied	1	2.2%	20	3.2%
Very dissatisfied	1	2.2%	7	1.1%
Dont know	0	0.0%	6	1.0%
Total	45	100.0%	619	100.0%

Use of the minor ailment service	Poynton LAP		Cheshire East	
	Count	%	Count	%
Have used	10	21.7%	184	29.8%
Haven't used, but might in future	22	47.8%	239	38.7%
Haven't used and dont intend to in future	12	26.1%	165	26.7%
Dont know	2	4.3%	29	4.7%
Total	46	100.0%	617	100.0%

Location and access to pharmacies	Poynton LAP		Cheshire East	
	Count	%	Count	%
Live in a rural area with access to a community pharmacy within the rural area	26	55.3%	139	21.7%
Live in a rural area with access to a pharmacy within a nearby town	7	14.9%	86	13.4%
Live in a rural area and can have my prescription dispensed by my doctors surgery	0	0.0%	34	5.3%
Live in a rural area and use an online pharmacy	0	0.0%	2	0.3%
I live in a urban area and access a Town based pharmacy	13	27.7%	365	56.9%
I live in a urban area and use an online pharmacy	0	0.0%	8	1.2%
I live in a urban area and access a rural based pharmacy	0	0.0%	2	0.3%
Not Applicable	1	2.1%	6	0.9%
Other	0	0.0%	0	0.0%
Total	47	100.0%	642	100.0%

CHESHIRE EAST PHARMACEUTICAL NEEDS ASSESSMENT 2015

LAP PROFILE: WILMSLOW LAP



Opening Hours (Supplementary hours in bold; Core Hours in brackets)

Map Code	Pharmacy Address	Monday	Tuesday	Wednesday	Thursday	Friday	Saturday	Sunday	100 hours
7	Boots 24-26 Grove Street Wilmslow SK9 1DY	09:00-17:30 (09:00-13:00, 14:00-17:00)	09:00-17:30 (09:00-13:00, 14:00-17:00)	09:00-17:30 (09:00-13:00, 14:00-17:00)	09:00-17:30 (09:00-13:00, 14:00-17:00)	09:00-17:30 (09:00-13:00, 14:00-17:00)	09:00-17:30 (09:00-13:00, 14:00-15:00)	11:00-16:00 (No core hours)	No
13	Cedrics Chemist 67 London Road Alderley Edge SK9 7DY	09:00-13:30, 14:30-17:30 (09:30-13:30, 14:30-17:30)	09:00-13:30, 14:30-17:30 (09:30-13:30, 14:30-17:30)	09:00-13:30, 14:30-17:30 (09:30-13:30, 14:30-17:30)	09:00-13:30, 14:30-17:30 (09:30-13:30, 14:30-17:30)	09:00-13:30, 14:30-17:30 (09:30-13:30, 14:30-17:30)	09:00-14:00	Closed	No
35	Tesco Instore Pharmacy Kiln Croft Lane Handforth SK9 3PA	09:00-21:00 (09:00-13:00, 14:00-16:40)	09:00-21:00 (09:00-13:00, 14:00-16:40)	09:00-21:00 (09:00-13:00, 14:00-16:40)	09:00-21:00 (09:00-13:00, 14:00-16:40)	09:00-21:00 (09:00-13:00, 14:00-16:40)	09:00-21:00 (09:00-13:00, 14:00-16:40)	10:00-16:00 (No core hours)	No
45	The Co-Operative Pharmacy Kenmore MC 60-62 Alderley Road Wilmslow SK9 1PA	08:30-18:30 (09:00-13:30, 14:30-18:00)	08:30-18:30 (09:00-13:30, 14:30-18:00)	08:30-18:30 (09:00-13:30, 14:30-18:00)	08:30-18:30 (09:00-13:30, 14:30-18:00)	08:30-18:30 (09:00-13:30, 14:30-18:00)	Closed	Closed	No
48	The Co-Operative Pharmacy Handforth HC Wilmslow Road Handforth SK9 3HL	08:30-18:00 (09:00-13:00, 14:00-18:00)	08:30-18:00 (09:00-13:00, 14:00-18:00)	08:30-18:00 (09:00-13:00, 14:00-18:00)	08:30-18:00 (09:00-13:00, 14:00-18:00)	08:30-18:00 (09:00-13:00, 14:00-18:00)	Closed	Closed	No
49	The Co-Operative Pharmacy 110 Wilmslow Road Handforth SK9 3ES	08:30-18:30 (09:00-13:00, 14:00-18:00)	08:30-18:30 (09:00-13:00, 14:00-18:00)	08:30-18:30 (09:00-13:00, 14:00-18:00)	08:30-18:30 (09:00-13:00, 14:00-18:00)	08:30-18:30 (09:00-13:00, 14:00-18:00)	09:00-13:00 (No core hours)	Closed	No
53	The Co-Operative Pharmacy Wilmslow HC Chapel Lane Wilmslow SK9 5HX	08:30-18:30 (09:00-13:00, 14:00-18:00)	08:30-18:30 (09:00-13:00, 14:00-18:00)	08:30-18:30 (09:00-13:00, 14:00-18:00)	08:30-18:30 (09:00-13:00, 14:00-18:00)	08:30-18:30 (09:00-13:00, 14:00-18:00)	09:00-12:00 (No core hours)	Closed	No

CHESHIRE EAST PHARMACEUTICAL NEEDS ASSESSMENT 2015

54	The Co-Operative Pharmacy 1 Lindow Parade Chapel Lane Wilmslow SK9 5JL	09:00-13:00, 14:00-18:00	09:00-13:00, 14:00-18:00	09:00-13:00, 14:00-18:00	09:00-13:00, 14:00-18:00	09:00-13:00, 14:00-18:00	Closed	Closed	No
56	Cedrics Chemist 20 London Road Alderley Edge SK9 7JS	09:00-12:30, 13:30-17:30 (09:00-12:30, 13:30-17:00)	09:00-12:30, 13:30-17:30	09:00-12:30, 13:30-17:30	09:00-12:30, 13:30-17:30	09:00-12:30, 13:30-17:30	09:00-13:00, 14:00-17:00 (14:00-17:00)	Closed	No
68	Lloyds Pharmacy Unit 2, Summerfield Village Centre Dean Row Road Wilmslow SK9 2TA	09:00-18:00 (09:00-14:00, 15:00-18:00)	09:00-18:00 (09:00-14:00, 15:00-18:00)	09:00-18:00 (09:00-14:00, 15:00-18:00)	09:00-18:00 (09:00-14:00, 15:00-18:00)	09:00-18:00 (09:00-14:00, 15:00-18:00)	09:00-17:00 (No core hours)	Closed	No
99	Boots Within Waitrose 5 Church Street Wilmslow SK9 1AY	08:30-20:00 (09:00-13:00, 14:00-17:00)	08:30-20:00 (09:00-13:00, 14:00-17:00)	08:30-20:00 (09:00-13:00, 14:00-17:00)	08:30-20:00 (09:00-13:00, 14:00-17:00)	08:30-21:00 (08:30-13:00, 14:00-17:30)	08:00-20:00 (09:00-13:00)	10:00-16:00 (No core hours)	No

WILMSLOW LAP: CCG and Public Health Commissioned Services

Map Code	Pharmacy	CCG Commissioned Services		Public Health Commissioned Services			
		PCS	MAS	SC	NE	SS	EHC
7	Boots, 24-26 Grove Street	No	Yes	Yes	No	No	Yes
13	Cedrics Chemist, 67 London Road, Alderley Edge	No	No	No	No	No	No
35	Tesco Instore Pharmacy, Kiln Croft Lane, Handforth	Yes	Yes	No	No	No	No
45	The Co-Operative Pharmacy, Kenmore Medical Centre	No	Yes	No	No	No	No
48	The Co-Operative Pharmacy, Handforth Health Centre	No	Yes	Yes	Yes	Yes	Yes
49	The Co-Operative Pharmacy, 110 Wilmslow Road	Yes	Yes	Yes	Yes	No	Yes
53	The Co-Operative Pharmacy, Wilmslow Health Centre	No	Yes	Yes	No	No	Yes
54	The Co-Operative Pharmacy, 1 Lindow Parade	No	Yes	No	No	Yes	No
56	Cedrics Chemist, 20 London Road, Alderley Edge	No	No	No	No	No	No
68	Lloyds Pharmacy, Unit 2, Summerfield Village Centre	No	Yes	Yes	Yes	No	Yes
99	Boots, Within Waitrose, Church Street	Yes	Yes	Yes	No	Yes	Yes

PCS = Palliative Care Scheme; MAS = Minor Ailment Scheme; SC = Supervised Consumption; NE = Needle Exchange; SS = Stop Smoking; EHC = Emergency Hormonal Contraception

WILMSLOW LAP: Advanced Services

Map Code	Pharmacy	Dispense Appliances	MUR	New Med	AUR	SAC
7	Boots, 24-26 Grove Street	All types	Yes	Yes		
13	Cedrics Chemist, 67 London Road, Alderley Edge	Just dressings				
35	Tesco Instore Pharmacy, Kiln Croft Lane, Handforth					
45	The Co-Operative Pharmacy, Kenmore Medical Centre	All types	Yes	Yes		Yes
48	The Co-Operative Pharmacy, Handforth Health Centre	All types	Yes	Yes		Yes
49	The Co-Operative Pharmacy, 110 Wilmslow Road	All types	Yes	Yes		Yes
53	The Co-Operative Pharmacy, Wilmslow Health Centre	All types	Yes	Yes		Yes
54	The Co-Operative Pharmacy, 1 Lindow Parade Alderley Edge	All types	Yes	Yes		Yes
56	Cedrics Chemist, 20 London Road, Alderley Edge	Just dressings				
68	Lloyds Pharmacy, Unit 2, Summerfield Village Centre	None	Yes	Yes		
99	Boots, within Waitrose, Church Street	All types	Yes	Yes		

MUR = Medicines Use Review; New Med = New Medicines Service; AUR = Appliance Review Service; SAC = Stoma Appliance Customisation

CHESHIRE EAST PHARMACEUTICAL NEEDS ASSESSMENT 2015

WILMSLOW LAP: Accessibility

Map Code	Pharmacy	DP	WA	WA All	AMS	AD/B	S	HL	LPL	CA	CAWA	T
7	Boots, 24-26 Grove Street	Yes	Yes	Yes	Yes	Yes	Yes	Yes	Yes	Yes	Yes	
13	Cedrics Chemist, 67 London Road, Alderley Edge		Yes	Yes	Yes	Yes	Yes		Yes	Yes	Yes	
35	Tesco Instore Pharmacy, Kiln Croft Lane, Handforth											
45	The Co-Operative Pharmacy, Kenmore Medical Centre	Yes	Yes	Yes			Yes	Yes		Yes	Yes	
48	The Co-Operative Pharmacy, Handforth Health Centre	Yes	Yes	Yes			Yes	Yes		Yes	Yes	
49	The Co-Operative Pharmacy, 110 Wilmslow Road	Yes	Yes	Yes			Yes	Yes		Yes	Yes	
53	The Co-Operative Pharmacy, Wilmslow Health Centre	Yes	Yes	Yes			Yes	Yes		Yes		Yes
54	The Co-Operative Pharmacy, 1 Lindow Parade	Yes	Yes				Yes	Yes		Yes		
56	Cedrics Chemist, 20 London Road, Alderley Edge			Yes	Yes	Yes	Yes		Yes	Yes	Yes	
68	Lloyds Pharmacy, Unit 2, Summerfield Village Centre	Yes	Yes	Yes	Yes	Yes	Yes	Yes		Yes	Yes	
99	Boots, within Waitrose, Church Street	Yes	Yes	Yes	Yes	Yes	Yes	Yes	Yes	Yes	Yes	Yes

DP = Designated disabled parking within 10m; WA = Entrance suitable for unaided wheelchair; WA all = All areas accessible by wheelchair; AMS = Accessible by mobility scooter users; S = Seating whilst waiting; HL = Hearing loop; LPL = Large print labels or leaflets; CA = Consultation area; CAWA = Consultation area accessible by wheelchair; T = Access to toilet during consultation

WILMSLOW LAP: General Practices

GP Practice Code	GP Practice Address	Surgery Type	Dispensing Practice	Responsible CCG
N81002	Kenmore Medical Centre, 60-62 Alderley Road, Wilmslow, Cheshire, SK9 1PA	Main	No	NHS Eastern Cheshire CCG
N81033	George Street Surgery, Alderley Edge, Cheshire, SK9 7EP	Main	No	NHS Eastern Cheshire CCG
N81069	Chelford Surgery, Elmstead Road, Chelford, Cheshire, SK11 9BS	Main	Yes	NHS Eastern Cheshire CCG
N81070	Handforth Health Centre, Wilmslow Road, Handforth, Cheshire, SK9 3HL	Main	No	NHS Eastern Cheshire CCG
N81086	Wilmslow Health Centre, Chapel Lane, Wilmslow, Cheshire, SK9 5HX	Main	No	NHS Eastern Cheshire CCG
P88025	Hulme Hall Medical Group – 166 Wilmslow Road, Handforth, Wilmslow, Cheshire, SK9 3LF	Branch	No	NHS Stockport CCG

CHESHIRE EAST PHARMACEUTICAL NEEDS ASSESSMENT 2015

Which pharmacy do you use?	Wilmslow LAP		Cheshire East	
	Count	%	Count	%
I use the same pharmacy all the time	27	39.1%	241	37.6%
I use different pharmacies but visit one most often	33	47.8%	305	47.6%
I use different pharmacies and none more frequently than any other	9	13.0%	95	14.8%
Total	69	100.0%	641	100.0%

How do you travel to the pharmacy?	Wilmslow LAP		Cheshire East	
	Count	%	Count	%
Car	49	71.0%	465	72.7%
Walk	28	40.6%	265	41.4%
Bike	2	2.9%	29	4.5%
Public transport	0	0.0%	11	1.7%
Delivered	2	2.9%	18	2.8%
Other	1	1.4%	8	1.3%
Total	69	100.0%	640	100.0%

How satisfied are you with the opening hours?	Wilmslow LAP		Cheshire East	
	Count	%	Count	%
Very satisfied	32	46.4%	303	47.2%
Fairly satisfied	22	31.9%	202	31.5%
Neither satisfied nor dissatisfied	10	14.5%	80	12.5%
Fairly dissatisfied	0	0.0%	15	2.3%
Very dissatisfied	2	2.9%	4	0.6%
Dont know	3	4.3%	38	5.9%
Total	69	100.0%	642	100.0%

Overall satisfaction with services	Wilmslow LAP		Cheshire East	
	Count	%	Count	%
Very satisfied	33	49.3%	341	55.1%
Fairly satisfied	27	40.3%	204	33.0%
Neither satisfied nor dissatisfied	4	6.0%	41	6.6%
Fairly dissatisfied	1	1.5%	20	3.2%
Very dissatisfied	2	3.0%	7	1.1%
Dont know	0	0.0%	6	1.0%
Total	67	100.0%	619	100.0%

Use of the minor ailment service	Wilmslow LAP		Cheshire East	
	Count	%	Count	%
Have used	19	28.8%	184	29.8%
Haven't used, but might in future	27	40.9%	239	38.7%
Haven't used and dont intend to in future	19	28.8%	165	26.7%
Dont know	1	1.5%	29	4.7%
Total	66	100.0%	617	100.0%

Location and access to pharmacies	Wilmslow LAP		Cheshire East	
	Count	%	Count	%
Live in a rural area with access to a community pharmacy within the rural area	15	22.1%	139	21.7%
Live in a rural area with access to a pharmacy within a nearby town	4	5.9%	86	13.4%
Live in a rural area and can have my prescription dispensed by my doctors surgery	2	2.9%	34	5.3%
Live in a rural area and use an online pharmacy	0	0.0%	2	0.3%
I live in a urban area and access a Town based pharmacy	44	64.7%	365	56.9%
I live in a urban area and use an online pharmacy	1	1.5%	8	1.2%
I live in a urban area and access a rural based pharmacy	0	0.0%	2	0.3%
Not Applicable	2	2.9%	6	0.9%
Other	0	0.0%	0	0.0%
Total	68	100.0%	642	100.0%

CHESHIRE EAST PHARMACEUTICAL NEEDS ASSESSMENT 2015

Glossary of terms and phrases defined in regulation 2 of the 2013 Regulations

Term or phrase	Definition as per regulation 2 of the 2012 Regulations	Explanation
Controlled localities/controlled locality	Means an area that is a controlled locality by virtue of regulation 36(1) or is determined to be so in accordance with regulation 36(2).	A controlled locality is an area which has been determined, either by NHS England, a primary care trust a predecessor organisation or on appeal by the NHS Litigation Authority (whose appeal unit handles appeals for pharmaceutical market entry and performance sanctions matters), to be “rural in character”. It should be noted that areas that have not been formally determined as rural in character and therefore controlled localities, are not controlled localities unless and until NHS England determines them to be. Such areas may be considered as rural because they consist of open fields with few houses but they are not a controlled locality until they have been subject to a formal determination.
Core opening hours	Is to be construed, as the context requires, in accordance with paragraph 23(2) of Schedule 4 or paragraph 13(2) of Schedule 5, or both.	Pharmacies are required to be open for 40 hours per week, unless they were approved under Regulation 13(1)(b) of the 2005 Regulations in which case they are required to open for 100 hours per week. Dispensing appliance contractors (DACs) are required to be open for not less than 30 hours per week.
Directed services	Means additional pharmaceutical services provided in accordance with directions under section 127 of the 2006 Act.	These are advanced and enhanced services as set out in Directions.
Dispensing doctor(s)	Is to be construed in accordance with regulation 46(1).	These are providers of primary medical services who provide pharmaceutical services from medical practice premises in the area of NHS England; and general practitioners who are not providers of primary medical services but who provide pharmaceutical services from medical practice premises in the area of the HWB.
Distance selling premises	Listed chemist premises, or potential pharmacy premises, at which essential services are or are to be provided but the means of providing those services are such that all persons receiving those services do so otherwise than at those premises.	These premises could have been approved under the 2005 Regulations in which case they could be pharmacies or DACs. Under the 2012 and 2013 Regulations only pharmacy contractors may apply to provide services from distance selling premises. Distance-selling contractors are in the main internet and some mail-order, but they all cannot provide “essential services” to persons face to face at their premises and must provide a service across England to anyone who requests it.
Enhanced services	Means the additional pharmaceutical services that are referred to in direction 4 of the Pharmaceutical Services (Advanced and Enhanced Services) (England) Directions 2013.	These are pharmaceutical services commissioned by NHS England, such as services to Care Homes, language access and patient group directions.
Essential services	Except in the context of the definition of “distance selling	These are services which every community pharmacy providing NHS pharmaceutical services must provide

CHESHIRE EAST PHARMACEUTICAL NEEDS ASSESSMENT 2015

	premises”, is to be construed in accordance with paragraph 3 of Schedule 4.	and is set out in their terms of service – these include the dispensing of medicines, promotion of healthy styles and support for self-care. Distance-selling pharmacy contractors cannot provide essential services face to face at their premises.
Neighbouring HWB	In relation to a HWB (HWB1), means the HWB of an area that borders any part of HWB1.	Used when, for example, an HWB is consulting on their draft PNA and needs to inform the HWBs which border their HWB area.
NHS chemist	Means an NHS appliance contractor or an NHS pharmacist.	

Key to pharmacies in neighbouring Health and Wellbeing Boards (shown in map on page 40)

Map Code	Pharmacy	Address				
200	Donald Wardle & Son	Ratton Street	Hanley	Stoke-On-Trent		ST1 2HH
201	Cedrics Chemist Ltd	262 Finney Lane	Heald Green	Cheadle	Cheshire	SK8 3QD
202	Fordbright Management Ltd	87 Macclesfield Road	Hazel Grove	Stockport		SK7 6BG
203	Boots Uk Limited	32 High Street		Cheadle	Cheshire	SK8 1AL
204	Tesco Stores Limited	Liverpool Road	Kidsgrove	Stoke-On-Trent		ST7 1DX
205	Boots Uk Limited	5-7 Dingle Walk	Winsford	Winsford	Cheshire	CW7 1BA
206	L Rowland & Co (Retail) Ltd	61 Arundel Avenue	Hazel Grove	Stockport		SK7 5LD
207	Cattee P & Aj (Chemists) Ltd	The Village Green	Buxton Road	High Lane	Stockport	SK6 8DR
208	Mr R Mason	147 Congleton Road	Butt Lane,Kidsgrove	Stoke On Trent		ST7 1LL
209	Ung Limited	Unit 3, 469 Manchester Rd	Lostock Gralam	Northwich	Cheshire	CW9 7QB
210	Malpapharm Ltd	28 Flixton Road	Urmston	Manchester		M41 5AA
211	Broadheath Healthcare Limited	70 Manchester Road	Broadheath	Altrincham	Cheshire	WA14 4PJ
212	Tesco Stores Limited	Tesco Superstore	Manchester Road	Northwich	Cheshire	CW9 5LY
213	Asda Stores Ltd	Dene Drive		Winsford	Cheshire	CW7 1BD
214	Lloyds Pharmacy Ltd	236 Wellington Road South		Stockport		SK2 6NW
215	Holland Pharmacy Ltd	Hollow Lane	Kingsley	Frodsham	Cheshire	WA6 8EF
216	Boots Uk Limited	39-45 Witton Street		Northwich	Cheshire	CW9 5DH
217	Bowdon Pharmacy	Vicarage Lane	Bowden	Cheshire		WA14 3BD
218	Co-Op Healthcare	40 Market Street	Whaley Bridge	High Peak	Derbyshire	SK23 7LP
219	Boots Uk Limited	55-57 Market Street	New Mills	High Peak	Derbyshire	SK22 4AA
220	Sainsbury's Supermarkets Ltd	Pharmacy Dept	Sainsbury's Supermarket	London Rd,Hazel Grove	Stockport	SK7 4AW
221	Boots Uk Limited	3-5 Upper Market Square	Hanley	Stoke-On-Trent		ST1 1PZ
222	Sainsbury's Supermarkets Ltd	Venables Road		Northwich	Cheshire	CW9 5RT
223	Sainsbury's Supermarkets Ltd	Wilmslow Road	Cheadle		Cheshire	SK8 3BB
224	United Pharmacies (Uk) Ltd	65-67 Clifton Drive	Leftwich	Northwich	Cheshire	CW9 8BQ
225	Lloyds Pharmacy Ltd	42 Market Street	Kidsgrove	Stoke-On-Trent		ST7 4AB